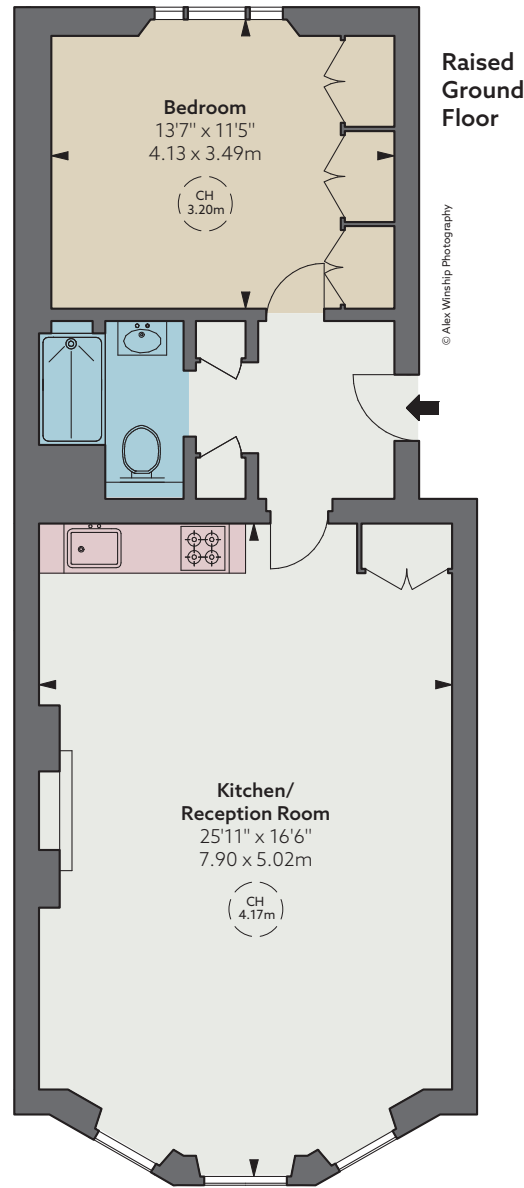




Cadogan Square

KNIGHTSBRIDGE SW1X 0HT



**Raised
Ground
Floor**

© Alex Winship Photography

A charming pied-à-terre located in one of the most prestigious squares in central London.

It is voluminous in appearance and has tranquil west-facing views towards the Square Garden. It spans the ground floor of a well-maintained red bricked building on the eastern terrace, equidistant from the retail hubs of Knightsbridge and Sloane Square.

Accommodation

- Bedroom
- Shower room
- Open-plan kitchen
- Reception room
- Lift
- Resident caretaker

Guide Price £1,350,000

Tenure Leasehold of approximately 125 years

Ground Rent Peppercorn

Service Charge £4,529 for year ending 28/09/23 (4.05% of outgoings)

Council Tax Band G

Local Authority The Royal Borough of Kensington & Chelsea

EPC Rating C

Approximate Gross Internal Area
673 sq ft / 62.52 sq m



THE
BROCHURE
ALEX
WINSHIP

These particulars are for general information only and do not constitute any part of an offer or contract. All statements contained therein are made without responsibility on the part of the vendors or lessors and are not to be relied upon as statement or representation of fact. Intending purchasers or lessees must satisfy themselves, by inspection, or otherwise, as to the correctness of each of the statements or dimensions contained in these particulars. This floorplan is for guidance only and not for valuation purposes. 23/08/23 JLL-230817-03GG

Floorplan for guidance only, not to scale or valuations purposes. It must not be relied upon as a statement of fact. All measurements and areas are approximate and have been prepared in accordance with the current edition of the RICS Code of Measuring Practice.

Savills Knightsbridge
knightsbridge_sales@savills.com
020 7581 5234

Savills Chelsea
chelsea@savills.com
020 7578 9000
savills.co.uk



JLL Knightsbridge
knightsbridge@eu.jll.com | 020 7306 1600
JLL Chelsea
chelsea@eu.jll.com | 020 7399 5010
jll.co.uk/residential