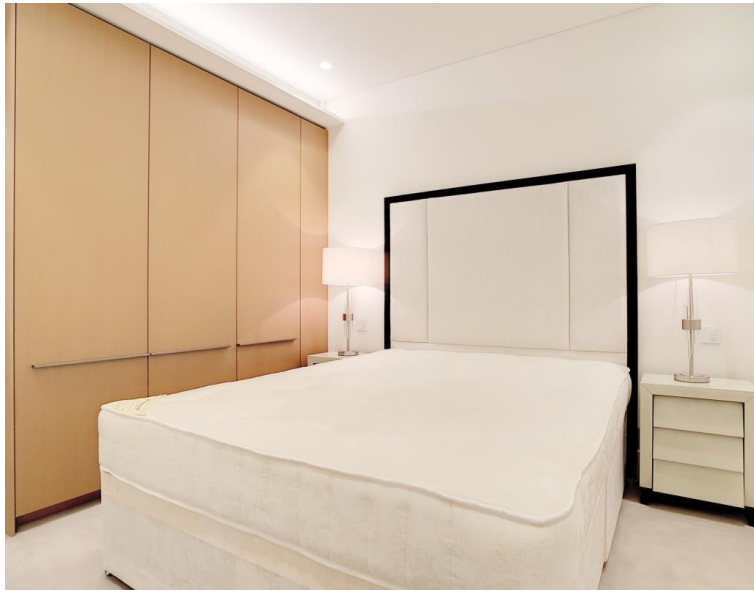


Rathbone Place, London W1T

Price £750 per week - Furnished







Description

This is a large studio apartment measuring over 43sqm / 463sqft with an open-plan kitchen and reception room leading out to the private balcony, a separate sleeping area and a modern bathroom suite. The apartment is furnished and has wooden flooring throughout.

Residents will benefit from access to a 24-hour concierge, gym, pool, sauna and steam room, cinema room, residents' lounge, wine storage and tasting room and beautiful gardens.

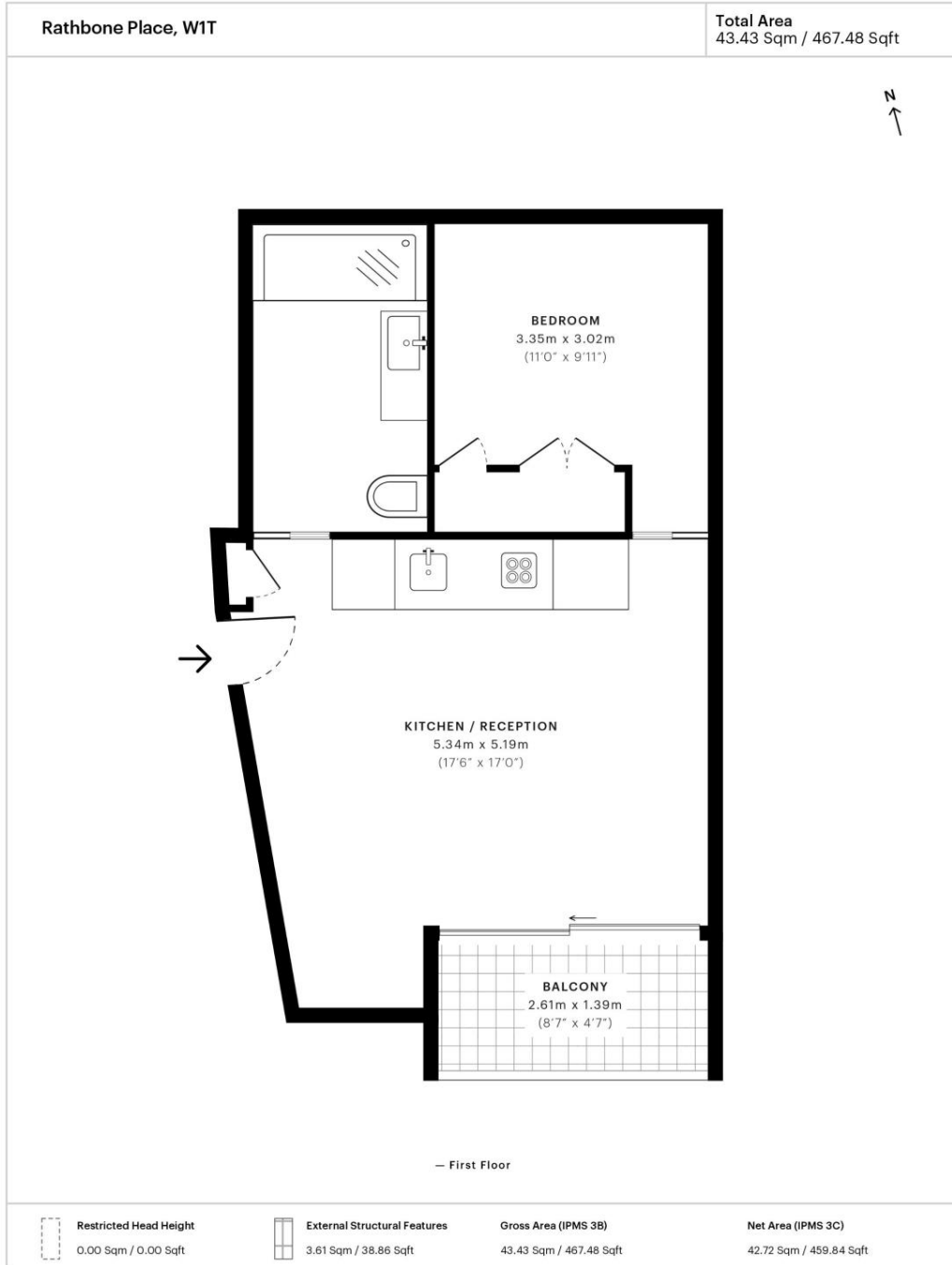
Rathbone Square has been designed to offer a tranquil environment, whilst being ideally located moments from Oxford Street. Situated in the heart of London's West End, ideal for transport links in and around London, with The City and West London being just ten minutes away via the underground.

As well as paying the rent, you may also be required to make any applicable permitted payments. If your tenancy does not qualify as an AST, additional fees may apply. Please visit jll.co.uk/fees for details of fees which may be payable when renting a property.

- Large Studio Apartment
- Separate Sleeping Area
- Private Balcony
- Over 43sq m / 463sqft
- 24hr Concierge
- Gym
- Pool
- Sauna & Steam Room
- Cinema Room

Floorplan

477 sq ft | 44 sq m



Spec floor plan captured for JLL, Knightsbridge on 17/09/2018 using 28,231,618 laser scan points, accurate to +/- 3cm. Produced in accordance with Royal Institution of Chartered Surveyors Property Measurement Standards, incorporating International Property Measurement Standard (IPMS). If you intend to rely on any measurement in a transaction you should perform your own checks. Plot/Gardens illustrative only and excluded from all area calculations. SpecID: 5b97ca74e4f4473b5fe497ae

Restricted Head Height = Limited use area under 1.5m. **External Structural Features** = Balconies, terraces or verandas or similar. **IPMS 3B** = gross internal area measured from the internal faces of external walls, including walls/obstructions and External Structural Features, excluding stairwell area above/below the ground floor. **IPMS 3C** = net area of IPMS 3B excluding internal walls/obstructions and stairwell area above/below the ground floor. **Total Area** = IPMS 3B gross area + stairwell area above/below ground floor of 0.00 Sqm / 0.00 Sqft.



Mayfair and Marylebone
13a St George Street,
London W1S 2FQ
+44 207 399 5550
mayfair@jll.com

Urban living, your way.

jll.co.uk/residential

© 2019 Jones Lang LaSalle IP, Inc. All rights reserved. All information contained herein is from sources deemed reliable; however, no representation or warranty is made to the accuracy thereof.

