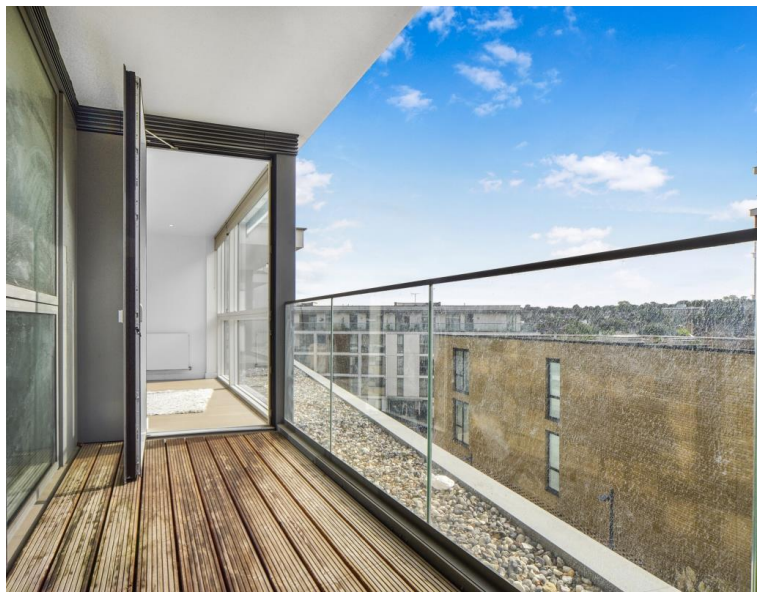




## River Gardens Walk, London SE10

Price £2,400 per month - Part Furnished,  
Unfurnished









## Description

This is a luxurious, two bedroom apartment with allocated parking on the 2nd floor. The apartment is finished to a superb standard and located in The River Gardens development. The property is just a short river walk from the Cutty Sark DLR and Maze Hill mainline station for an easy commute to the City and Canary Wharf.

The property comprises of a large living room and balcony, allowing for a impressive view and a light and airy feel throughout, a modern, open plan kitchen with integrated appliances. Spacious master bedroom with high quality carpet, built in wardrobe, en-suite bathroom and second double bedroom and shower room. The property also benefits a 24 hour concierge, allocated parking, swimming pool and gym. The property is offered unfurnished or part-furnished and is available immediately.

As well as paying the rent, you may also be required to make the following permitted payments. If your tenancy does not qualify as an AST, additional fees may apply. Please visit [jll.co.uk/fees](http://jll.co.uk/fees) for details of fees which may be payable when renting a property.

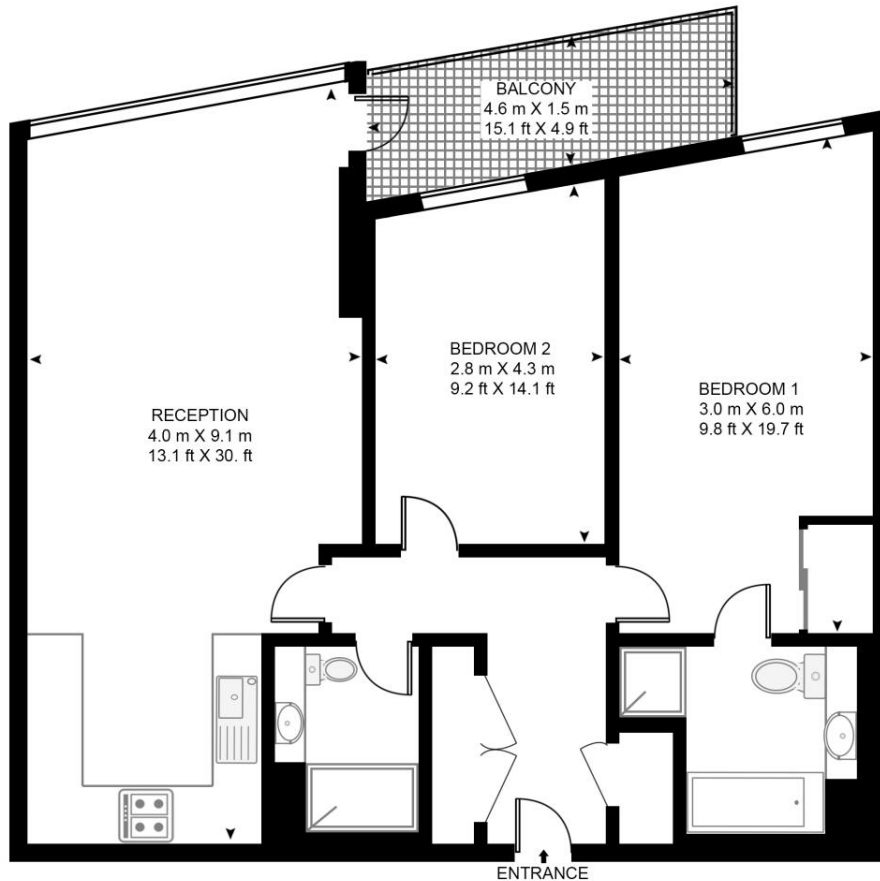
- 2 Bedrooms
- 2 Bathrooms
- Second Floor
- Secure allocated parking, pool and gym
- 24 hour concierge
- Short walk to the Cutty Sark DLR
- Unfurnished or part furnished
- EPC: B

# Floorplan

sq ft | sq m

## WYNDHAM APARTMENTS

APPROXIMATE GROSS INTERNAL FLOOR AREA 893 SQ.FT (83 SQ.M)



### SECOND FLOOR



This floor plan has been defined by the RICS Code of Measurement. This floor plan and all others are for approximate representative purposes only and upon usage is agreed to as such by the client.  
WWW: [hdvirtualart.com](http://hdvirtualart.com) | TEL: 0203.974.1567 | EMAIL: [info@hdvirtualart.com](mailto:info@hdvirtualart.com)

Greenwich  
22 College Approach,  
London SE10 9HY  
02088589986  
[lettingsgreenwich@eu.jll.com](mailto:lettingsgreenwich@eu.jll.com)

*Urban living, your way.*

[jll.co.uk/residential](http://jll.co.uk/residential)

© 2019 Jones Lang LaSalle IP, Inc. All rights reserved. All information contained herein is from sources deemed reliable; however, no representation or warranty is made to the accuracy thereof.

