



Albion Court, Azof Street, Greenwich, London SE10 0EP



Albion Court, Azof Street, Greenwich, SE10

Share of Freehold

A light and spacious two bedroom, two bathroom duplex apartment occupying top two floors of this purpose built development.

Key Features

- 2 Double bedrooms
- 2 Bathrooms (1 x en-suite)
- Duplex apartment
- Arranged over two floors
- Far reaching views
- Walk to Central Greenwich
- Close to Greenwich Park
- EPC: B

The accommodation which has been modernised to a high standard comprises open plan kitchen / reception room with stairs leading down to two double bedrooms, master with built in wardrobes and en-suite shower room, and a separate family bathroom.

Albion Court is situated in Azof Street, which is a residential area in Greenwich, close to North Greenwich, Jubilee Line underground station and the same distance to Maze Hill mainline station, with Greenwich Royal Park.

The property also benefits from share of freehold & no onward chain.



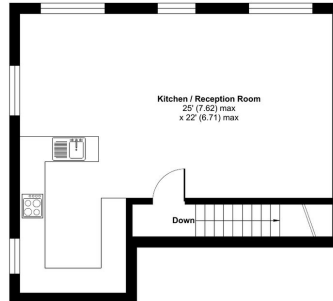




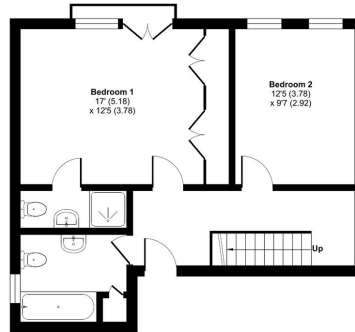


Albion Court, Azof Street, London, SE10

Approximate Area = 1028 sq ft / 95.5 sq m
For identification only - Not to scale



THIRD FLOOR



SECOND FLOOR



Floor plan produced in accordance with RICS Property Measurement Standards incorporating International Property Measurement Standards (IPMS: Residential). ©nebhom 2023. Produced for JLL Residential. REF: 1037408

22 College Approach,
Greenwich, SE10 9HY

Sales, Lettings & Property Management

Tel: 020 8858 9986

residential.jll.co.uk

