



# Michael Road, London SW6

Price £1,000 per week - Unfurnished







## Description

This beautiful two-bedroom apartment is one of the biggest two bedroom apartments of this newly launched King's Road Park development. The flat includes two spacious bedrooms, with one en-suite bathroom and one family sized bathroom.

It further comprises of a stunning open plan kitchen and living room with a spacious balcony overlooking the beautiful communal gardens. The development is set within six acres of beautiful landscaping including a public park, square and residents' garden and one of best residents facilities around.

Kings Road Park is within easy reach of Fulham Broadway Underground station (15 minutes to Victoria on the District Line), and Imperial Wharf Overground station, taking you one stop to Clapham Junction south of the river.

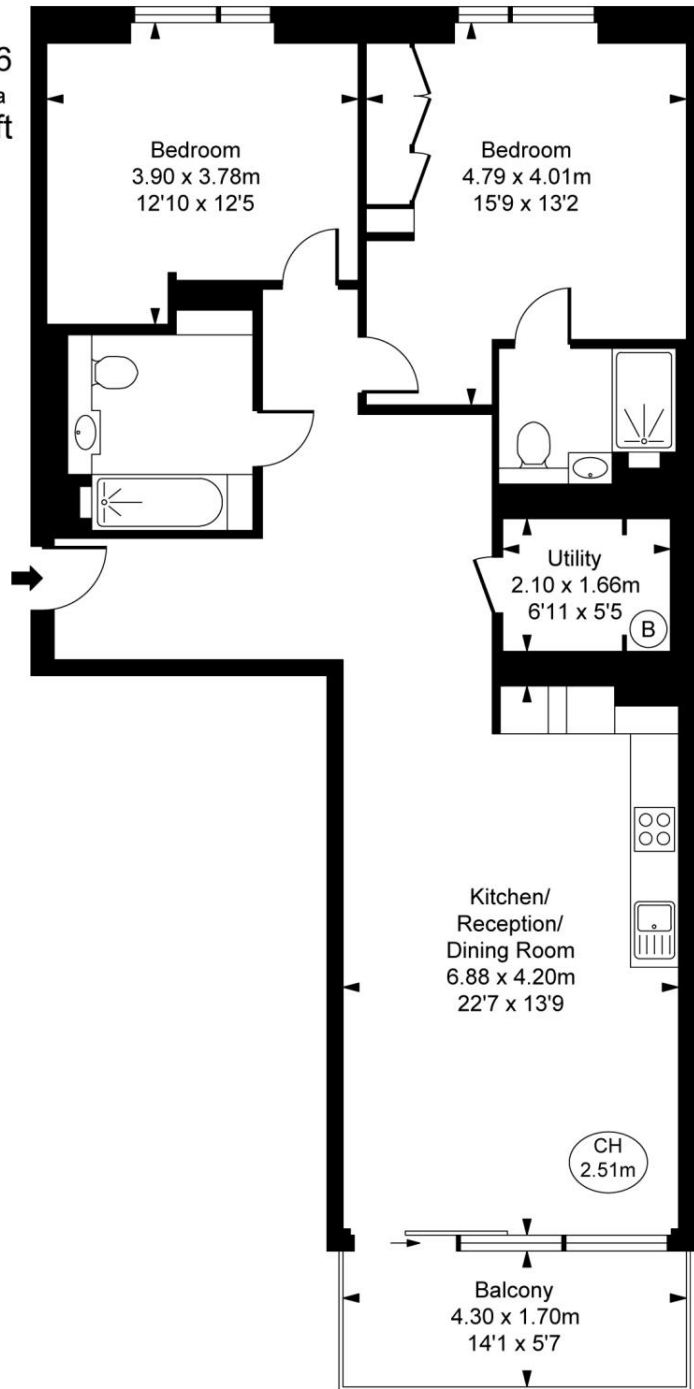
As well as paying the rent, you may also be required to make some additional permitted payments. If your tenancy does not qualify as an AST, additional fees may apply. Please visit [jll.co.uk/fees](http://jll.co.uk/fees) for details of fees which may be payable when renting a property.

- 25m swimming pool
- Vitality pool
- Steam and sauna rooms
- Golf simulator
- Games room
- Gymnasium
- Fitness studios
- Treatment rooms
- 24 hour concierge
- Private dining room

# Floorplan

sq ft | sq m

Hampton House,  
Sands End Lane, SW6  
Approximate Gross Internal Area  
92.26 sq m / 993 sq ft  
( CH = Ceiling Heights )



This plan is not to scale. It is for guidance and not for valuation purposes.  
All measurements and areas are approximate only, and have been prepared in accordance with the current edition of the RICS Code of Measuring Practice.  
© Fulham Performance

Chelsea  
2 Cale Street,  
London SW3 3QU  
+4420 7399 5010  
lettingschelsea@eu.jll.com

*Urban living, your way.*

[jll.co.uk/residential](http://jll.co.uk/residential)

© 2019 Jones Lang LaSalle IP, Inc. All rights reserved. All information contained herein is from sources deemed reliable; however, no representation or warranty is made to the accuracy thereof.

