



**CLIPPER APARTMENTS, WELLAND STREET,
GREENWICH SE10**





This is a fantastic two bedroom apartment forming part of this modern development in the prime location of central Greenwich, just a moment's walk from the Cutty Sark DLR.

The accommodation comprises a fully fitted kitchen opening onto a reception room with wood flooring which leads onto a sunny decked balcony with amazing far reaching views, double bedroom with fitted wardrobes, a second bedroom/study and a family bathroom.

The property is beautifully presented throughout and no onward chain.

Early viewings are highly recommended.

- 2 Double bedrooms
- 1 Bathroom
- Decked balcony
- Far reaching views
- 4th Floor
- Beautifully presented throughout
- Residents parking permit
- Walk to Cutty Sark DLR
- Central Greenwich location
- Leasehold (105 years)
- No onward chain
- EPC: C

PRICE
£550,000

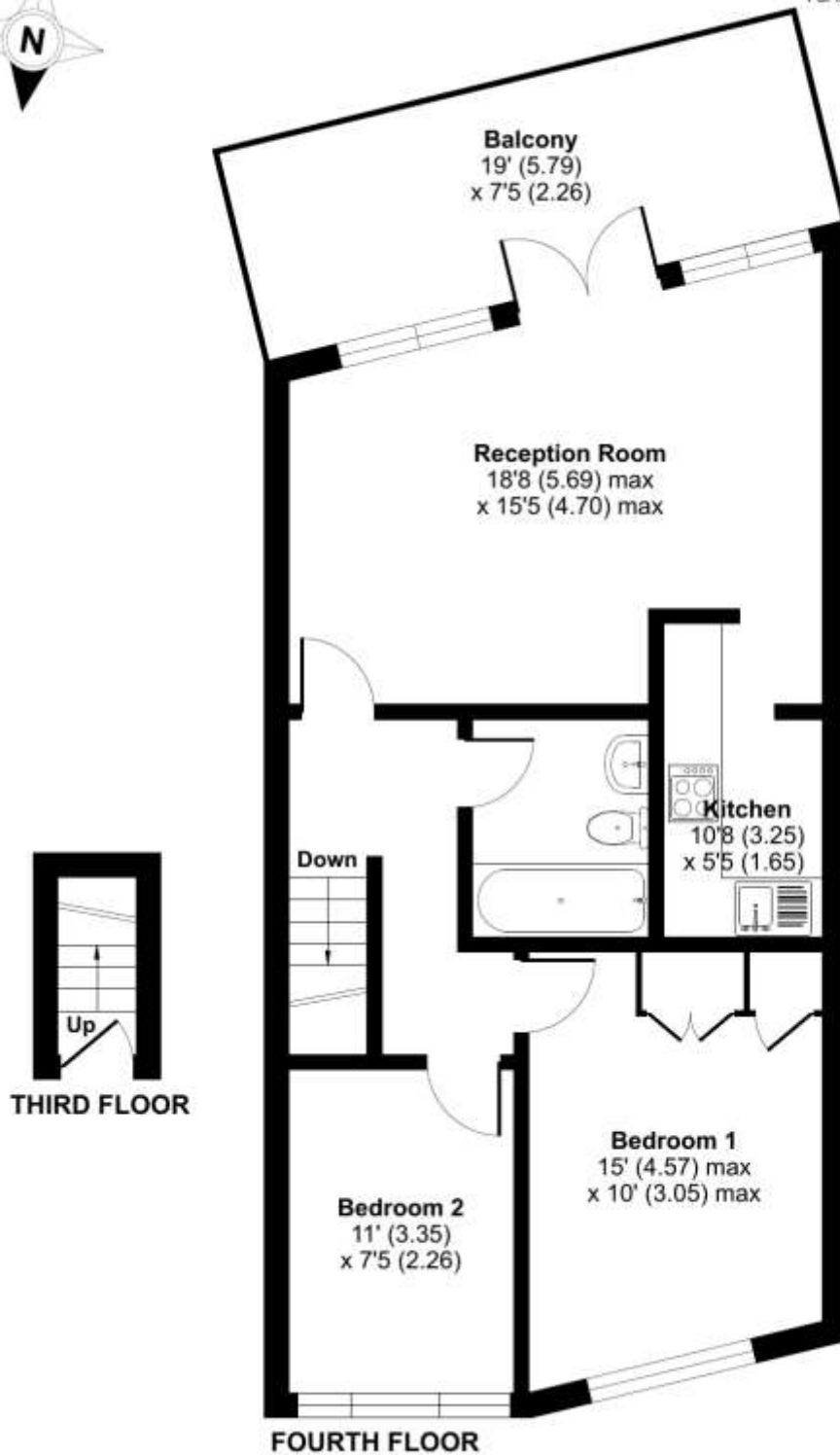
GROSS INTERNAL AREA
653 sq ft (60.6 sq m)

LOCAL AUTHORITY
Royal Borough of Greenwich

Welland Street, London, SE10

Approximate Area = 653 sq ft / 60.6 sq m

For identification only - Not to scale



Floor plan produced in accordance with RICS Property Measurement Standards incorporating International Property Measurement Standards (IPMS2 Residential). © richcom 2023. Produced for JLL Residential. REF: 1037412

22 College Approach
Greenwich
London
SE10 9HY

These particulars are for general information only and do not constitute any part of an offer or contract. All statements contained therein are made without responsibility on the part of the vendors or lessors and are not to be relied upon as statement or representation of fact. Intending purchasers or lessees must satisfy themselves, by inspection, or otherwise, as to the correctness of each of the statements or dimensions contained in these particulars..