



**Southwark Bridge Road, London SE1**  
Price £595 per week - Furnished







## Description

A sought after 1 bedroom apartment in Elephant & Castle's latest tower, Two Fifty One (251).

This luxury 1 bedroom apartment offers approximately 539 Sq ft of living space and is situated on the 17th floor. The property comprises large open plan reception with fully fitted kitchen, double bedroom with large fitted wardrobes, contemporary bathroom, wood flooring and good storage space.

Two Fifty One (251) is located in the heart of Southwark, zone 1 and well situated for the City of London with Elephant & Castle station just 0.1 miles away. Residents also benefit from 24 hour concierge, on site gymnasium, private cinema and private club / dining areas.

As well as paying the rent, you may also be required to make the following permitted payments. If your tenancy does not qualify as an AST, additional fees may apply. Please visit [jll.co.uk/fees](http://jll.co.uk/fees) for details of fees which may be payable when renting a property.

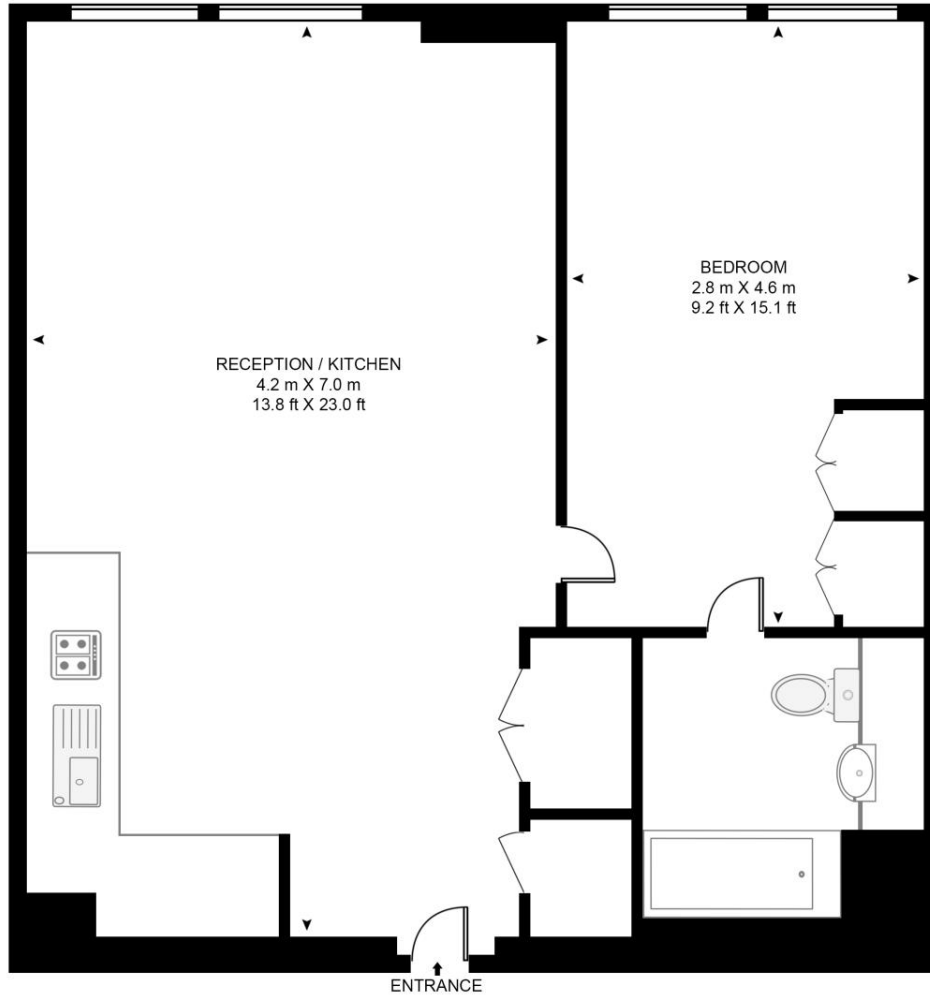
- 1 Bedroom
- 1 Bathroom
- 17th Floor
- 24 Hour concierge
- Residents gym
- Residents cinema
- 0.1 miles from Elephant & Castle station
- Approx 539 sq ft
- Furnished
- EPC: B

# Floorplan

539 sq ft | 50 sq m

## TWO FIFTY ONE

APPROXIMATE GROSS INTERNAL FLOOR AREA 539 SQ.FT (50.1 SQ.M)



## SEVENTEENTH FLOOR



This floor plan has been defined by the RICS Code of Measurement. This floor plan and all others are for approximate representative purposes only and upon usage is agreed to as such by the client.  
WWW: [hdvirtualart.com](http://hdvirtualart.com) | TEL: 0203.974.1567 | EMAIL: [info@hdvirtualart.com](mailto:info@hdvirtualart.com)

City  
25 Walbrook The Walbrook  
Building,  
London EC4N 8AF  
+4420 7337 4000

*Urban living, your way.*

[jll.co.uk/residential](http://jll.co.uk/residential)

© 2019 Jones Lang LaSalle IP, Inc. All rights reserved. All information contained herein is from sources deemed reliable; however, no representation or warranty is made to the accuracy thereof.

