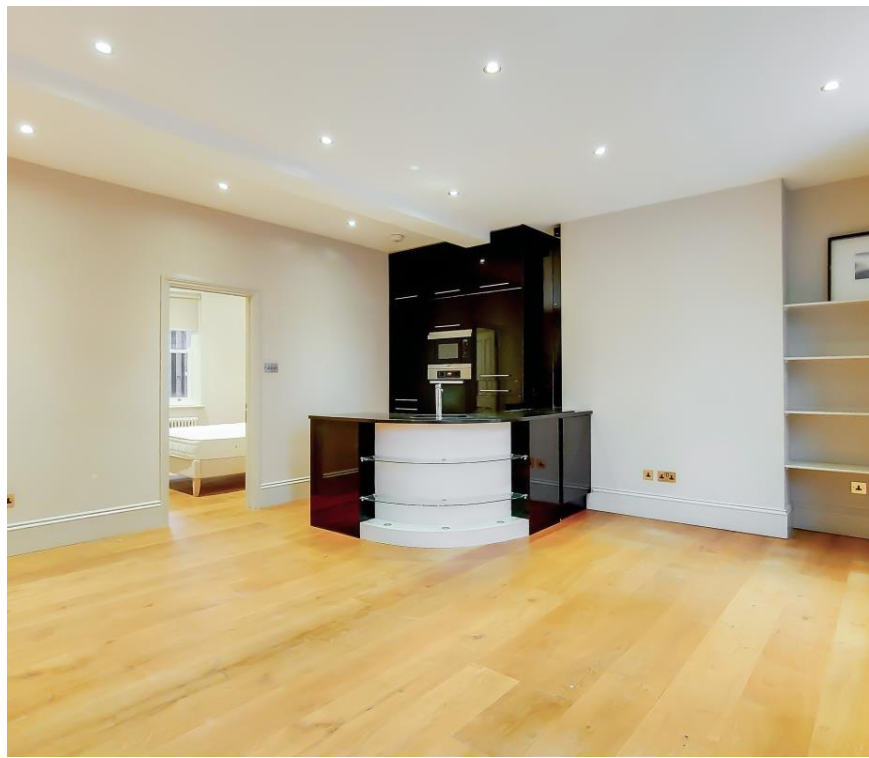




## Lawrence Mansions, London SW3

Price £800 per week - Part Furnished, Unfurnished







# Description

A spacious and well presented second floor flat (no lift) in this period building in Lordship Place. The property consists of master bedroom with en suite bathroom, second double bedroom, one shower room, reception room and a fully fitted, open plan kitchen. The flat further benefits from wooden flooring throughout. Lawrence Mansions is situated on a quiet street in Old Chelsea and so it is a stone's throw from the river and the many amenities of the King's Road.

As well as paying the rent, you may also be required to make some additional permitted payments. If your tenancy does not qualify as an AST, additional fees may apply. Please visit [jll.co.uk/fees](http://jll.co.uk/fees) for details of fees which may be payable when renting a property.

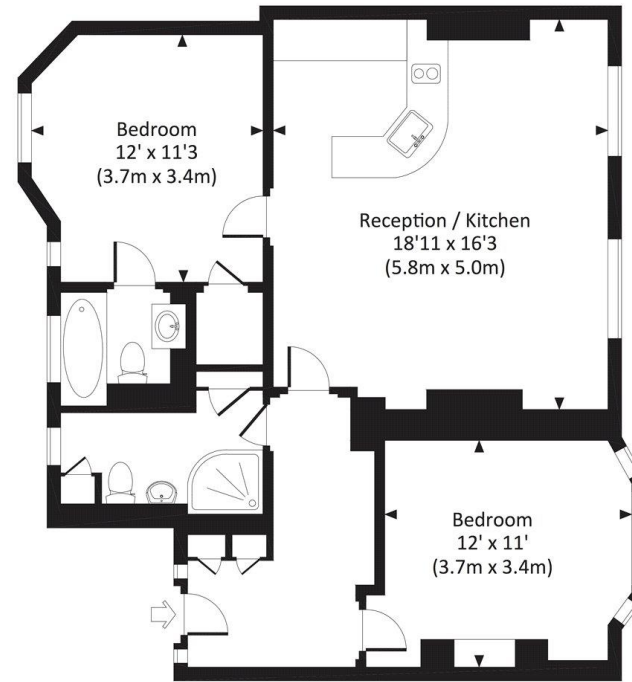
- Unfurnished flat
- 2 Double bedroom
- 1 Bathroom (en suite)
- 1 Shower room
- Reception room
- Open plan kitchen
- Second floor
- Approx. 799 sq ft (74.3 sq m)
- EPC: C



# Floorplan

799 sq ft | 74 sq m

Approx. gross internal area  
799 Sq.Ft. / 74.3 Sq.M.



SECOND FLOOR

All measurements have been made in accordance with BIC3 Code of Measuring Practice which are approximate only and only for illustrative purposes. For the avoidance of doubt, Dowling Jones Design shall not be liable for any reliance on these measurements. © 2016 www.dowlingjones.com 020 7610 9983

Chelsea  
2 Cale Street,  
London SW3 3QU  
+4420 7399 5010  
lettingschelsea@eu.jll.com

*Urban living, your way.*

[jll.co.uk/residential](http://jll.co.uk/residential)

© 2019 Jones Lang LaSalle IP, Inc. All rights reserved. All information contained herein is from sources deemed reliable; however, no representation or warranty is made to the accuracy thereof.

