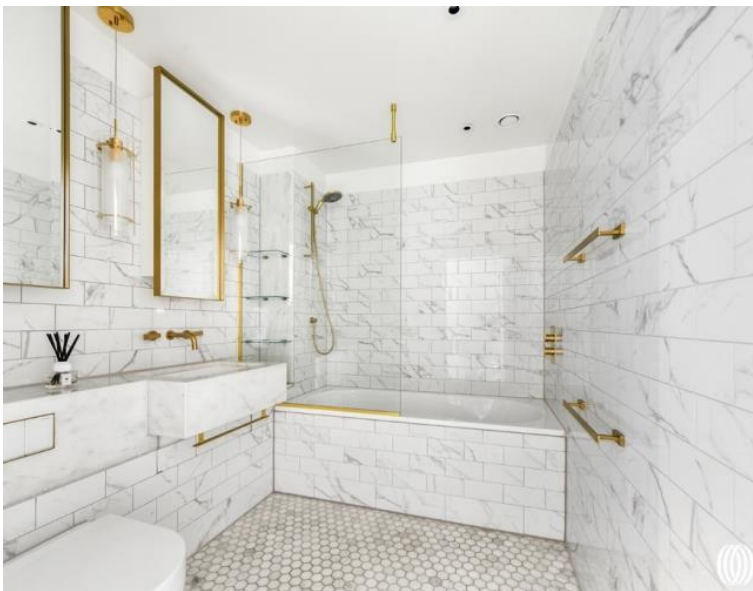
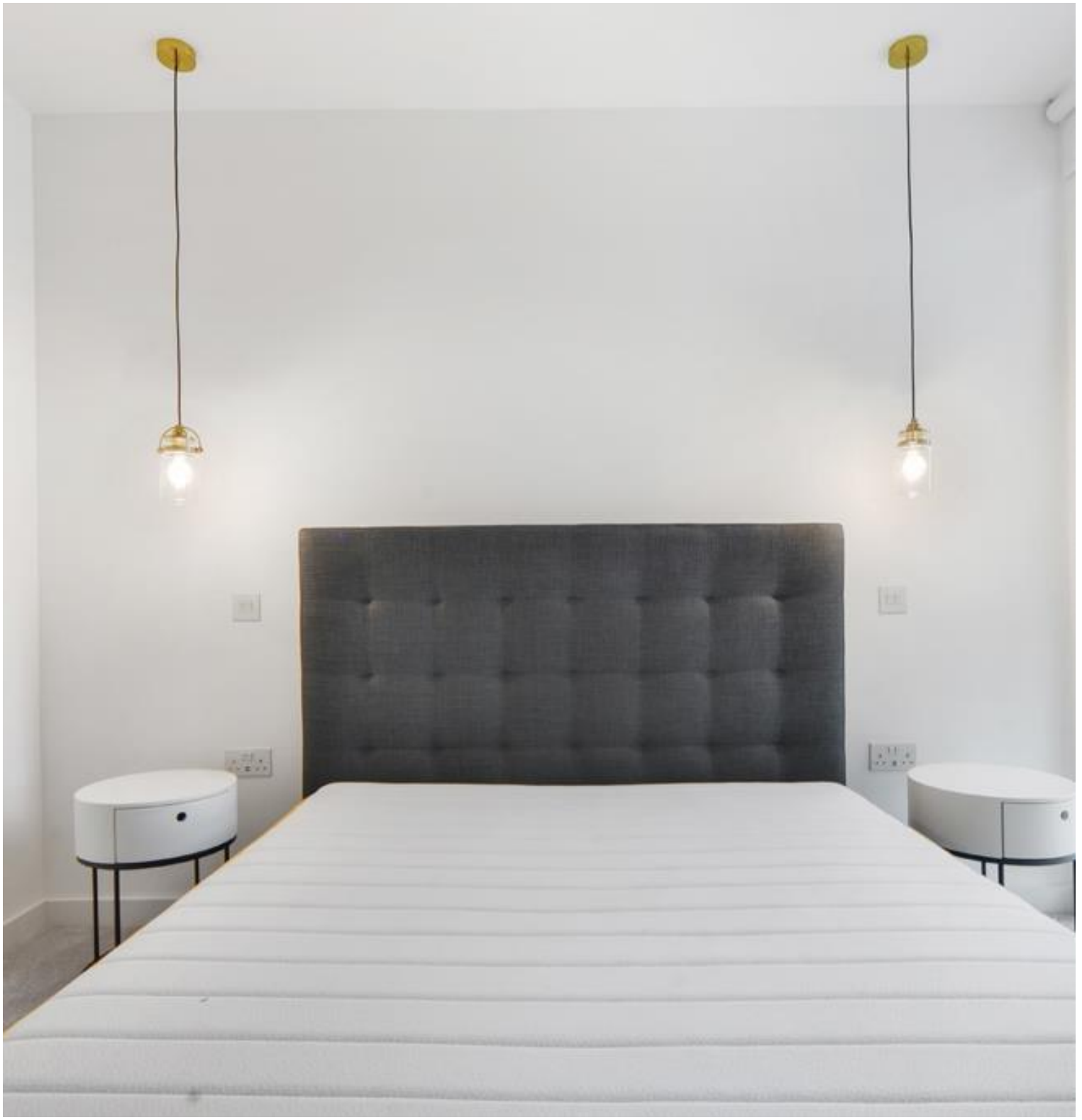


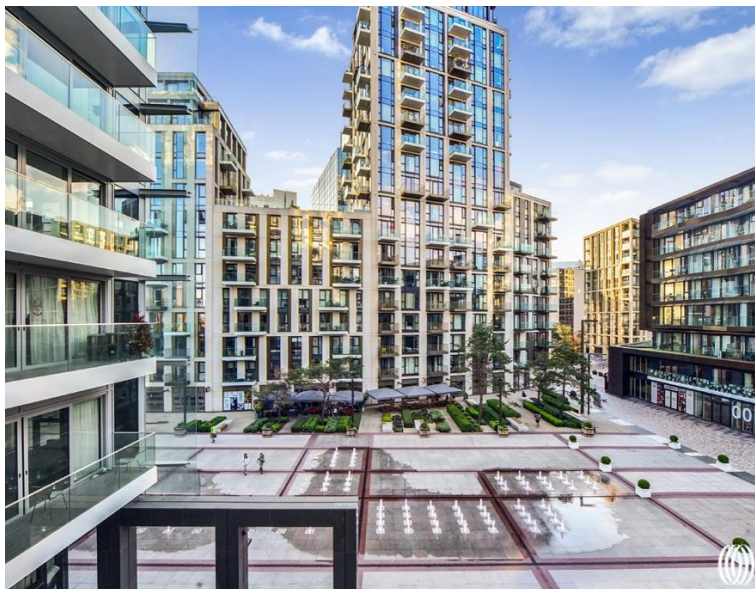


Gauging Square, London E1W

Price £995 per week - Furnished







Description

This spacious two bedroom two bathroom property has been both finished and furnished to the highest standard with luxurious fixtures and fittings throughout.

The property benefits from an open plan reception room with fully fitted kitchen and leading to a private terrace.

The property also benefits from 5* onsite leisure facilities, water gardens and 24 hour concierge.

London Dock is situated a short walk from Waitrose, local coffee shops and pubs, Tower Hill and Fenchurch Street stations.

Rent: £995 per week

As well as paying the rent, you may also be required to make the following permitted payments. If your tenancy does not qualify as an AST, additional fees may apply.

Please visit jll.co.uk/fees for details of fees which may be payable when renting a property.

EPC Rating: B

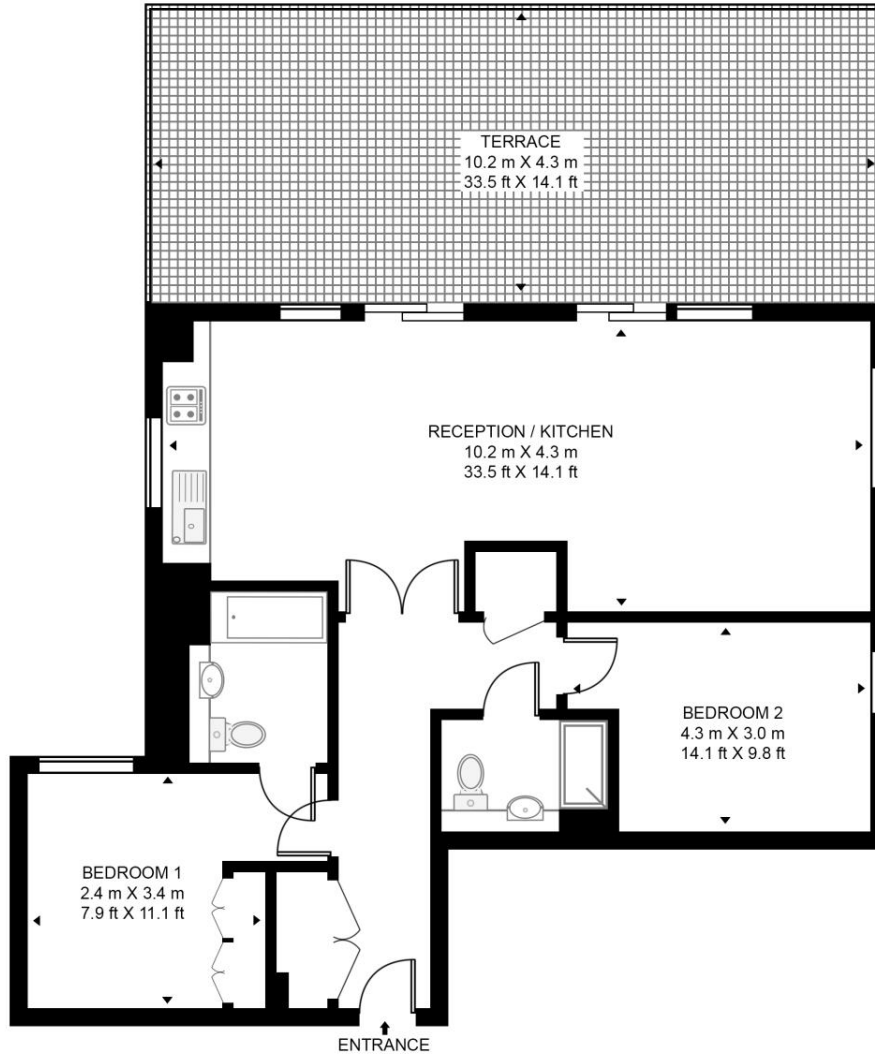
- 2 Bedroom
- 2 Bathroom
- Ample storage
- Close to local amenities
- Swimming pool, sauna and steam
- Gym & squash court
- Cinema & virtual golf
- Terrace
- Furnished
- EPC: B

Floorplan

960 sq ft | 89 sq m

CASHMERE WHARF

APPROXIMATE GROSS INTERNAL FLOOR AREA 960 SQ.FT (89.2 SQ.M)



FOURTH FLOOR



This floor plan has been defined by the RICS Code of Measurement. This floor plan and all others are for approximate representative purposes only and upon usage is agreed to as such by the client.
WWW: hdvirtualart.com | TEL: 0203.974.1567 | EMAIL: info@hdvirtualart.com

City
25 Walbrook The Walbrook
Building,
London EC4N 8AF
+4420 7337 4000

Urban living, your way.

jll.co.uk/residential

© 2019 Jones Lang LaSalle IP, Inc. All rights reserved. All information contained herein is from sources deemed reliable; however, no representation or warranty is made to the accuracy thereof.

