

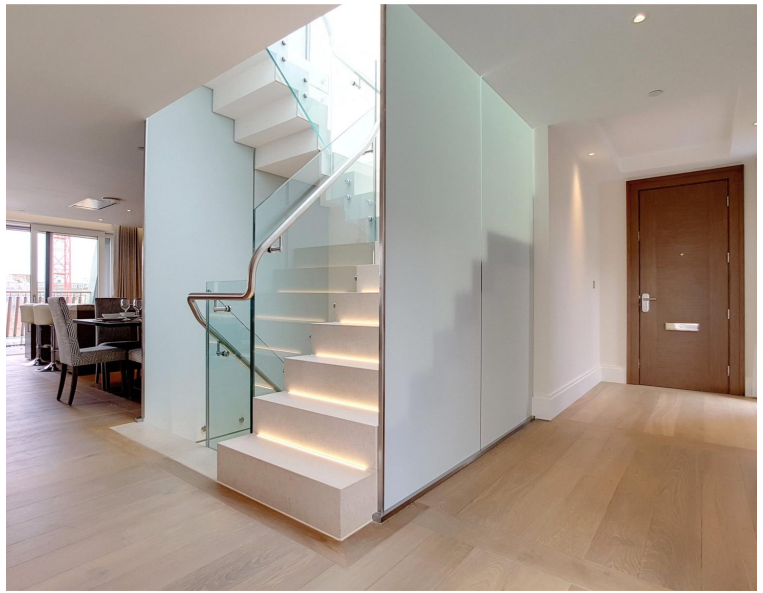


Arundel Street, London WC2R

Price £2,650 per week - Furnished







Description

A truly stunning 3 bedroom penthouse in the luxurious 190 Strand.

This beautifully presented triplex apartment is arranged over three floors and boasts stunning views of the river Thames, Houses of Parliament and the London Eye. The lower level comprises 3 double bedrooms each with a luxury marble finished en-suite and balconies from bedrooms one and two. The mid-level boasts a stunning open plan living area, fully fitted kitchen and West facing balcony, and the top floor is a large roof terrace with panoramic views.

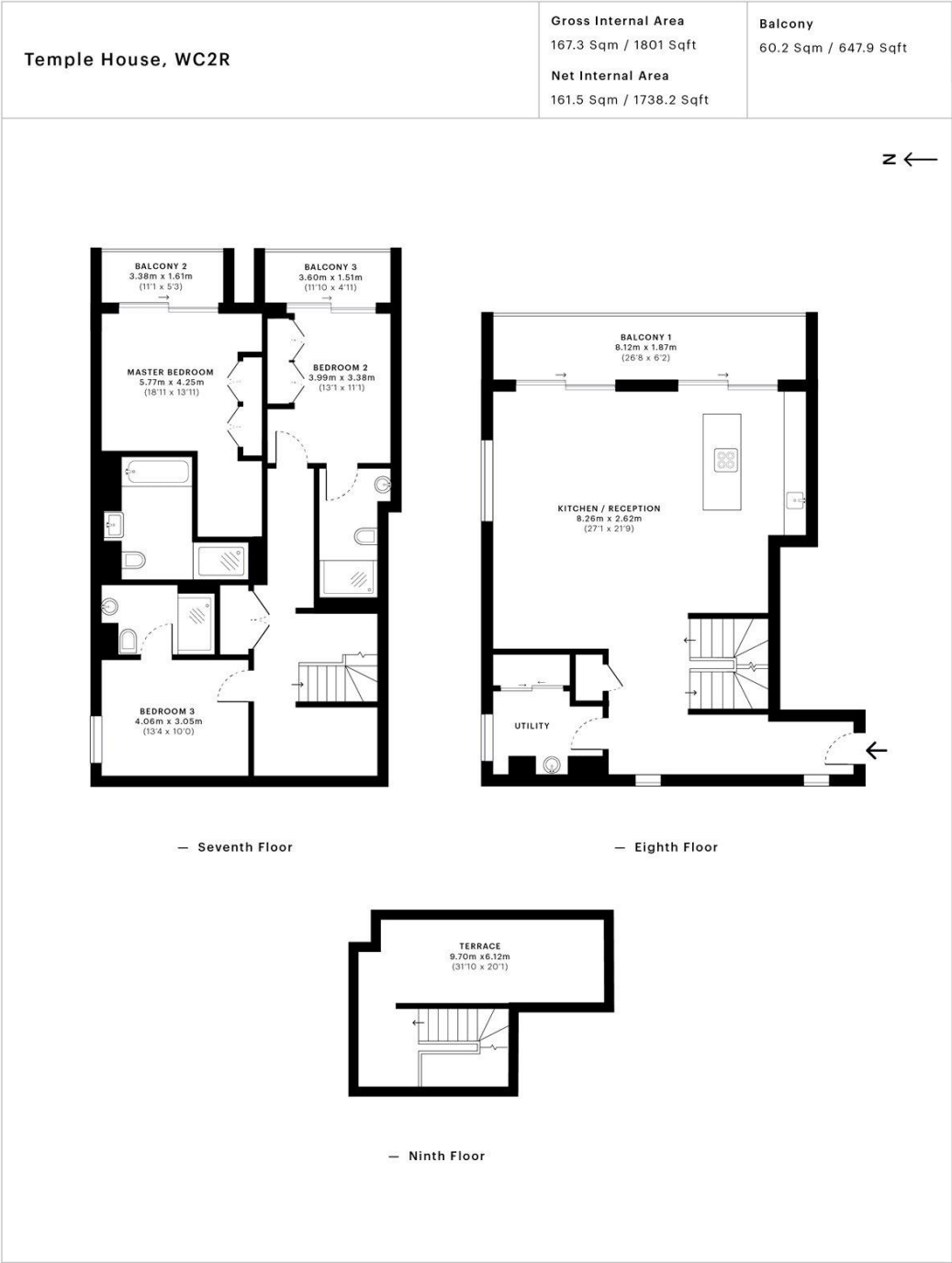
Benefits include on site gym, pool, cinema, business / conference facilities and 24 hour concierge. The development is situated on the world famous Strand, Westminster WC2, (approx) 0.2 miles from Temple station and (approx) 0.5 miles from Covent Garden.

As well as paying the rent, you may also be required to make some additional permitted payments. If your tenancy does not qualify as an AST, additional fees may apply. Please visit jll.co.uk/fees for details of fees which may be payable when renting a property.

- 3 Bedroom Penthouse
- 3 Bathrooms
- Roof terrace and 2 balconies
- On site gym and pool
- 24 hour concierge
- 0.2 miles from Temple Station
- Approx. 1,992 sq ft (185.1 sq m)
- Furnished
- EPC: B

Floorplan

1,801 sq ft | 167 sq m



This floor plan was captured for JLL, City Office on 20/03/2018. Architectural features to scale, derived from millions of laser scan points, accurate to +/- 3cm and produced in accordance with the Royal Institute of Chartered Surveyors Property Measurement standards. Gross Internal Area is measured from the internal faces of external walls and includes internal walls/obstructions. Net Internal Area excludes internal walls/obstructions. Please perform your own checks before relying on these figures in any transaction.



City
25 Walbrook The Walbrook
Building,
London EC4N 8AF
+4420 7337 4000

Urban living, your way.

jll.co.uk/residential

© 2019 Jones Lang LaSalle IP, Inc. All rights reserved. All information contained herein is from sources deemed reliable; however, no representation or warranty is made to the accuracy thereof.

