



Rathbone Place, London W1T

Price £1,100 per week - Furnished







Description

The apartment comprises a modern open-plan kitchen with a spacious reception room leading out onto the private balcony. There is a double bedroom with en suite bathroom and built-in storage.

Residents have access to a 24 hour concierge, gym, swimming pool, sauna and steam room, beautiful gardens, residents' lounge, wine storage and tasting room, screening room,

Moments from Oxford Street and located in the heart of London's West End, Rathbone Square is ideal for transport links in and around London with The City and West London being just 10 minutes away via the underground.

As well as paying the rent, you may also be required to make some additional permitted payments. If your tenancy does not qualify as an AST, additional fees may apply. Please visit jll.co.uk/fees for details of fees which may be payable when renting a property.

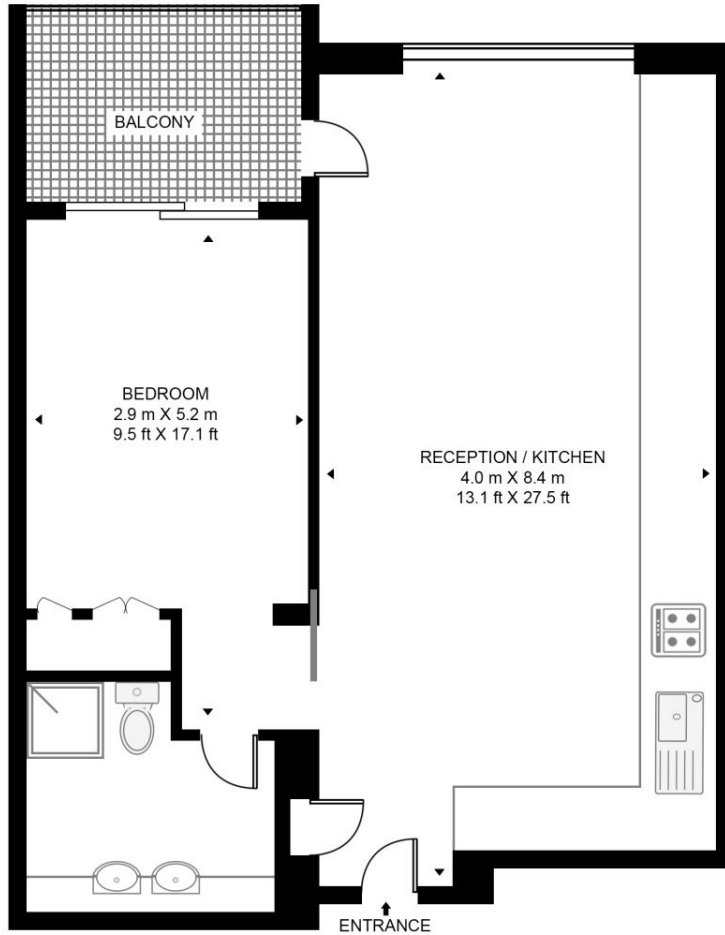
- Modern Apartment
- 24hr Concierge Service
- Private Balcony
- En-Suite Bathroom
- Wooden Flooring
- Furnished
- Gym
- Pool & Spa

Floorplan

584 sq ft | 54 sq m

RATHBONE SQUARE, RATHBONE PLACE

APPROXIMATE GROSS INTERNAL FLOOR AREA 584 SQ.FT (54.3 SQ.M)



THIRD FLOOR



This floor plan has been defined by the RICS Code of Measurement. This floor plan and all others are for approximate representative purposes only and upon usage is agreed to as such by the client.

WWW: hdvirtualart.com | TEL: 0203.974.1567 | EMAIL: info@hdvirtualart.com

Mayfair and Marylebone
13a St George Street,
London W1S 2FQ
+44 207 399 5550
mayfair@jll.com

Urban living, your way.

jll.co.uk/residential

© 2019 Jones Lang LaSalle IP, Inc. All rights reserved. All information contained herein is from sources deemed reliable; however, no representation or warranty is made to the accuracy thereof.

