



Croxford Gardens, London N22

Guide price £550,000 Freehold





Description

****Chain Free**** A well maintained three-bedroom mid-terrace family house situated on a quiet residential 'cul de sac'.

The property has been thoughtfully decorated by the current vendor in line with its use as a HMO. The ground floor features spacious reception rooms, and a galley kitchen that offers access to a patio and garden. The first floor boasts three bedrooms and a family bathroom.

Croxford Gardens is ideally situated for the vibrant Wood Green shopping area with all its bars and restaurants and with easy access to both Wood Green and Turnpike Lane Underground station. The green open spaces of White Hart Lane Recreation Ground are also close by.

Early viewings are highly recommended.

- 3 Bedrooms
- 2 Bathrooms
- 2 Reception rooms
- Front and rear garden
- Approx. 952 sq ft (88.4 sq m)
- 0.8 Miles to Wood Green
- Excellent schools situated nearby
- Cul-de-sac location
- EPC: C



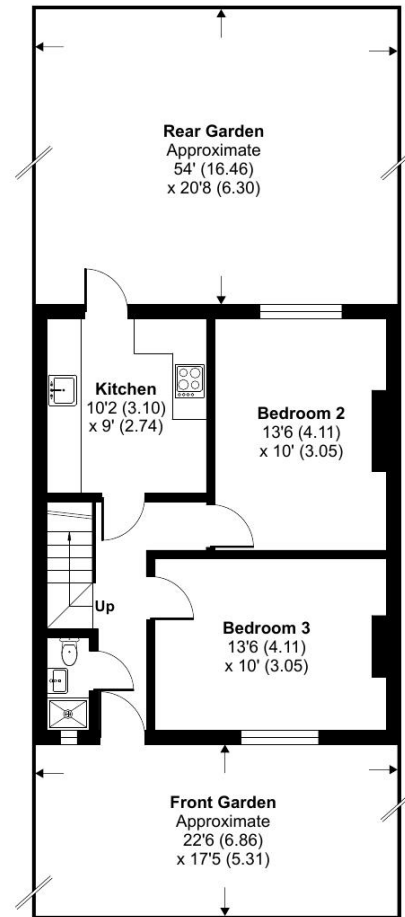
Floorplan

952 sq ft | 88 sq m

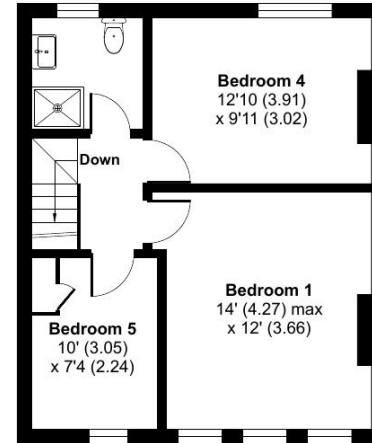
Croxford Gardens, London, N22

Approximate Area = 952 sq ft / 88.4 sq m

For identification only - Not to scale



GROUND FLOOR



FIRST FLOOR



Floor plan produced in accordance with RICS Property Measurement Standards incorporating International Property Measurement Standards (IPMS2 Residential). © ncheom 2023. Produced for JLL Residential. REF: 1056890

Wood Green
1 Mary Neuner Road,
London N8 0ER
+442073187800

Urban living, your way.

jll.co.uk/residential

© 2019 Jones Lang LaSalle IP, Inc. All rights reserved. All information contained herein is from sources deemed reliable; however, no representation or warranty is made to the accuracy thereof.

