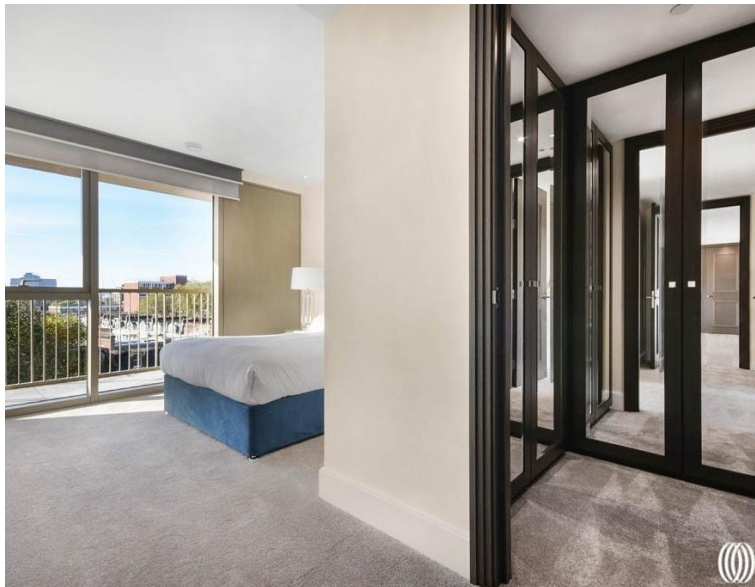


## Warwick Lane, London W14

Asking price £1,700,000 Leasehold







## Description

A luxury two bedroom apartment with private balcony in a secure development in Kensington.

This apartment is set on the sixth floor of the newest building in Royal Warwick Square, the latest phase of 375 Kensington High Street.

The property comprises a bright open-plan kitchen and living room with picture windows leading to the private balcony, a spacious en-suite master bedroom with walk-in wardrobe, second spacious double bedroom and a family bathroom. Residents benefit from secure living with 24-hour concierge, also get the added benefit of luxury facilities which include a gym, swimming pool and spa.

Royal Warwick Square is located close to Kensington High Street with easy access into Central London and also a direct route to Heathrow airport.

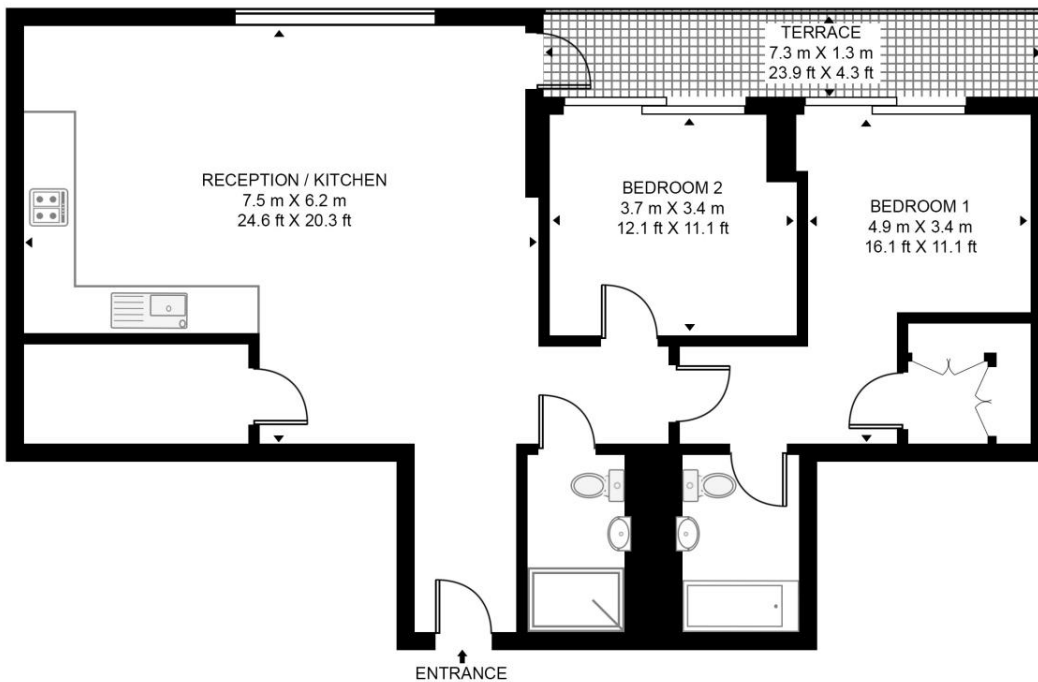
- 2 Bedrooms
- 2 Bathrooms
- Open-plan living room
- Private balcony
- 24 Hour concierge
- Resident facilities
- Approx 1078 sq ft (100 sq m)
- EPC: B

# Floorplan

1,078 sq ft | 100 sq m

## SHERRIN HOUSE

APPROXIMATE GROSS INTERNAL FLOOR AREA 1078 SQ.FT (100.2 SQ.M)



SIXTH FLOOR

**HDVA**

This floor plan has been defined by the RICS Code of Measurement. This floor plan and all others are for approximate representative purposes only and upon usage is agreed to as such by the client.  
WWW: [hdvirtualart.com](http://hdvirtualart.com) | TEL: 0203.974.1567 | EMAIL: [info@hdvirtualart.com](mailto:info@hdvirtualart.com)

Kensington  
387 Kensington High Street,  
London W14 8QA  
+4420 7087 5696  
[saleskensington@eu.jll.com](mailto:saleskensington@eu.jll.com)

*Urban living, your way.*

[jll.co.uk/residential](http://jll.co.uk/residential)

© 2019 Jones Lang LaSalle IP, Inc. All rights reserved. All information contained herein is from sources deemed reliable; however, no representation or warranty is made to the accuracy thereof.

