



Lancaster Street, London SE1

Price £540 per week - Furnished







Description

A spacious 1 bedroom in the new Zeiss Building, SE1.

This stunning 1 bedroom apartment is offered fully furnished and comprises a spacious living room, contemporary kitchen with fully fitted Siemens appliances, balcony with access from living room and bedroom, double bedroom with walk-in wardrobe, luxury bathroom, large storage cupboard with additional utility cupboard, and wood flooring.

The development has a high specification with surround sound system in each apartment. The apartment is within each reach of the ever vibrant Borough area (0.8 miles from borough market) and close to Southwark underground station (0.3 miles) and Borough underground station (0.5 miles)

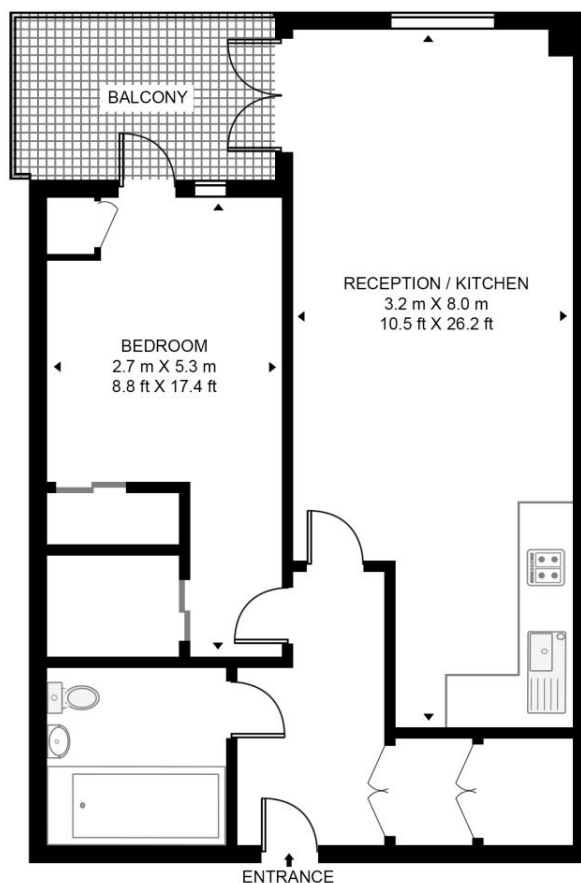
As well as paying the rent, you may also be required to make some additional permitted payments. If your tenancy does not qualify as an AST, additional fees may apply. Please visit jll.co.uk/fees for details of fees which may be payable when renting a property.

- 1 Bedroom
- 1 Bathroom
- 2nd floor
- High specification
- Balcony
- Approx. 0.3 miles from Southwark station
- Approx. 540 sq ft (50.2 sq m)
- Furnished
- EPC: B

Floorplan

540 sq ft | 50 sq m

ZEISS BUILDING, 46 LANCASTER STREET
APPROXIMATE GROSS INTERNAL FLOOR AREA 540 SQ.FT (50.2 SQ.M)



SECOND FLOOR



This floor plan has been defined by the RICS Code of Measurement. This floor plan and all others are for approximate representative purposes only and upon usage is agreed to as such by the client.

WWW: hdvirtualart.com | TEL: 0203.974.1567 | EMAIL: info@hdvirtualart.com

City
25 Walbrook The Walbrook
Building,
London EC4N 8AF
+4420 7337 4000

Urban living, your way.

jll.co.uk/residential

© 2019 Jones Lang LaSalle IP, Inc. All rights reserved. All information contained herein is from sources deemed reliable; however, no representation or warranty is made to the accuracy thereof.

