

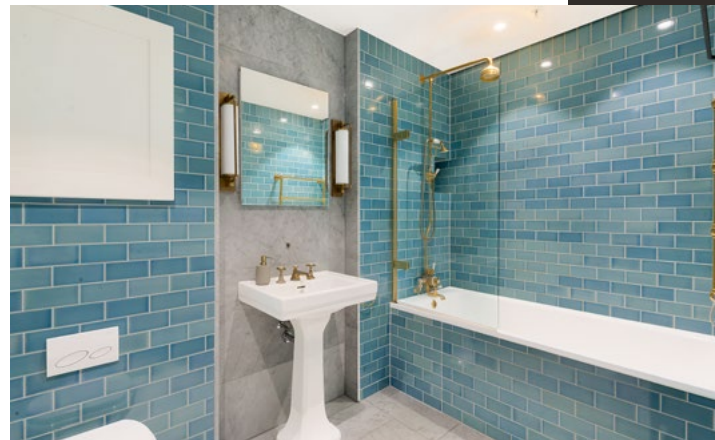


VICTORIA ST.

WESTMINSTER SW1

A generously proportioned apartment located in the exclusive 55 Victoria Street development

Situated on the first floor and offering views over Victoria Street and Christchurch Gardens, this spacious apartment comprises one bedroom, one bathroom, and a large open-plan kitchen, living, and dining room. The apartment further benefits from good natural light and storage throughout



Accommodation

- One bedroom
- One bathroom
- Open-plan kitchen/dining/living
- 24-Hour concierge
- Residents' gym
- Communal roof garden



Approximate Gross
Internal Area

882 sq ft / 82.03 sq m



CH: Ceiling height

Floorplan for guidance only, not to scale or for valuations purposes. It must not be relied upon as a statement of fact. All measurements and areas are approximate and have been prepared in accordance with the current edition of the RICS Code of Measuring Practice.

© Alex Winship Photography Ltd.



The Development

55 Victoria Street is a luxury development in the heart of Westminster SW1, offering residents' facilities including a gym, 24-hour concierge and an eighth floor communal roof garden with expansive views across central London. St James's Park underground station and Victoria Station are nearby and the open spaces of The Green Park are a 5-minute walk away.

Terms

Guide Price
£1,250,000

Tenure
Leasehold expires
26/05/3012, 987
years remaining

Service Charge
Approximately
£10,500 per annum

Ground Rent
£250 per annum

Local Authority
City of Westminster

Council Tax
Band F

EPC
Rating B



