



Waterfront Drive, London SW10

Price £1,250 per week - Furnished





Description

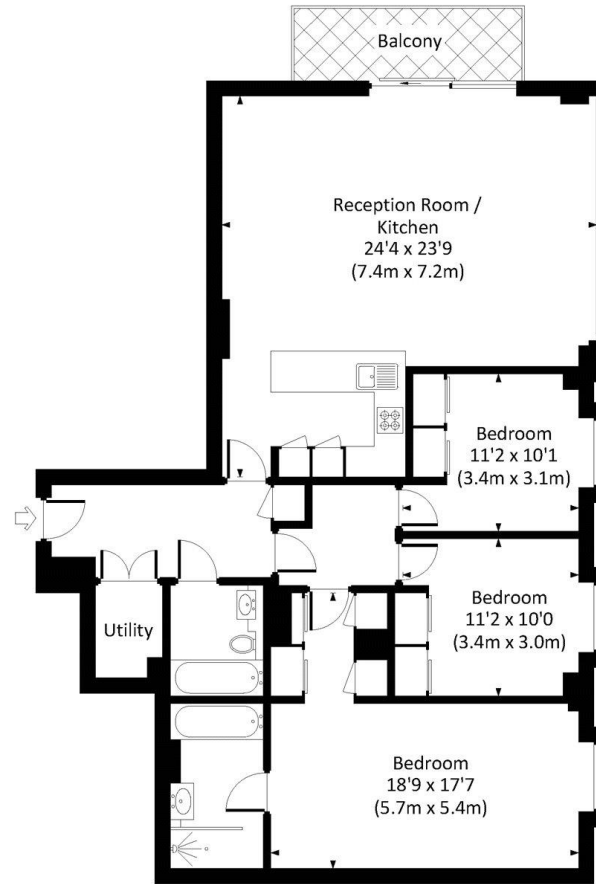
A stunning three bedroom apartment available on the third floor of a portered block in the Chelsea Waterfront development. Property comprises three double bedrooms with built in storage, two large bathrooms, open plan kitchen and living room leading to private balcony, and a storage room.

As well as paying the rent, you may also be required to make some additional permitted payments. If your tenancy does not qualify as an AST, additional fees may apply. Please visit jll.co.uk/fees for details of fees which may be payable when renting a property.

- Three bedrooms
- Two bathrooms
- 24 Hour concierge
- On-site Gym
- Riverside development
- Approx 1308 sq ft (122 sq m)
- Council tax: G
- Furnished
- EPC: B



CHARTWELL HOUSE, SW10
Approx. gross internal area
1308 Sq Ft. / 121.5 Sq M.



THIRD FLOOR



All measurements have been made in accordance with RICS code of Measuring Practice which are approximate only and only for illustrative purposes. For the avoidance of doubt, Dowling Jones Design shall not be liable for any reliance on these measurements. © 2018 www.dowlingjones.com 020 7610 9933

Kensington
387 Kensington High Street,
London W14 8QA
+4420 7087 5696
lettingskensington@eu.jll.com

Urban living, your way.

jll.co.uk/residential

© 2019 Jones Lang LaSalle IP, Inc. All rights reserved. All information contained herein is from sources deemed reliable; however, no representation or warranty is made to the accuracy thereof.

