

Forrester Way, London E15

Asking price £750,000 Leasehold







Description

Opportunity to purchase this spacious and ultra modern 3 double bedroom apartment located on the third floor within one of Stratford's most sought-after locations, New Gardens Quarter, E15.

This desirable apartment comprises of approximately 1034 square feet, offering a high specification separate kitchen with handle-less fitted units, engineered stone worktops, glass splash backs and fully integrated appliances, reception with room-to-dine, 3 double bedrooms (fitted wardrobes to master), 2 private outside areas, one of which a private terrace and two bathrooms (including an en suite).

Residents benefit from a 24-hour concierge service, residents-only gymnasium, underfloor heating throughout and bicycle storage.

Located next to Queen Elizabeth Park boasting a beautifully 2-acre landscaped garden square, the property further benefits from easy access to Westfield Stratford City, short walk to Stratford Underground Station.

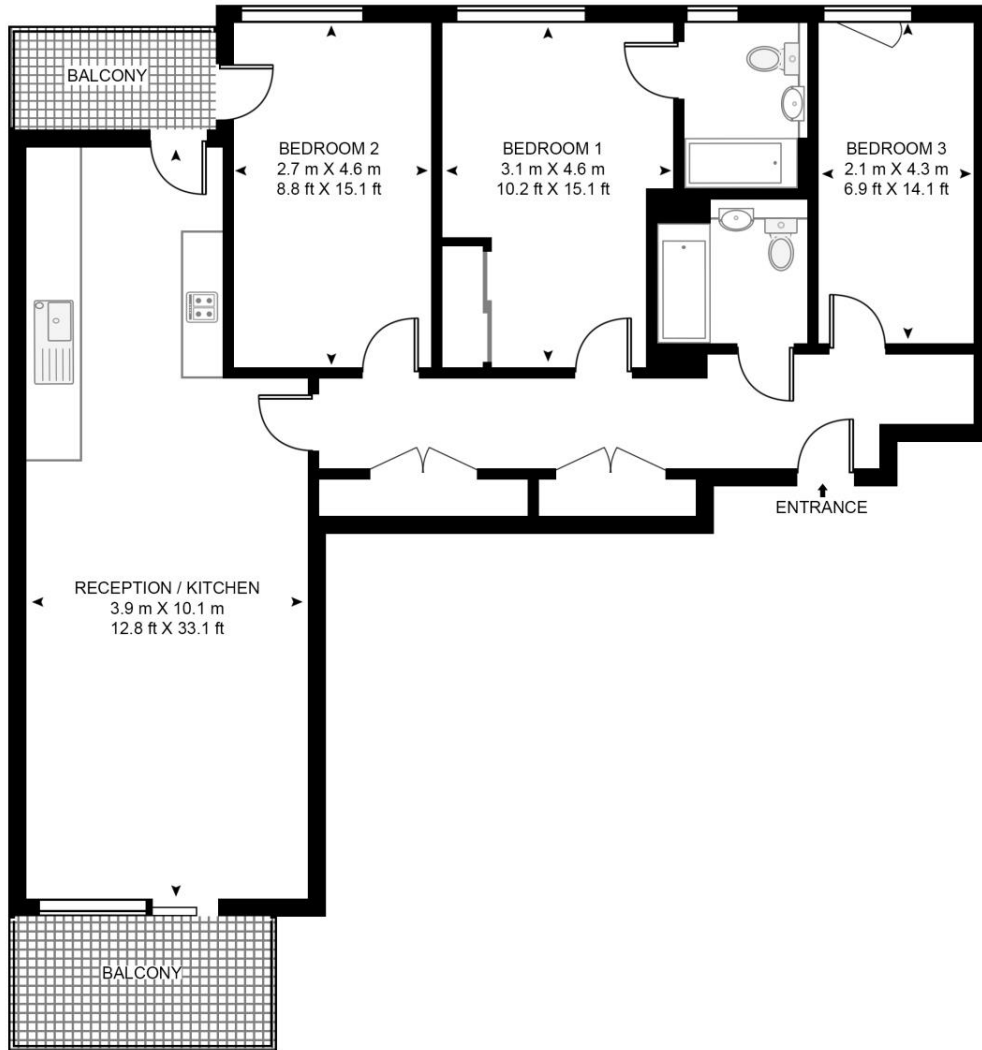
- 3 Bedrooms
- 2 Bathrooms
- Ultra modern
- 2 private balconies
- Ample storage throughout
- Parking available to rent (subject to availability)
- Secure development
- 24 hour concierge
- Resident gym
- Approx. 1034 sq ft (96.1 sq m.)

Floorplan

1,034 sq ft | 96 sq m

GILES HOUSE

APPROXIMATE GROSS INTERNAL FLOOR AREA 1034 SQ.FT (96.1 SQ.M)



THIRD FLOOR



This floor plan has been defined by the RICS Code of Measurement. This floor plan and all others are for approximate representative purposes only and upon usage is agreed to as such by the client.
WWW: hdvirtualart.com | TEL: 0203.974.1567 | EMAIL: info@hdvirtualart.com

Stratford
5 Station Street,
London E15 1DA
+4420 3147 1500
Lettingsstratford@eu.jll.com

Urban living, your way.

jll.co.uk/residential

© 2019 Jones Lang LaSalle IP, Inc. All rights reserved. All information contained herein is from sources deemed reliable; however, no representation or warranty is made to the accuracy thereof.

