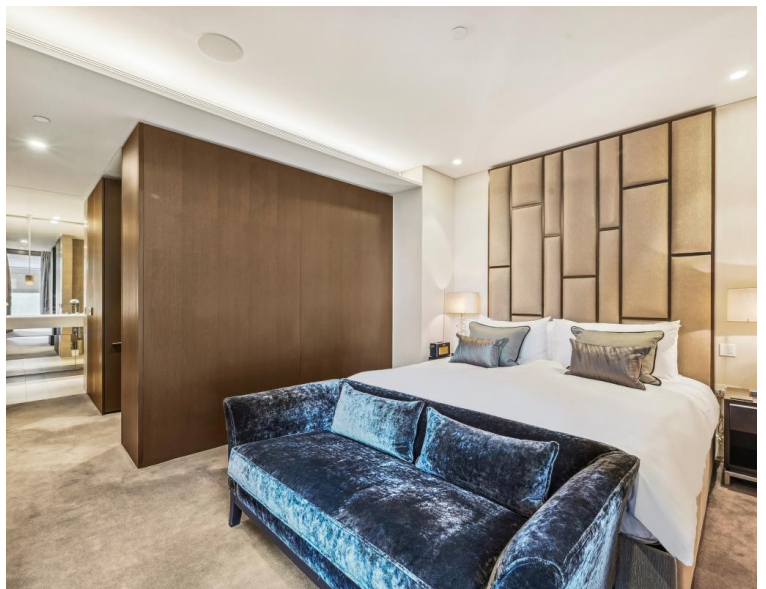
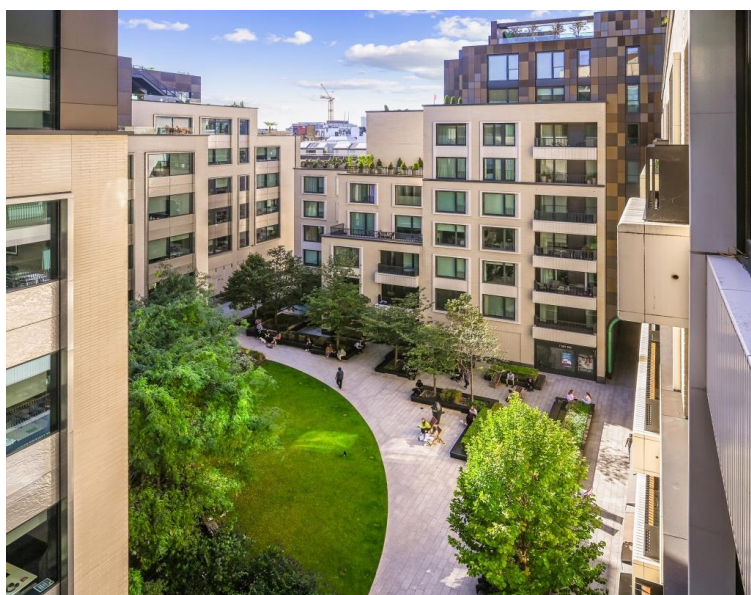
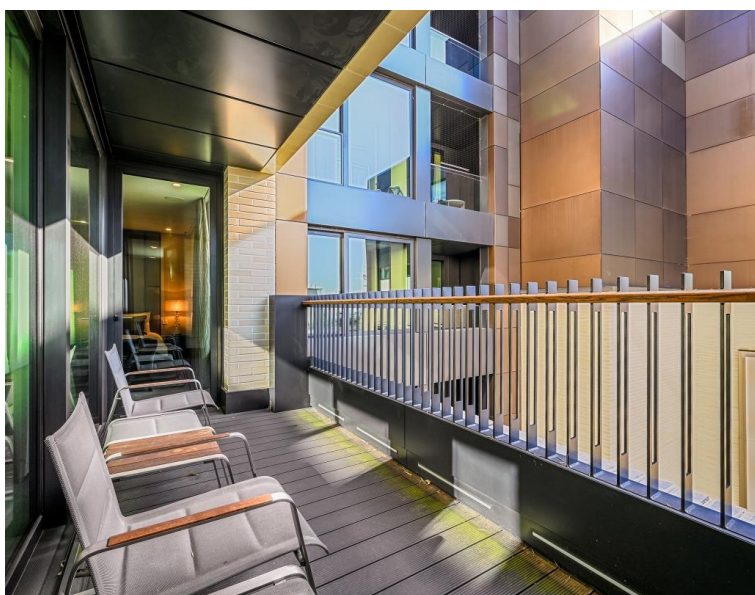


Rathbone Place, London W1T

Price £2,150 per week - Furnished







Description

The apartment has been interior designed to an exceptional standard including custom furniture throughout. Comprising a spacious open-plan kitchen / reception area leading out onto the private balcony, and a separate study area / 3rd bedroom. There is a large principal suite with access to the balcony, a dressing area with built in storage, and an en-suite bathroom with a double sink. There is also a second double bedroom also with built-in storage.

Residents have access to a 24 hour concierge, gym, swimming pool, sauna and steam room, beautiful gardens, residents' lounge, wine storage and tasting room, screening room, Moments from Oxford Street and located in the heart of London's West End, Rathbone Square is ideal for transport links in and around London with The City and West London being just 10 minutes away via the underground.

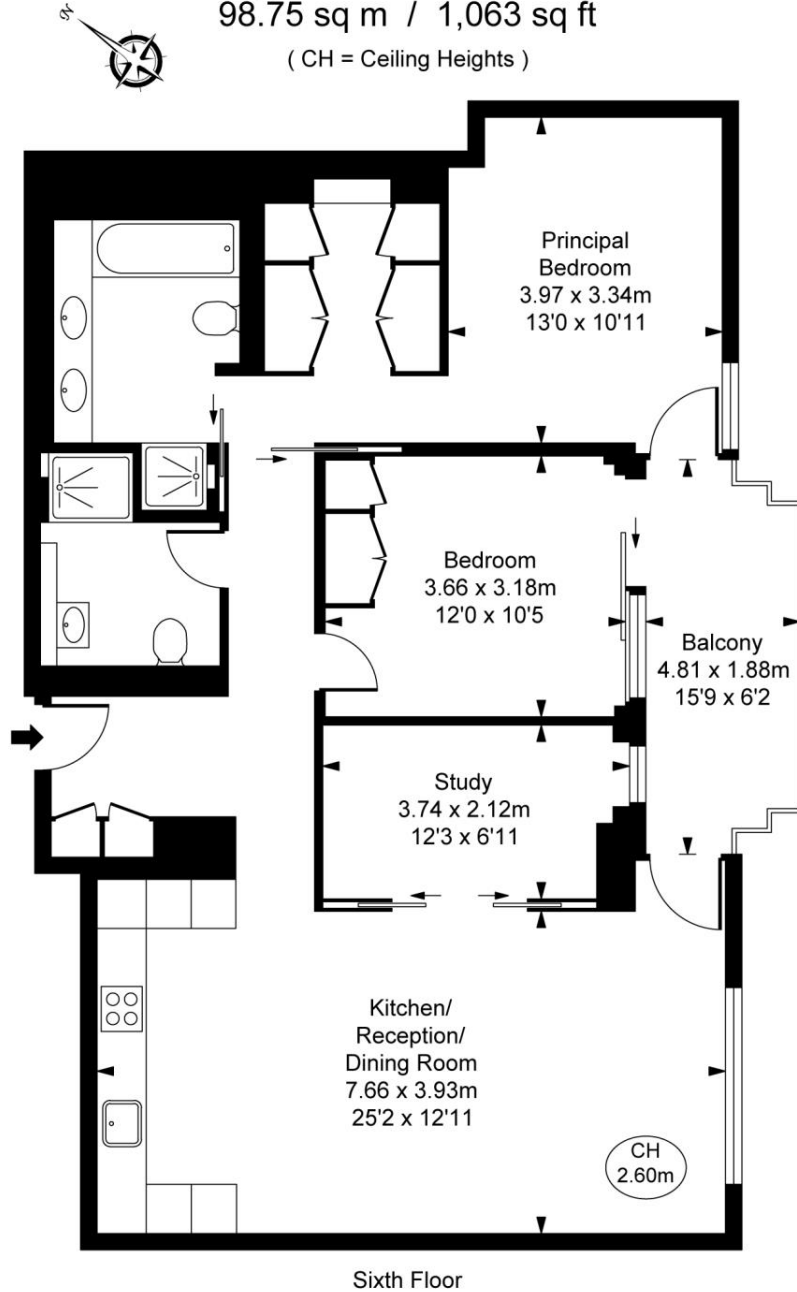
Rent is payable on a monthly basis and you may be required to pay more than a month's rent in advance, depending on your circumstances. You will be required to pay a 1 week holding deposit following a successful offer. Utility bills, council tax, telephone line and broadband are not included in the rent. As well as paying the rent, you may also be required to make some additional permitted payments. If your tenancy does not q

- Bespoke Interior Design
- 24hr Concierge Service
- Private Balcony
- Approx. 99sqm / 1,063sqft
- Separate Study Area
- Residents Gym
- Residents Pool & Pool
- Furnished
- Central Fitzrovia
- Council tax: Band G

Floorplan

1,063 sq ft | 99 sq m

Rathbone Square,
Rathbone Place, W1T
Approximate Gross Internal Area
98.75 sq m / 1,063 sq ft
(CH = Ceiling Heights)



This plan is not to scale. It is for guidance and not for valuation purposes.
All measurements and areas are approximate only, and have been prepared in accordance with the current edition of the RICS Code of Measuring Practice.
© Fulham Performance

Mayfair and Marylebone
13a St George Street,
London W1S 2FQ
+44 207 399 5550
mayfair@jll.com

Urban living, your way.

jll.co.uk/residential

© 2019 Jones Lang LaSalle IP, Inc. All rights reserved. All information contained herein is from sources deemed reliable; however, no representation or warranty is made to the accuracy thereof.

