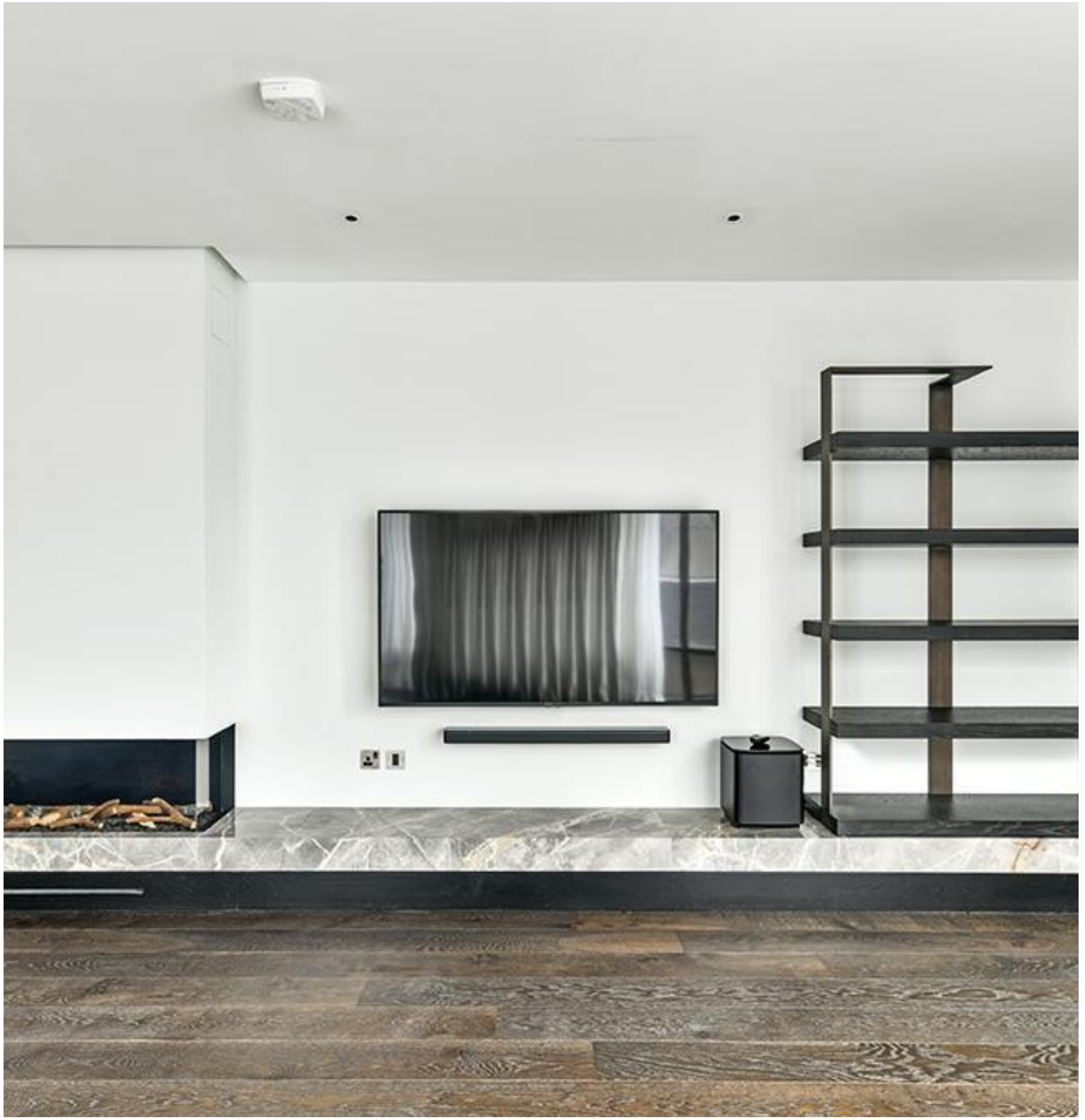




Marylebone Lane, London W1U

Price £3,400 per week - Furnished,
Unfurnished







Description

The apartment measures approx. 152sqm / 1,600sqft with a spacious reception area with floor to ceiling windows leading round through the dining area and into the modern open-plan kitchen with large kitchen island. There is a generously sized principal bedroom with dressing room and a superb en-suite bathroom with double sinks, a standalone bath and a walk-in shower, a further double bedroom with built-in wardrobes, and a second bathroom. The floor to ceiling windows offer an abundance of light, giving the apartment a light and airy atmosphere throughout. From the kitchen to the bathrooms, the materials and design used give the apartment the luxurious feel of a private and intimate sanctuary in the heart of London.

The available furnished or unfurnished.

Residents will benefit from a number of luxurious amenities, including a spa, complete with 25 metre private pool and treatment rooms, a chauffeured Bentley house car service and a 24 hour concierge service.

The Mansion is nestled in a prime Marylebone location, within walking distance to both Marylebone Village and the various shops of Oxford Street.

- Luxury Apartment
- Boutique Development
- 24hr Concierge Service
- Approx. 152msq / 1,600sqft
- Gym
- Swimming Pool & Spa
- Local in House Chauffeur Service
- Offered Furnished or Unfurnished

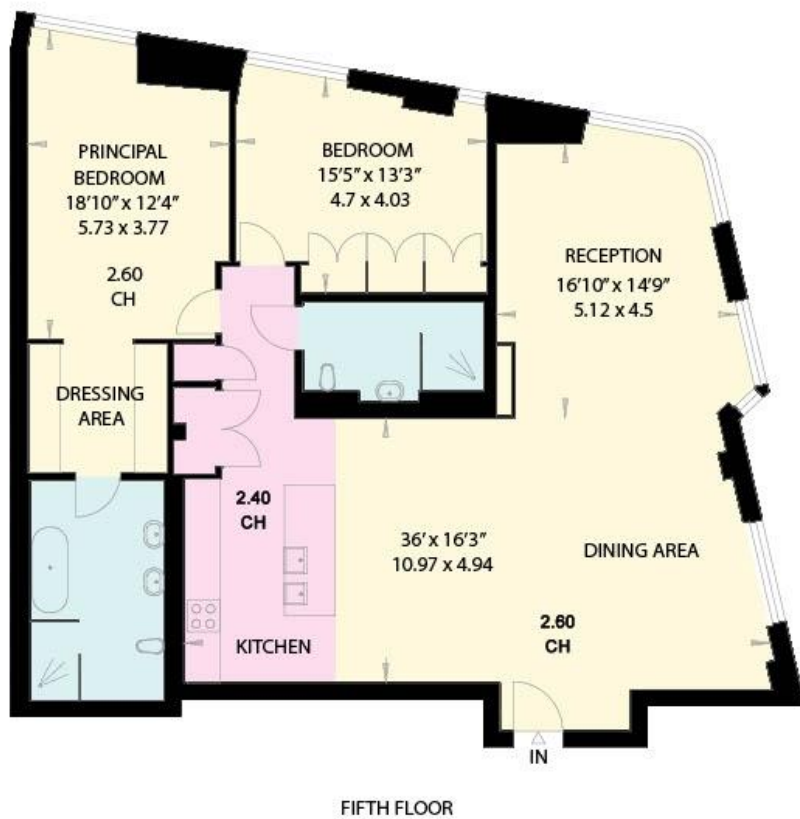
Floorplan

1,600 sq ft | 149 sq m



THE MANSION
LONDON W1

Gross Internal Area = 148.6 sq metres
1600 sq feet



Plans drawn in accordance with the RICS Code of Measuring Practice

Mayfair and Marylebone
13a St George Street,
London W1S 2FQ
+44 207 399 5550
mayfair@jll.com

Urban living, your way.

jll.co.uk/residential

© 2019 Jones Lang LaSalle IP, Inc. All rights reserved. All information contained herein is from sources deemed reliable; however, no representation or warranty is made to the accuracy thereof.

