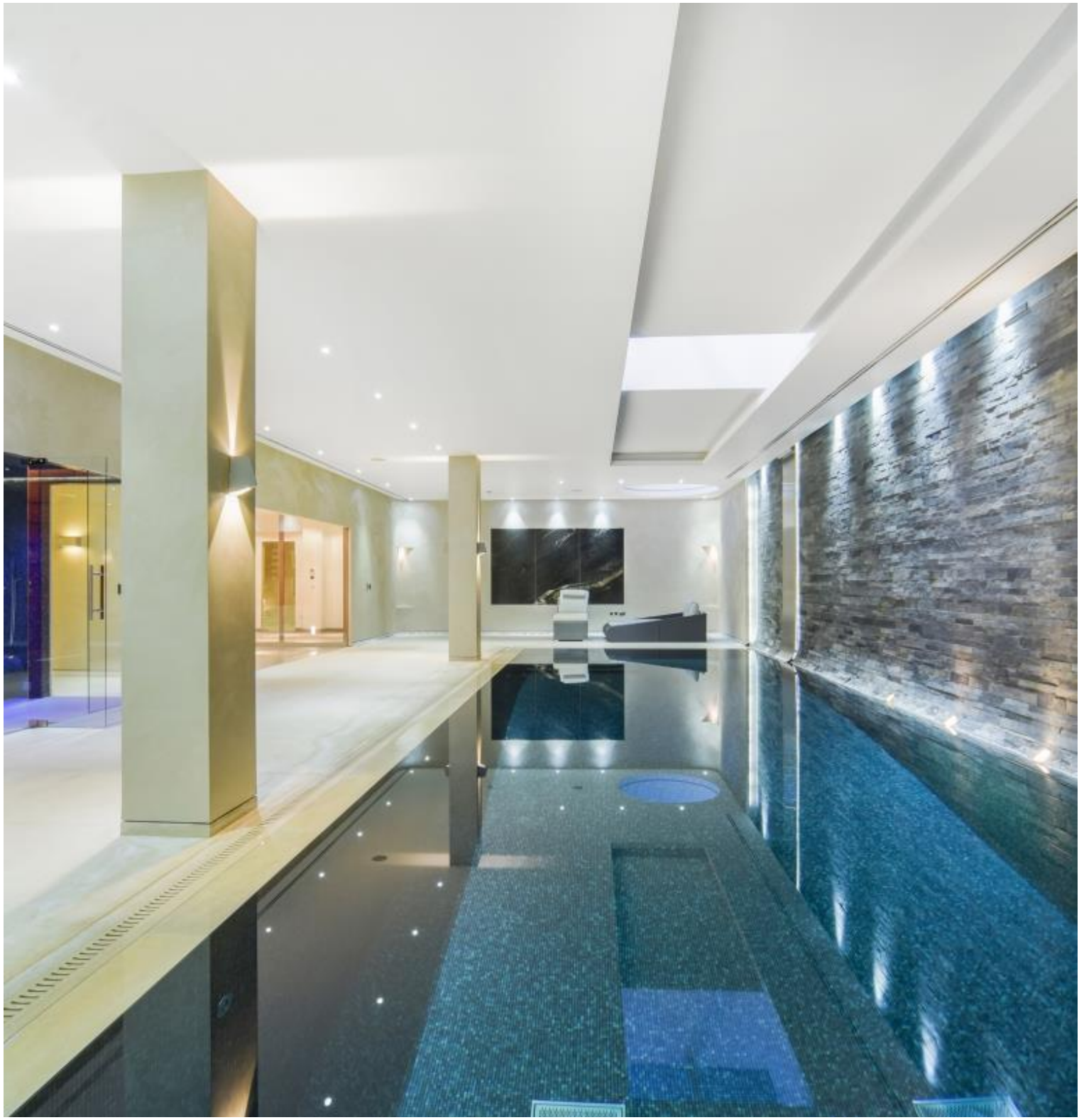


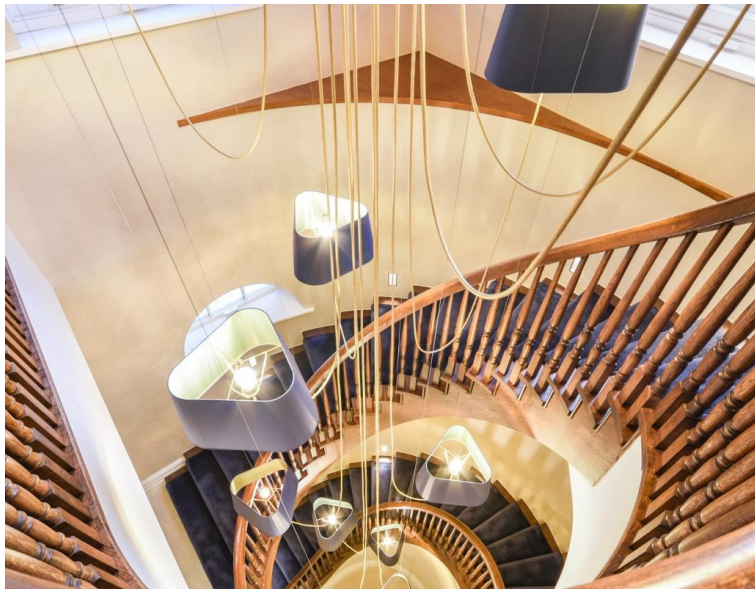


Broomhouse Lane, London SW6

Asking price £13,800,000 Freehold







Description

A substantial and unique six bedroom house overlooking Hurlingham Park in Fulham. The house has undergone extensive refurbishment and is finished to the highest of standards. Arranged over three floors, the house offers six double bedrooms all of which are en-suite, formal living room with fireplace, generous sized office room with fireplace, very large open plan kitchen / dining / family room leading to the private opulent courtyard garden. Other benefits include heated swimming pool, gym, sauna and steam room, cinema, further dining room, staff entrance, CCTV and top of the range alarm system. There is also a gated driveway with space for two cars.

New Lodge is a very short walk from the London Village of Parsons Green and is 0.1 mile to the river Thames. Hurlingham members club is 0.5 miles from the house with Hurlingham Park to the rear of the house.

Access to Heathrow and Central London are both very easy and this house really needs to be seen to be appreciated as it is such a quaint house in a fantastic location.

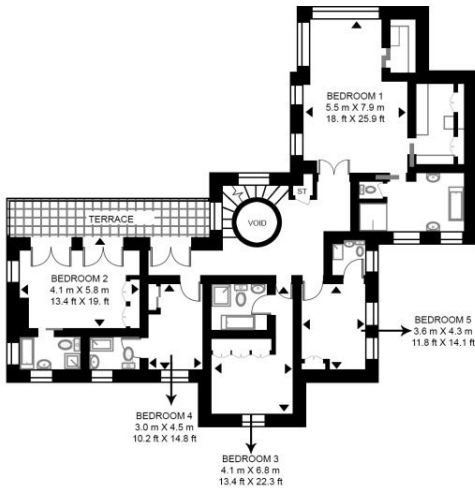
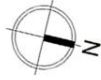
- 6 Double en-suite bedrooms
- Three living rooms
- Cinema, pool, gym
- Private spacious courtyard garden
- Gated driveway for 2 cars
- Views over Hurlingham Park
- Staff quarters with own entrance
- Approx 9559 sq ft (888 sq m)
- EPC: C

Floorplan

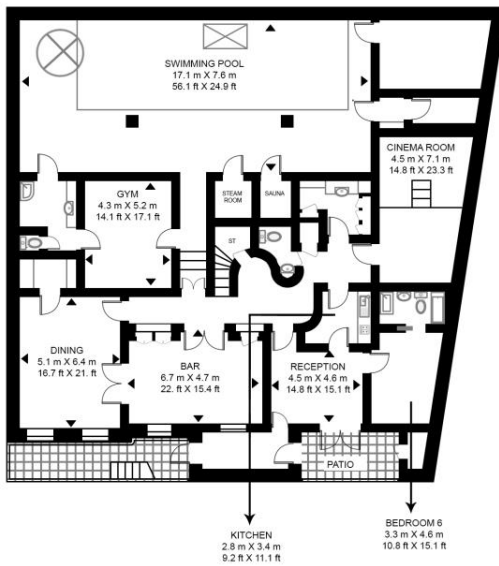
9,559 sq ft | 888 sq m

NEW LODGE, BROOMHOUSE LANE

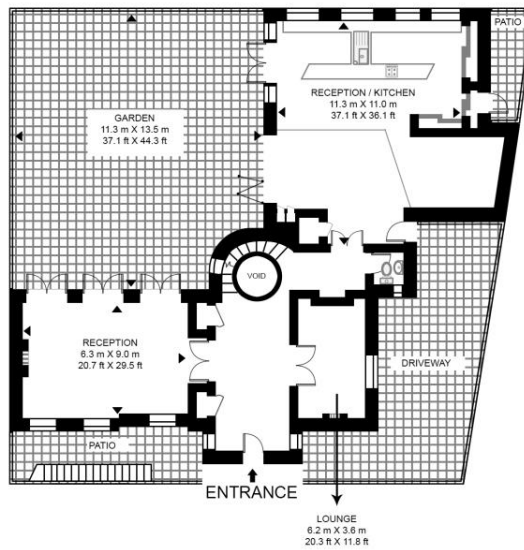
APPROXIMATE GROSS INTERNAL FLOOR AREA 9524 SQ.FT (884.8 SQ.M)



FIRST FLOOR



LOWER GROUND FLOOR



GROUND FLOOR



This floor plan has been defined by the RICS Code of Measurement. This floor plan and all others are for approximate representative purposes only and upon usage is agreed to as such by the client.
WWW: hdvirtualart.com | TEL: 0203.974.1567 | EMAIL: info@hdvirtualart.com

Kensington
387 Kensington High Street,
London W14 8QA
+4420 7087 5696
lettingskensington@eu.jll.com

Urban living, your way.

jll.co.uk/residential

© 2019 Jones Lang LaSalle IP, Inc. All rights reserved. All information contained herein is from sources deemed reliable; however, no representation or warranty is made to the accuracy thereof.

