



## Beaufort Gardens, London SW3

Price £825 per week - Furnished





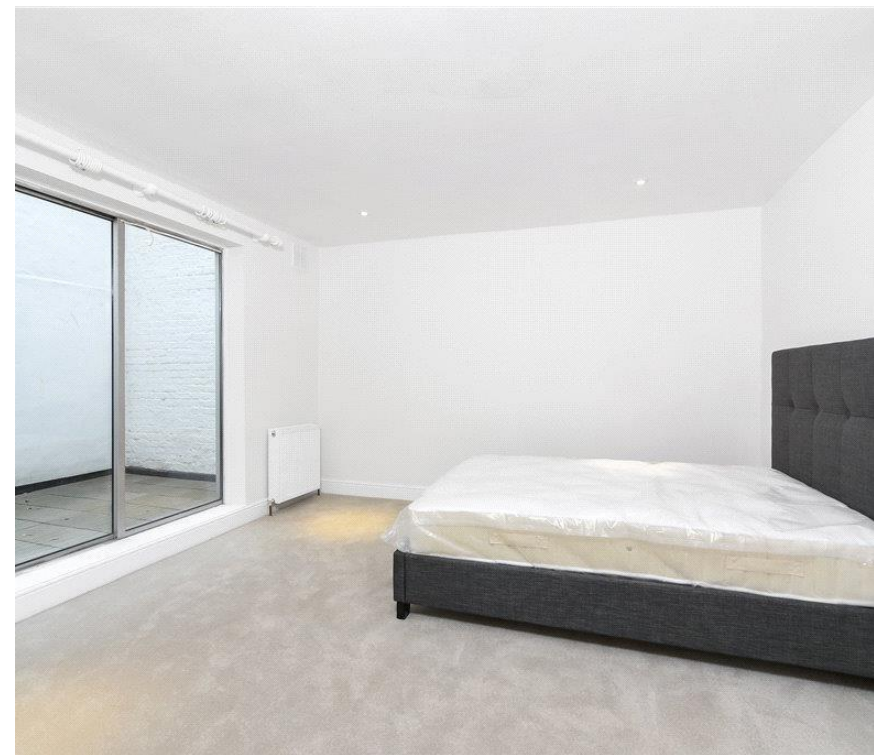
# Description

A lovely lower ground floor flat with private entrance in this period building in the heart of Knightsbridge. The property comprises two double bedrooms, one bathroom, a large reception room and a fully fitted kitchen. The apartment has been finished to the highest of standards and it further benefits from wooden flooring in the reception room and a private courtyard.

Beaufort Gardens is conveniently located moments from the many amenities of Knightsbridge and the open spaces of Hyde Park.

As well as paying the rent, you may also be required to make some additional permitted payments. If your tenancy does not qualify as an AST, additional fees may apply. Please visit [jll.co.uk/fees](http://jll.co.uk/fees) for details of fees which may be payable when renting a property.

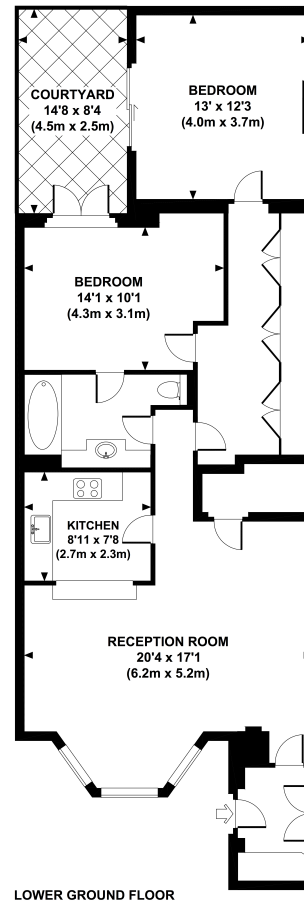
- Two Double bedrooms
- Bathroom
- Reception room
- Fully fitted kitchen
- Courtyard
- Private entrance
- Furnished
- Lower ground floor
- Approx. 954 sq ft (88 sq m)
- EPC: C



# Floorplan

954 sq ft | 89 sq m

Approx. gross internal area  
954 Sq.Ft. / 88.7 Sq.M.



ESP All measurements are approximate and for illustration purposes only as defined by the RICS Code of Measuring Practice © 2014 Dowling Jones Design www.dowlingjones.com 020 7610 9913

Knightsbridge  
Wood Wharf,  
London E14 5GX  
+4420 7306 1600  
lettingsknightsbridge@eu.jll.co

*Urban living, your way.*

[jll.co.uk/residential](http://jll.co.uk/residential)

© 2019 Jones Lang LaSalle IP, Inc. All rights reserved. All information contained herein is from sources deemed reliable; however, no representation or warranty is made to the accuracy thereof.

