



Moor Lane, London EC2Y

Price £630 per week - Furnished







Description

A stunning West facing Galley suite in the luxurious Heron development.

This luxury apartment offers a well sized reception area with West facing balcony, partitioned sleeping area with a desk / working space, open plan kitchen with Miele appliances, dark Porcelain flooring throughout and luxury shower room. The property has a high specification with comfort cooling and central control panel. Offered fully furnished, and well designed to utilise all available space and maximise storage.

The development is located in the heart of the City of London and is within easy reach of stations such as Bank (0.5 miles) and Moorgate (0.2 miles). The Heron benefits from an on-site gym, exclusive resident's club and 24 hour concierge. Parking not included.

We understand that cooling / heating is delivered via a communal system for which separate charges apply.

As well as paying the rent, you may also be required to make some additional permitted payments. If your tenancy does not qualify as an AST, additional fees may apply. Please visit jll.co.uk/fees for details of fees which may be payable when ren

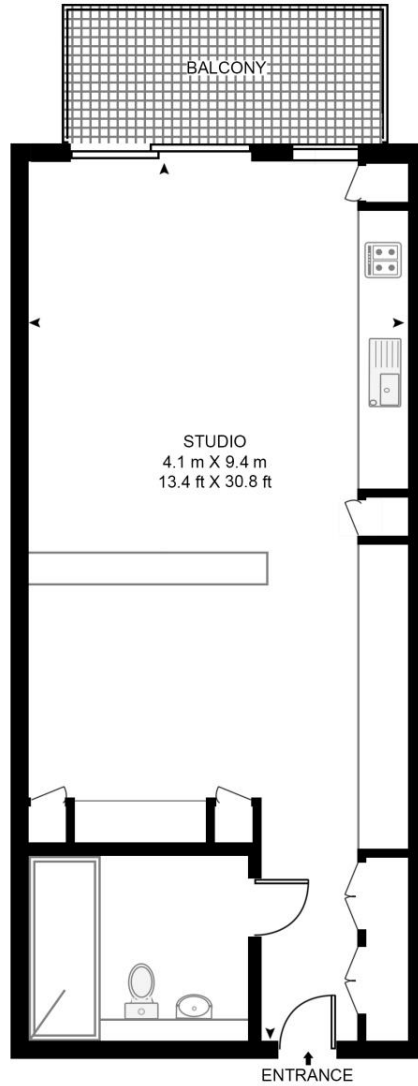
- Studio
- 1 Bathroom
- 24th floor
- Balcony
- High specification
- 24 Hour concierge
- 0.2 miles from Moorgate Station
- Approx. 408 sq ft (38 sq m)
- Furnished
- EPC: C

Floorplan

sq ft | sq m

THE HERON, MOOR LANE

APPROXIMATE GROSS INTERNAL FLOOR AREA 426 SQ.FT (39.6 SQ.M)



TWENTY FOURTH FLOOR



This floor plan has been defined by the RICS Code of Measurement. This floor plan and all others are for approximate representative purposes only and upon usage is agreed to as such by the client.
WWW: hdvirtualart.com | TEL: 0203.974.1567 | EMAIL: info@hdvirtualart.com

City
25 Walbrook The Walbrook
Building,
London EC4N 8AF
+4420 7337 4000

Urban living, your way.

jll.co.uk/residential

© 2019 Jones Lang LaSalle IP, Inc. All rights reserved. All information contained herein is from sources deemed reliable; however, no representation or warranty is made to the accuracy thereof.

