



Marshall Street, London W1F

Price £690 per week - Furnished





Description

A spacious one bedroom apartment located on the fourth floor of this much sought after exclusive gated development close to the many amenities of Soho and Oxford Circus.

The development is also very close to Piccadilly Underground tube station which offers services on the Piccadilly and Bakerloo lines. The apartment benefits from wooden flooring throughout as well as underfloor heating. In addition to fantastic open plan living space, the property benefits from 24 hour concierge and is available on a fully furnished basis.

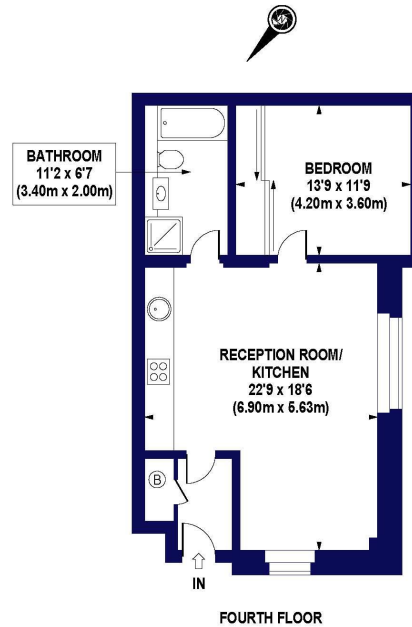
As well as paying the rent, you may also be required to make any applicable permitted payments. If your tenancy does not qualify as an AST, additional fees may apply. Please visit jll.co.uk/fees for details of fees which may be payable when renting a property.

- Large Apartment
- Approx. 670 sq ft (62 sq m)
- Gated Development
- 24 Hour Concierge
- Open-Plan Living
- Wooden Flooring
- Furnished
- Under Floor Heating



Floorplan

670 sq ft | 62 sq m



APPROX. GROSS INTERNAL AREA 670 sq.ft / 62.24 sq.m

COMPLIANT WITH RICS CODE OF MEASURING PRACTICE Floorplan is for illustrative purposes only and is not to scale. Every attempt has been made to ensure the accuracy of the floorplan shown, however all measurements, fixtures, fittings and data shown are an approximate interpretation for illustrative purposes only. Liability for errors, omissions or mis-statement through negligence or otherwise is hereby excluded.

CP | CREATIVE
Property Marketing

Mayfair and Marylebone
13a St George Street,
London W1S 2FQ
+44 207 399 5550
mayfair@jll.com

Urban living, your way.

jll.co.uk/residential

© 2019 Jones Lang LaSalle IP, Inc. All rights reserved. All information contained herein is from sources deemed reliable; however, no representation or warranty is made to the accuracy thereof.

