



Mauritius Road, Greenwich, London SE10 0EH



Mauritius Road, Greenwich, SE10 0EH

Freehold

Located in East Greenwich, this recently renovated beautiful two bedroom period terrace is a stone's throw from the river and some fantastic pubs and cafes.

Key Features

- 2 Double bedrooms
- 1 Bathroom
- Open plan reception / dining room
- Separate fitted kitchen
- Private rear garden
- On street parking
- Close to transport links
- EPC: D

The accommodation offers a through lounge and a large modern fitted kitchen which opens onto a neat south facing garden. Upstairs offers two double bedrooms and a stunning four piece bathroom suite. The property is situated on a quiet no through road and is close to North Greenwich tube station and the Dome.

The property is well located for access to Maze Hill main line station and the North Greenwich Jubilee Line. Central Greenwich is a short walk away and offers an excellent selection of shop, bars and restaurants.





OCTOBER 2023						
SUN	MON	TUE	WED	THUR	FRI	SAT
30	31				5	6
2	3	4			11	12
9	10	11	12	13	14	15
16	17	18	19	20	21	22
23	24	25	26	27	28	29

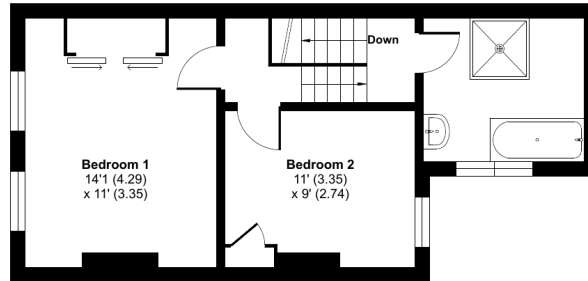




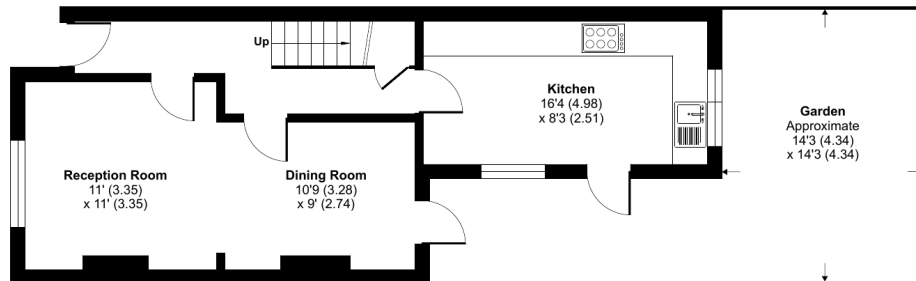
Mauritius Road, London, SE10

Approximate Area = 852 sq ft / 79.1 sq m

For identification only - Not to scale



FIRST FLOOR



GROUND FLOOR



Floor plan produced in accordance with RICS Property Measurement Standards incorporating International Property Measurement Standards (IPMS2 Residential). © rlxhocom 2023. Produced for JLL Residential. REF: 1050634

22 College Approach,
Greenwich, SE10 9HY

Sales, Lettings & Property Management

Tel: 020 8858 9986

residential.jll.co.uk

