



Royal Court House, London SW1X

Price £1,095 per week - Furnished





Description

A lovely fourth floor flat (with lift) in this handsome period building in the heart of Knightsbridge. The property consists of master bedroom with en suite bathroom, second double bedroom, a further bathroom, reception room and a fully fitted kitchen.

This stunning flat is presented in excellent order throughout and further benefits from wooden flooring in the reception room and 24 hour porter. Royal Court House is conveniently located on Sloane Street and benefits from all the amenities of Knightsbridge and surrounding areas.

As well as paying the rent, you may also be required to make some additional permitted payments. If your tenancy does not qualify as an AST, additional fees may apply. Please visit jll.co.uk/fees for details of fees which may be payable when renting a property.

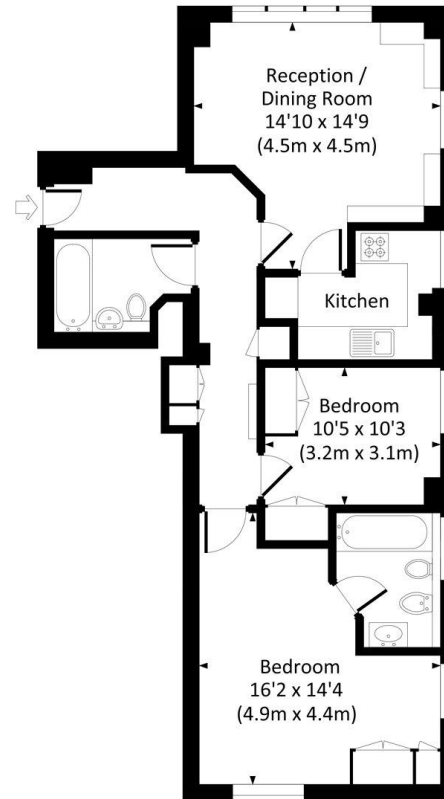
- 2 Double bedrooms
- 2 Bathrooms (1 en suite)
- Reception room
- Fully fitted kitchen
- Fourth floor
- Lift
- 24 Hour porter
- Approx. 748 sq ft (69 sq m)
- Furnished
- EPC: C




Floorplan

sq ft | sq m

Approx. gross internal area
748 Sq Ft. / 69.5 Sq M.



FOURTH FLOOR

 All measurements have been made in accordance with RICS code of Measuring Practice which are approximate only and only for illustrative purposes. For the avoidance of doubt, Dowling Jones Design shall not be liable for any reliance on these measurements. © 2018 www.dowlingjones.com 020 7610 9933

Knightsbridge
Wood Wharf,
London E14 5GX
+4420 7306 1600
lettingsknightsbridge@eu.jll.co

Urban living, your way.

jll.co.uk/residential

© 2019 Jones Lang LaSalle IP, Inc. All rights reserved. All information contained herein is from sources deemed reliable; however, no representation or warranty is made to the accuracy thereof.

