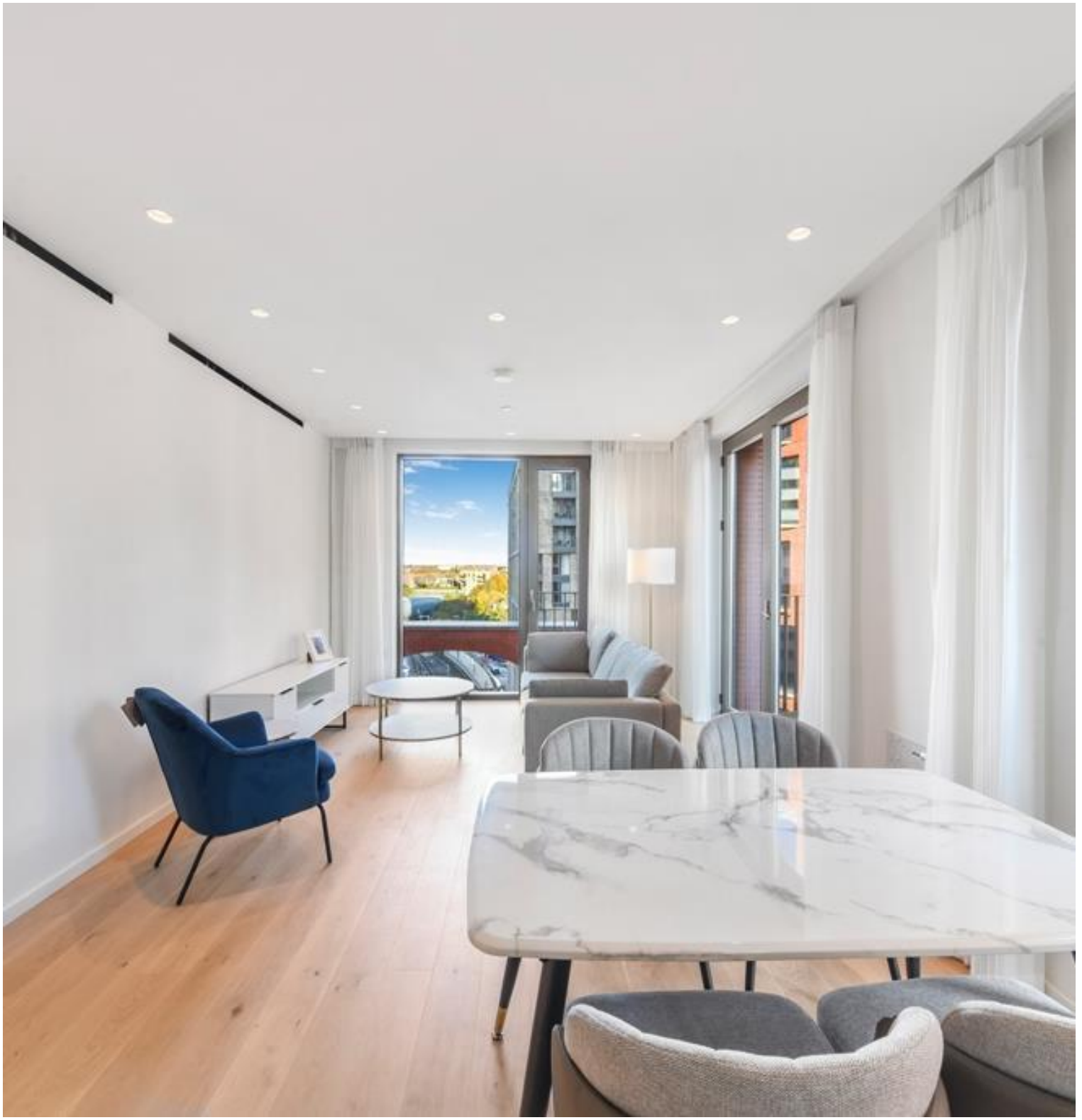
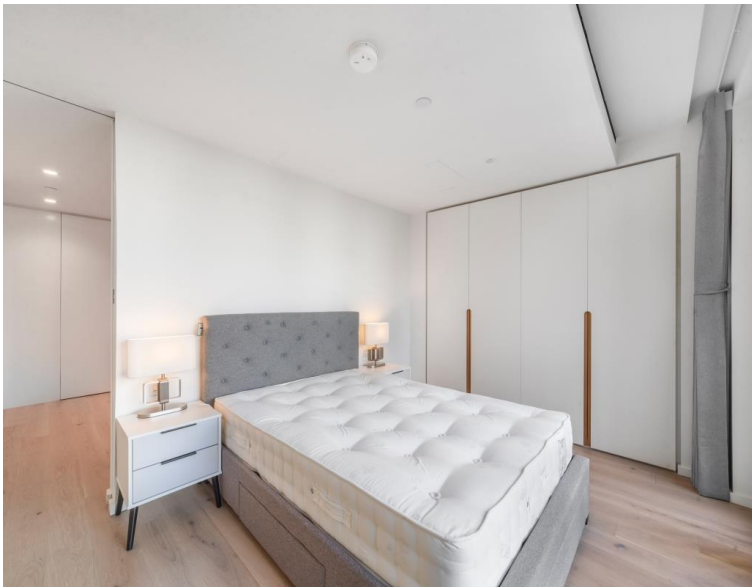


Lewis Cubitt Walk, London N1C

Price £695 per week - Furnished







Description

A brand new 1 bedroom apartment in the uniquely designed Cadence Court, situated in the sought after area of the vibrant Kings Cross.

This stunning 1 bedroom apartment is situated on the 6th floor and boasts 593sq ft of space, with 1 double bedroom with fitted wardrobes and a luxury bathroom, capacious reception with large balcony, fully fitted kitchen with Siemens appliances and wooden flooring throughout. The apartment is offered fully furnished with a high-end furniture package.

The development benefits from 24 hour concierge, resident's lounge and a 10th floor roof terrace with far reaching views across London. King Cross is fast becoming one of the most sought after areas of London with an array of bars, shops, restaurants and offices. Cadence is approximately 0.6 miles from St Pancras International and Kings Cross station.

We understand that cooling / heating is delivered via a communal system for which separate charges apply.

As well as paying the rent, you may also be required to make some additional permitted payments. If your tenancy does not qualify as an AST, additional fees may apply.

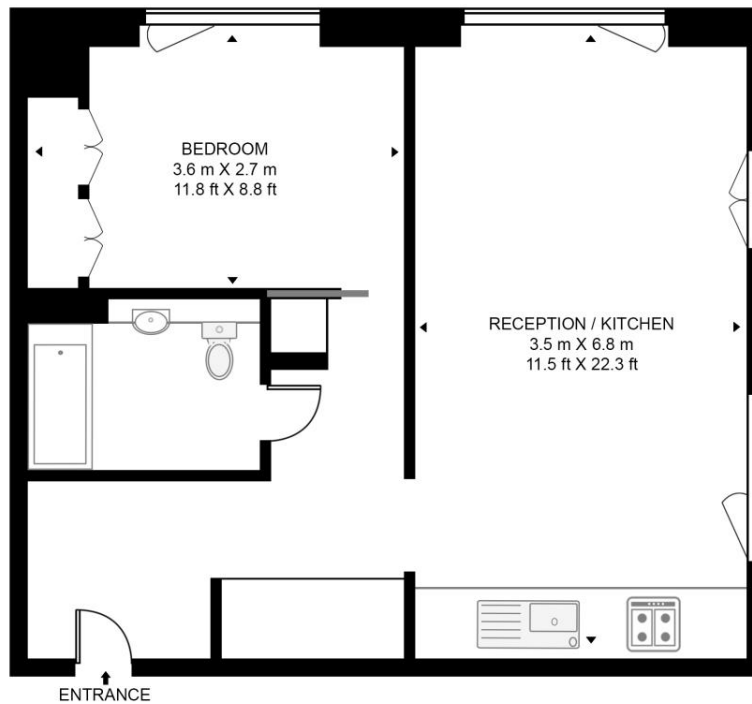
- One double bedroom
- Reception room
- Fully fitted kitchen
- Luxury bathroom
- High-end furniture package
- Balcony
- 6th Floor
- 24 hour concierge
- EPC:B
- Approx: 593 sq ft (55 sq m)

Floorplan

593 sq ft | 55 sq m

CADENCE LEWIS CUBITT SQUARE

APPROXIMATE GROSS INTERNAL FLOOR AREA 592 SQ.FT (55 SQ.M)



This floor plan has been defined by the RICS Code of Measurement. This floor plan and all others are for approximate representative purposes only and upon usage is agreed to as such by the client.
WWW: hdvirtualart.com | TEL: 0203.974.1567 | EMAIL: info@hdvirtualart.com

City
25 Walbrook The Walbrook
Building,
London EC4N 8AF
+4420 7337 4000

Urban living, your way.

jll.co.uk/residential

© 2019 Jones Lang LaSalle IP, Inc. All rights reserved. All information contained herein is from sources deemed reliable; however, no representation or warranty is made to the accuracy thereof.

