



Dacre Street, London SW1H

Price £1,384 per week - Unfurnished





Description

This one bedroom apartment offers a contemporary interior living space which is flooded with natural light through the unique diamond window frame. The kitchen is designed with integrated Gaggenau and Miele appliances as well as Bardiglio Italian marble worktop finishes. The bathroom features an Italian marble finish, and Corian bath and basin. Additionally, there are communal gardens connecting each tower on the fourth floor that each resident has access to. The apartment can come on a furnished / unfurnished basis and will be professionally managed by JLL for the duration of any tenancy.

The development benefits from a number of resident facilities as well as a spa which offers two wellness and treatment rooms, a 25m heated indoor pool, a vitality pool, steam room, sauna, gym, personal training studio and changing facilities. Underground parking is available for select apartments by separate negotiation.

The Broadway is a luxury collection of apartments located in the historic Westminster borough, and provides unrivalled views towards The Houses of Parliament, Westminster Abbey, Big Ben and Buckingham Palace. The Broadway embodies all of the hallmarks of a world-class development. St James's Park underground station and Victoria Station are nearby and the open spaces of The Green Park and St James's Park are a 5 minute walk away.

As well as paying the rent, you may also be required to make some additional permitted payments. If your tenancy does not qualify as an AST, additional fees may apply. Please visit jll.co.uk/fees for details of fees which may be payable when renting a property.

- 24-hour concierge
- Gym
- Pool/Sauna/Steam room
- Communal gardens
- Italian marble countertop finishes
- Underfloor heating and comfort cooling



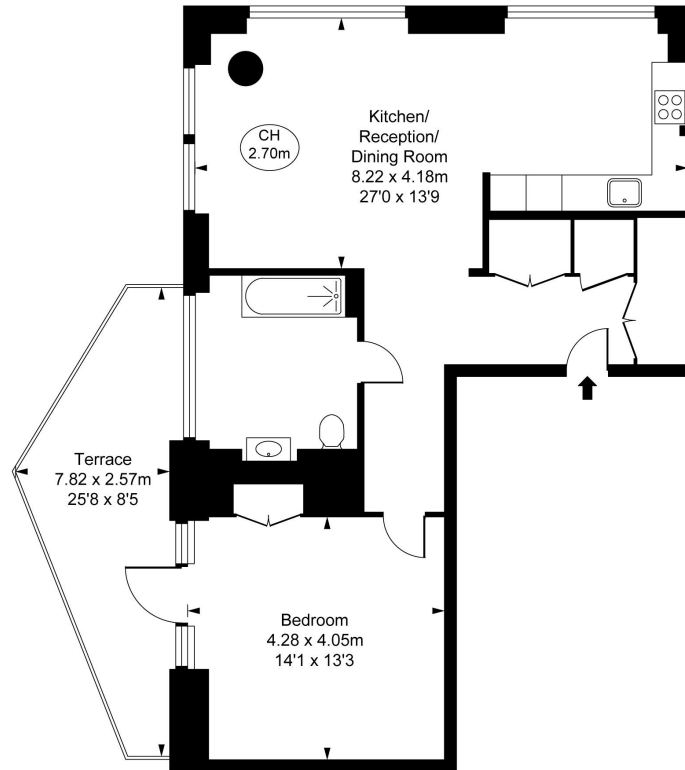
Floorplan

sq ft | sq m

The Broadway,
Dacre Street, SW1H
Approximate Gross Internal Area
73.01 sq m / 786 sq ft



(CH = Ceiling Heights)



Fourth Floor

This plan is not to scale. It is for guidance and not for valuation purposes.
All measurements and areas are approximate only, and have been prepared in accordance with the current edition of the RICS Code of Measuring Practice.
© Fulham Performance

Knightsbridge
Wood Wharf,
London E14 5GX
+4420 7306 1600
lettingsknightsbridge@eu.jll.co

Urban living, your way.

jll.co.uk/residential

© 2019 Jones Lang LaSalle IP, Inc. All rights reserved. All information contained herein is from sources deemed reliable; however, no representation or warranty is made to the accuracy thereof.

