



Ram Street, London SW18

Asking price £775,000 Leasehold







Description

A beautifully appointed two bedroom apartment, showcasing a harmonious blend of modern design and spacious living.

The open-plan kitchen reception room features elegant wooden floors and upwards extended windows creating a light, warm and inviting atmosphere. The primary bedroom features built-in wardrobes and an en-suite shower room, while there is a second bedroom and a contemporary bathroom. In addition with its seamless connection to the indoor living space, the balcony enhances the overall appeal of the property, providing a serene and private outdoor retreat.

Ideally located just minutes away from Wandsworth Town station and within a mile of East Putney tube station and surrounded by a vibrant neighbourhood, including the bustling Old York Road with its trendy bars and restaurants, the Southside shopping centre, Wandsworth Park, and the serene riverside, this apartment offers a refined and vibrant lifestyle within the confines of this sophisticated home.

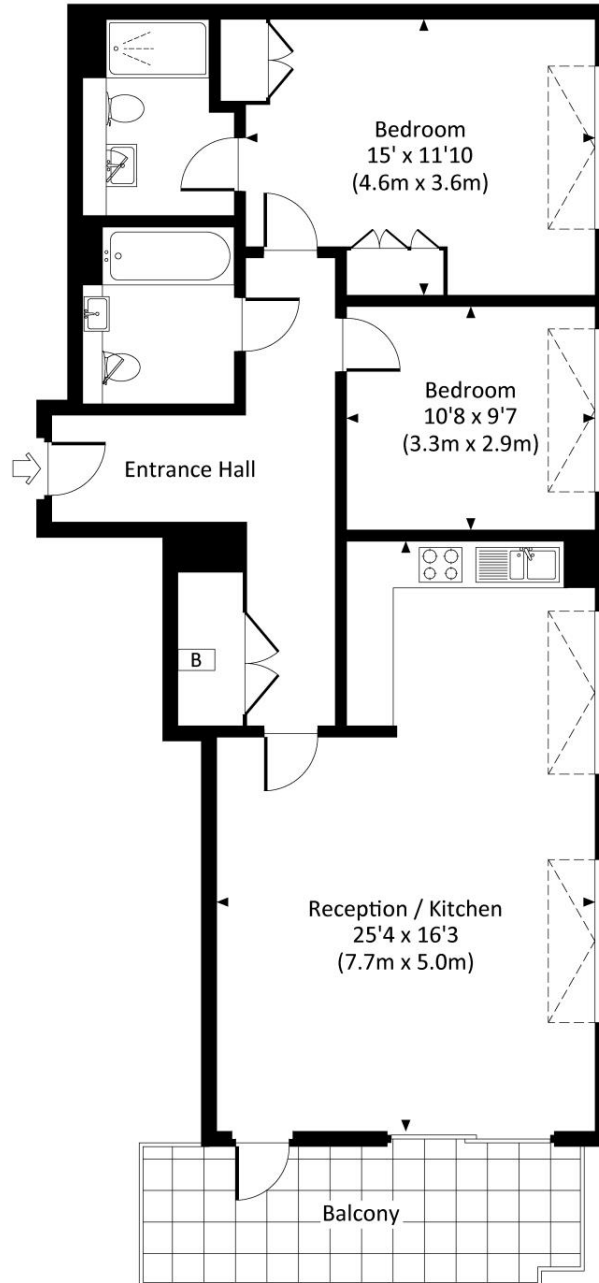
- 2 Bedrooms
- 2 Bathrooms
- Private balcony
- Underground parking
- Wandsworth Town
- Concierge
- 10 years builder's warranty
- 922 sq ft (86 sq m)
- EPC:B

Floorplan

922 sq ft | 86 sq m

LANGRIDGE HOUSE, THE RAM QUARTER, RAM STREET,
WANDSWORTH, SW18

Approx. gross internal area
922 Sq Ft. / 85.7 Sq M.



All measurements are approximate and for guidance and illustrative purposes only.
Photography and Floor Plans by www.rayco.london - +44 7793 974 209

Nine Elms
4 Riverlight Quay,
London SW11 8DG
+4420 3147 1333
salesnineelms@eu.jll.com

Urban living, your way.

jll.co.uk/residential

© 2019 Jones Lang LaSalle IP, Inc. All rights reserved. All information contained herein is from sources deemed reliable; however, no representation or warranty is made to the accuracy thereof.

