



Endeavour House, Marine Wharf, Rotherhithe Street, London SE16



Endeavour House, Marine Wharf, SE16

Leasehold

A gorgeous two bedroom, two bathroom apartment located on the 3rd floor of the prestigious Marine Wharf development.

Key Features

- 2 Bedrooms
- 2 Bathrooms
- Balcony
- Unallocated parking
- 24 Hour concierge
- On-site leisure facilities
- Surrey Quays Overground
- EPC: B

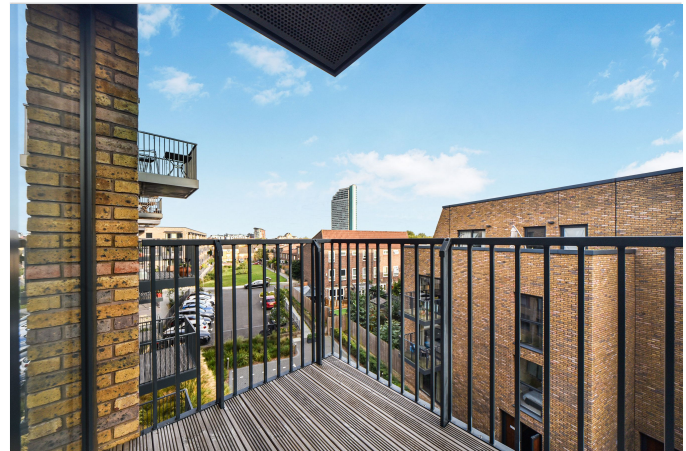
Just a 10-minute walk away, providing fast connections to key destinations including Canada Water, London Bridge and future Crossrail destination, Canary Wharf.

Development offers its residents exclusive access to their own fitness and leisure suite and the benefit of a 24 hr concierge.

Surrey Quays is positioned around the Greenland and South Docks, ensuring that residents will experience the very best tranquil marina life has to offer, whilst still being within close proximity to the London Bridge Quarter, the West End and East London.

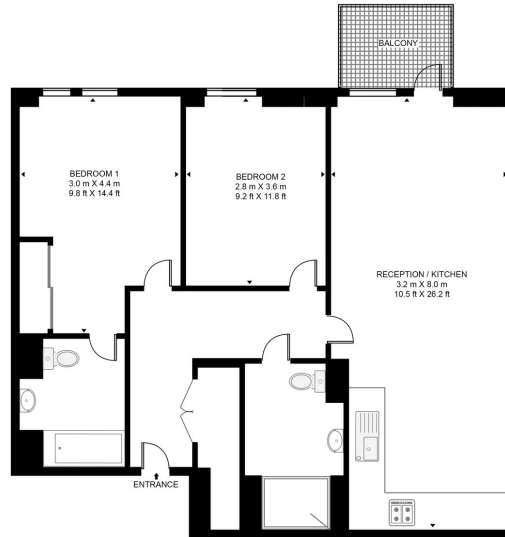








ENDEAVOUR HOUSE
APPROXIMATE GROSS INTERNAL FLOOR AREA 740 SQ.FT (68.8 SQ.M)



THIRD FLOOR

HDVA | This floor plan has been defined by the RICS Code of Measurement. This floor plan and all others are for approximate representative purposes only and upon usage is agreed to as such by the client.
WWW: hdvirtualart.com | TEL: 0203 974 1567 | EMAIL: info@hdvirtualart.com

22 College Approach,
Greenwich, SE10 9HY

Sales, Lettings & Property Management

Tel: 020 8858 9986

residential.jll.co.uk

