



Knightsbridge, London SW1X

Price £2,500 per week - Unfurnished







Description

An incredibly spacious apartment available in very well-run portered building in Knightsbridge, with wonderful views of Hyde Park. This stunning apartment comprises two reception rooms, three spacious bedrooms, three bathrooms (one en-suite), a modern kitchen with state-of-the-art appliances and also a utility and storage room.

As well as paying the rent, you may also be required to make some additional permitted payments. If your tenancy does not qualify as an AST, additional fees may apply. Please visit jll.co.uk/fees for details of fees which may be payable when renting a property.

- 3 bedrooms
- 3 bathrooms (one en-suite)
- 2 receptions
- Modern kitchen
- Storage/utility room
- Portered
- Unfurnished
- EPC: TBC

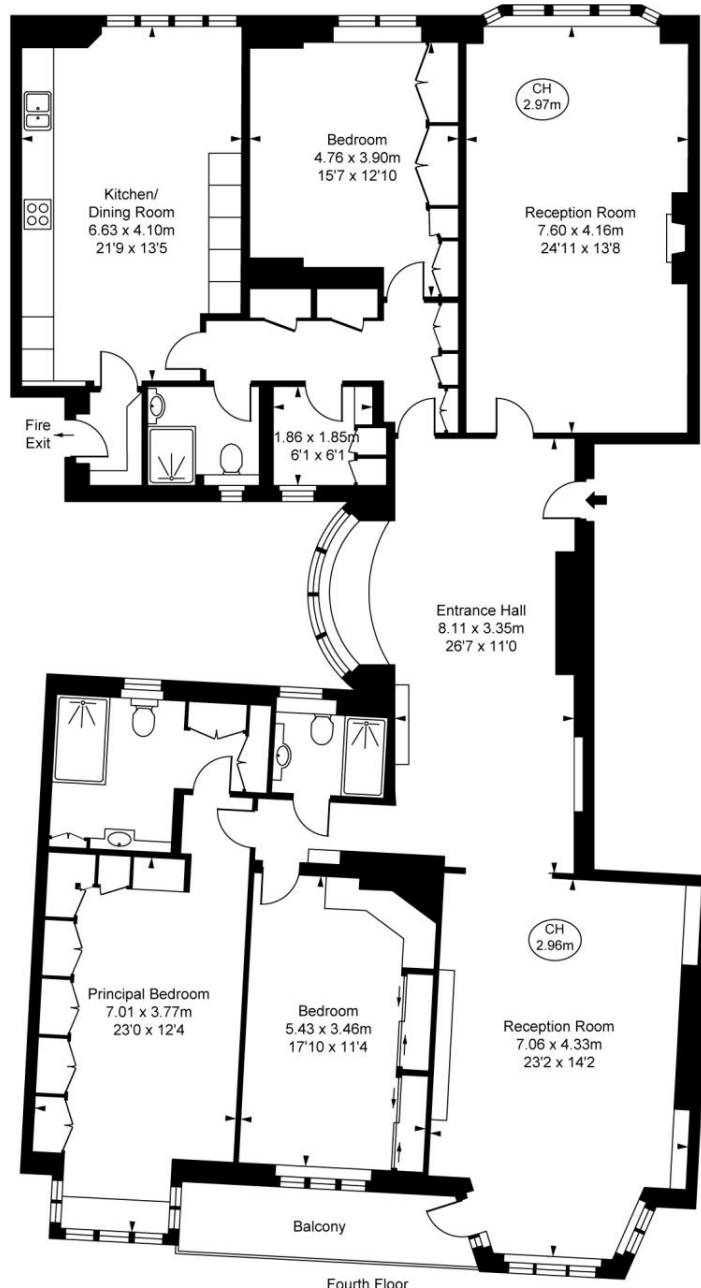
Floorplan

sq ft | sq m

Parkside Apartments, SW1X

Approximate Gross Internal Area
222.19 sq m / 2,392 sq ft

(CH = Ceiling Heights)



This plan is not to scale. It is for guidance and not for valuation purposes.
All measurements and areas are approximate only, and have been prepared in accordance with the current edition of the RICS Code of Measuring Practice.
© Fulham Performance

Knightsbridge
Wood Wharf,
London E14 5GX
+4420 7306 1600
lettingsknightsbridge@eu.jll.co

Urban living, your way.

jll.co.uk/residential

© 2019 Jones Lang LaSalle IP, Inc. All rights reserved. All information contained herein is from sources deemed reliable; however, no representation or warranty is made to the accuracy thereof.

