



## Sidney Street, London E1

Price £645 per week - Furnished









## Description

A double aspect 2 bedroom apartment in Georgette Apartments, part of the sought after Silk District, E1, well connect for the City of London.

Offered fully furnished, this spacious 2 bedroom apartment is situated on the 5th floor and comprises a large open plan living / dining area, private balcony overlooking the courtyard, 2 double bedrooms with fitted wardrobes to master, 2 luxury bathrooms, fully fitted kitchen with Oak effect finish, tiled flooring and excellent storage space.

The Silk District is a development from Mount Anvil and offers residents fantastic amenities which include 24 hour concierge, on site gym, cinema room, rooftop gardens and resident's lounge. The development is within easy reach of the City of London and in the heart of the Whitechapel regeneration area, approximately 0.3 miles from Whitechapel Underground / Crossrail station.

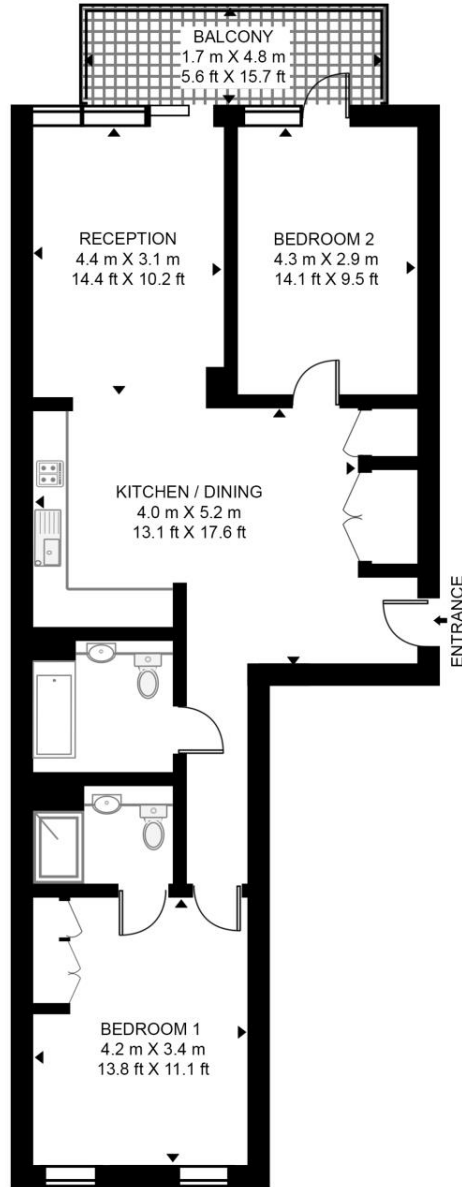
As well as paying the rent, you may also be required to make the following permitted payments. If your tenancy does not qualify as an AST, additional fees may apply. Please visit [jll.co.uk/fees](http://jll.co.uk/fees) for details of fees which may be payable when renting a property.

- 2 Bedrooms
- 2 Bathrooms
- 5th Floor
- Private Balcony
- On-site amenities including cinema, gym and resident's lounge
- 24 hour concierge
- 0.3 miles from Whitechapel Station
- Approx. 839 sq ft (78 sq m)
- Furnished
- EPC: B

# Floorplan

839 sq ft | 78 sq m

## GEORGETTE APARTMENTS, SILK DISTRICT APPROXIMATE GROSS INTERNAL FLOOR AREA 839 SQ.FT (78 SQ.M)



**HDVA**

This floor plan has been defined by the RICS Code of Measurement. This floor plan and all others are for approximate representative purposes only and upon usage is agreed to as such by the client.

WWW: [hdvirtualart.com](http://hdvirtualart.com) | TEL: 0203.974.1567 | EMAIL: [info@hdvirtualart.com](mailto:info@hdvirtualart.com)

City  
25 Walbrook The Walbrook  
Building,  
London EC4N 8AF  
+4420 7337 4000

*Urban living, your way.*

[jll.co.uk/residential](http://jll.co.uk/residential)

© 2019 Jones Lang LaSalle IP, Inc. All rights reserved. All information contained herein is from sources deemed reliable; however, no representation or warranty is made to the accuracy thereof.

