



South Street, London W1K

Price £30,000 per month - Furnished







Description

This beautiful Georgian House is located in the heart of Mayfair and would make a superb family home.

The house measures approx. 3,179sqft / 295sqm and is arranged over five floors combining period features with classical furnishings and modern appliances throughout.

The property boasts excellent living and entertaining space, with two reception rooms on the ground and first floors, as well as an open plan kitchen and dining room which leads out into the secure shared gardens.

The lower ground floors consist of a double bedroom with bathroom and a sauna. The principal bedroom is situated on the first floor with a large en suite bathroom and built-in storage; there are three further bedrooms with en suite bathrooms on the second and third floors.

Furthermore, a wonderful spacious terrace area overlooks the beautiful secure shared gardens and there is a parking available in a secure underground car park approximately 100 yards from the house.

Rent is payable on a monthly basis and you may be required to pay more than a month's rent in advance, depending on your ci

- Grade II Listed Townhouse
- Approx. 3,179sqft (295sqm)
- Secure Communal Gardens
- Secure Underground Parking
- Private terrace overlooking communal gardens
- Two reception rooms
- Spacious kitchen and dining area
- Four further double bedrooms (three with en suite bathrooms)
- Sauna
- Furnished

Floorplan

3,309 sq ft | 307 sq m

South Street, W1K

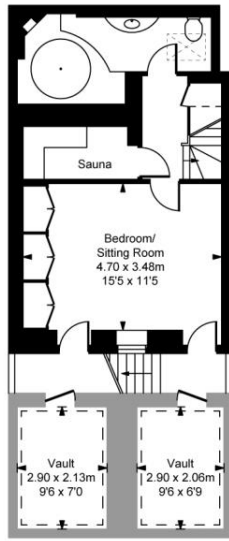
Approximate Gross Internal Area
 295.33 sq m / 3,179 sq ft

Vault
 12.10 sq m / 130 sq ft

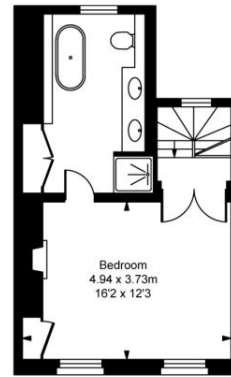
Total Areas Shown On Plan
307.43 sq m / 3,309 sq ft

(Including restricted height under 1.5m)

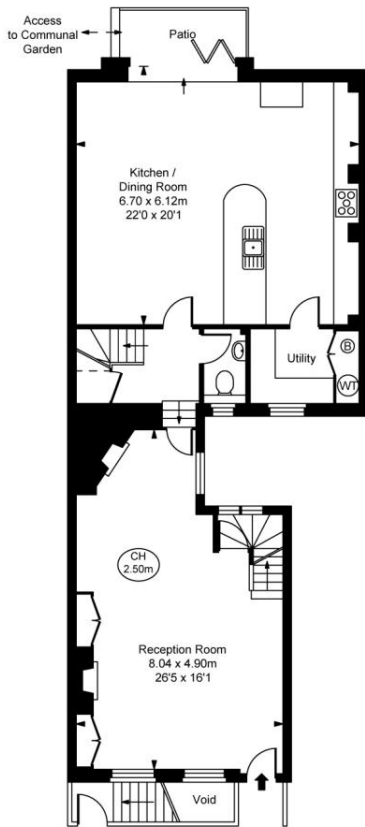
(CH = Ceiling Heights)



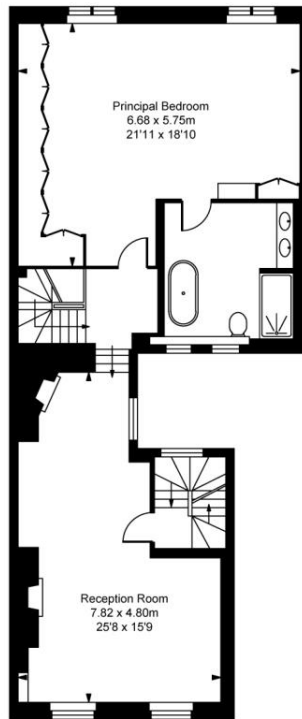
Lower Ground Floor
Approximate Gross Internal Area
35.51 sq m / 382 sq ft



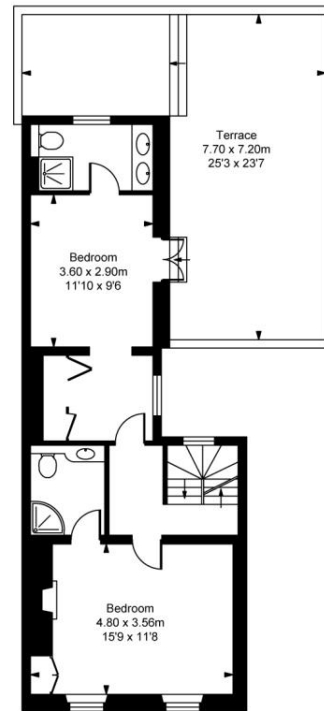
Third Floor
Approximate Gross Internal Area
34.63 sq m / 373 sq ft



Ground Floor
Approximate Gross Internal Area
89.14 sq m / 960 sq ft



First Floor
Approximate Gross Internal Area
85.22 sq m / 917 sq ft



Second Floor
Approximate Gross Internal Area
50.83 sq m / 547 sq ft

This plan is not to scale. It is for guidance and not for valuation purposes.
All measurements and areas are approximate only, and have been prepared in accordance with the current edition of the RICS Code of Measuring Practice.
© Fulham Performance

Mayfair and Marylebone
 13a St George Street,
 London W1S 2FQ
 +44 207 399 5550
 mayfair@jll.com

Urban living, your way.

jll.co.uk/residential

© 2019 Jones Lang LaSalle IP, Inc. All rights reserved. All information contained herein is from sources deemed reliable; however, no representation or warranty is made to the accuracy thereof.

