



## Brompton Road, London SW3

Price £1,395 per week - Unfurnished









## Description

A wonderful three bedroom apartment (no lift) on the vibrant Brompton Road offering neutral décor and high ceilings throughout. The property consists of three bedrooms, one bathroom, guest cloakroom, two reception rooms and a fully fitted kitchen. The building also benefits from close proximity to both South Kensington and Knightsbridge Tube Stations.

As well as paying the rent, you may also be required to make some additional permitted payments. If your tenancy does not qualify as an AST, additional fees may apply. Please visit [jll.co.uk/fees](http://jll.co.uk/fees) for details of fees which may be payable when renting a property.

- Three bedrooms
- Two reception rooms/extra bedroom
- Kitchen
- Bathroom
- Guest cloakroom
- Unfurnished
- Third and fourth floor
- Approx. 1650 sq ft (153 sq m)
- EPC: C

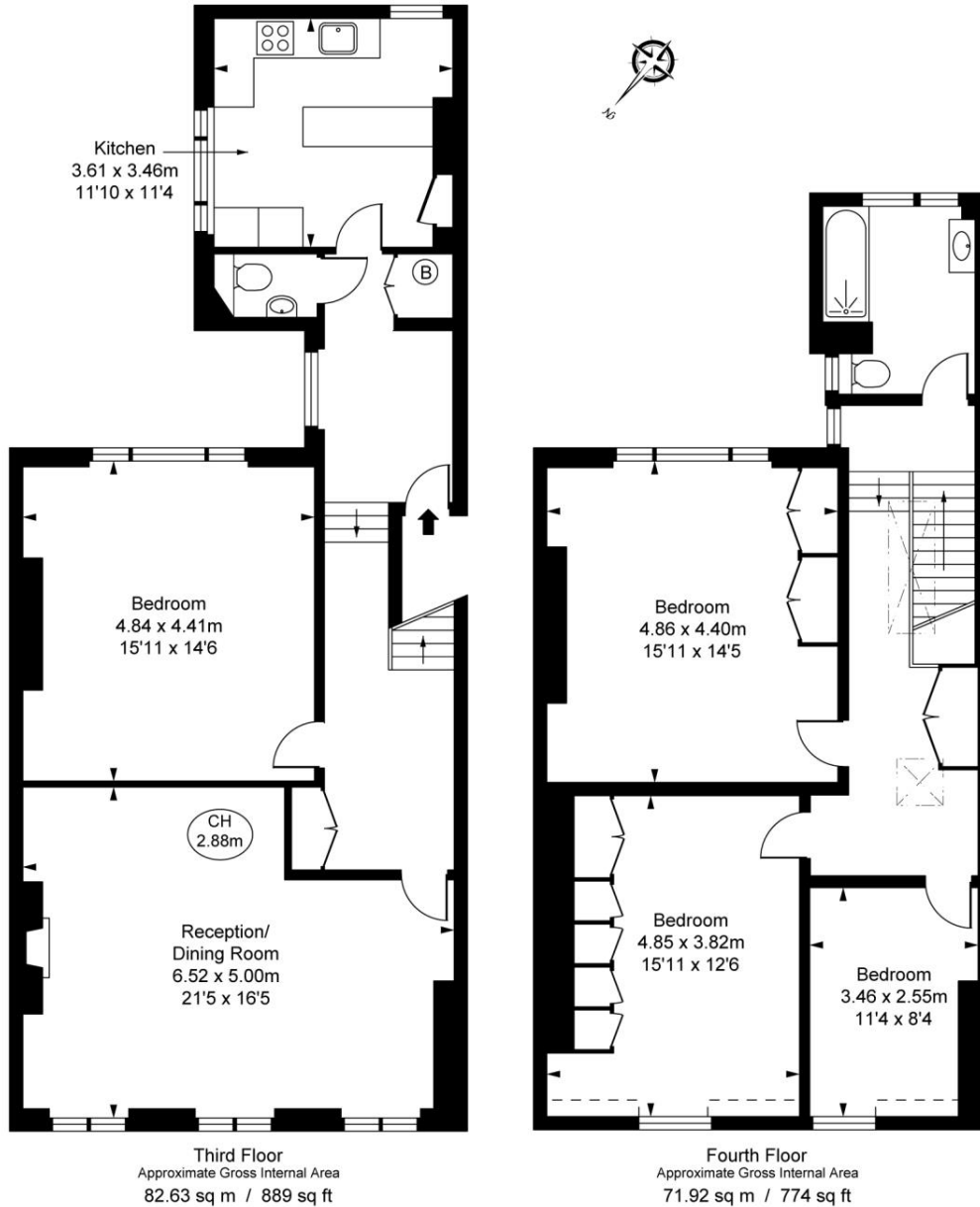
# Floorplan

sq ft | sq m

Brompton Road, SW3  
Approximate Gross Internal Area  
154.55 sq m / 1,664 sq ft

( Including restricted height  
under 1.5m (-----) )

( CH = Ceiling Heights )



This plan is not to scale. It is for guidance and not for valuation purposes.  
All measurements and areas are approximate only, and have been prepared in accordance with the current edition of the RICS Code of Measuring Practice.  
© Fulham Performance

Knightsbridge  
Wood Wharf,  
London E14 5GX  
+4420 7306 1600  
lettingsknightsbridge@eu.jll.co

*Urban living, your way.*

[jll.co.uk/residential](http://jll.co.uk/residential)

© 2019 Jones Lang LaSalle IP, Inc. All rights reserved. All information contained herein is from sources deemed reliable; however, no representation or warranty is made to the accuracy thereof.

