



High Street, London E15

Asking price £350,000 Leasehold







Description

This 8th floor ultra modern one double bedroom apartment is located in one of Stratford's most sought after developments River Heights E15 boasting residents gym, roof terrace and 24hr concierge service. River heights is just a short walk from the amenities Westfield has to offer and also Stratford underground station for links across London.

The property comprises of a spacious living room with large balcony offering panoramic views of towards the Olympic park and stadium, Modern high gloss kitchen with integrated appliances, large double bedroom with built in storage and modern bathroom.

The property also benefits from air conditioning and superb far reaching views. Residents further benefit from concierge and a residential gym.

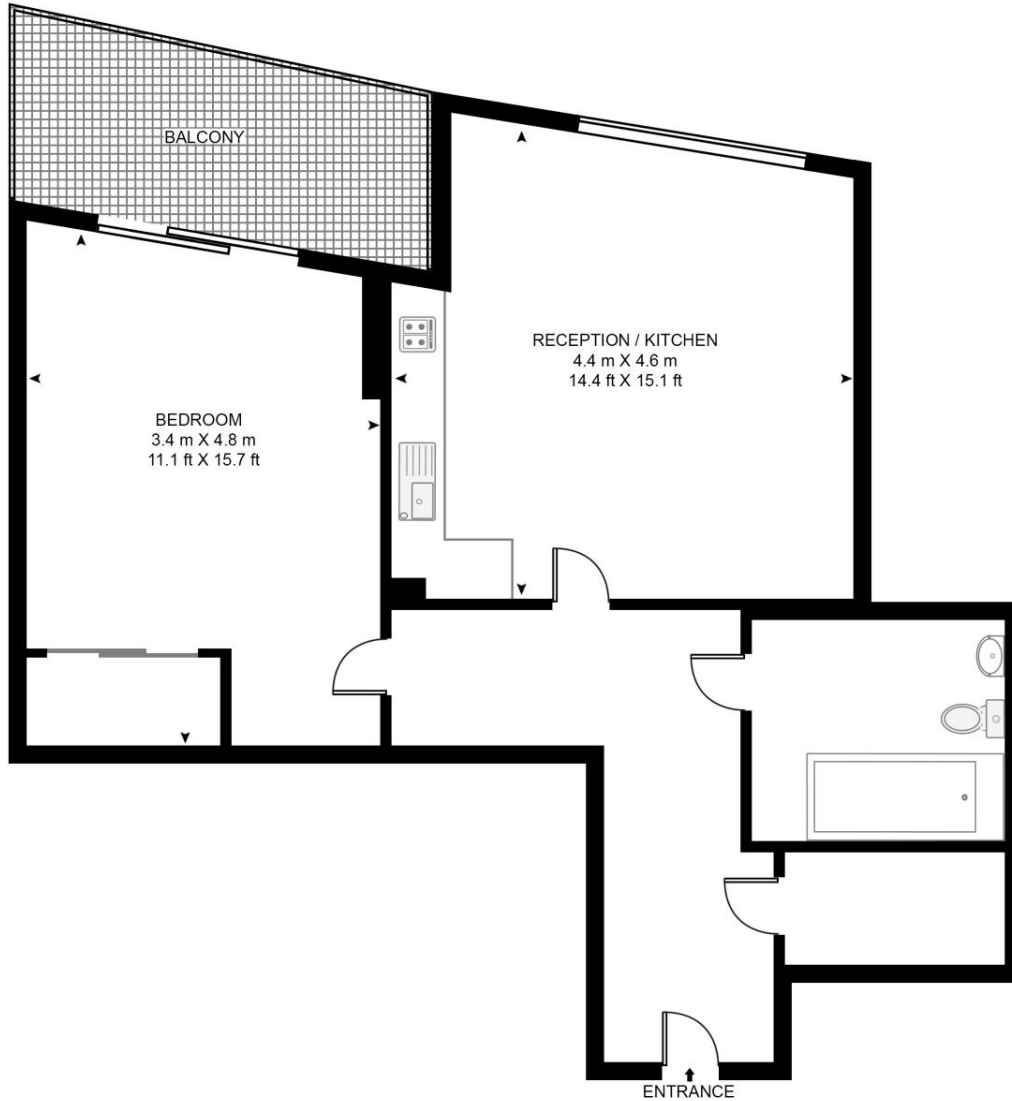
- 1 Bedroom
- 1 Bathroom
- Modern Secure Development
- 8th Floor
- Fantastic views towards the Olympic Park
- 24hr Concierge
- Residential Gym
- 0.4 mile from Pudding Mill Lane DLR Station
- Approx 536 sq ft (49.8 sq m)
- Leasehold

Floorplan

536 sq ft | 50 sq m

RIVER HEIGHTS

APPROXIMATE GROSS INTERNAL FLOOR AREA 536 SQ.FT (49.8 SQ.M)



EIGHTH FLOOR



This floor plan has been defined by the RICS Code of Measurement. This floor plan and all others are for approximate representative purposes only and upon usage is agreed to as such by the client.
WWW: hdvirtualart.com | TEL: 0203.974.1567 | EMAIL: info@hdvirtualart.com

Stratford
5 Station Street,
London E15 1DA
+4420 3147 1500
salesstratford@eu.jll.com

Urban living, your way.

jll.co.uk/residential

© 2019 Jones Lang LaSalle IP, Inc. All rights reserved. All information contained herein is from sources deemed reliable; however, no representation or warranty is made to the accuracy thereof.

