



## Exhibition Road, London SW7

Price £725 per week - Furnished



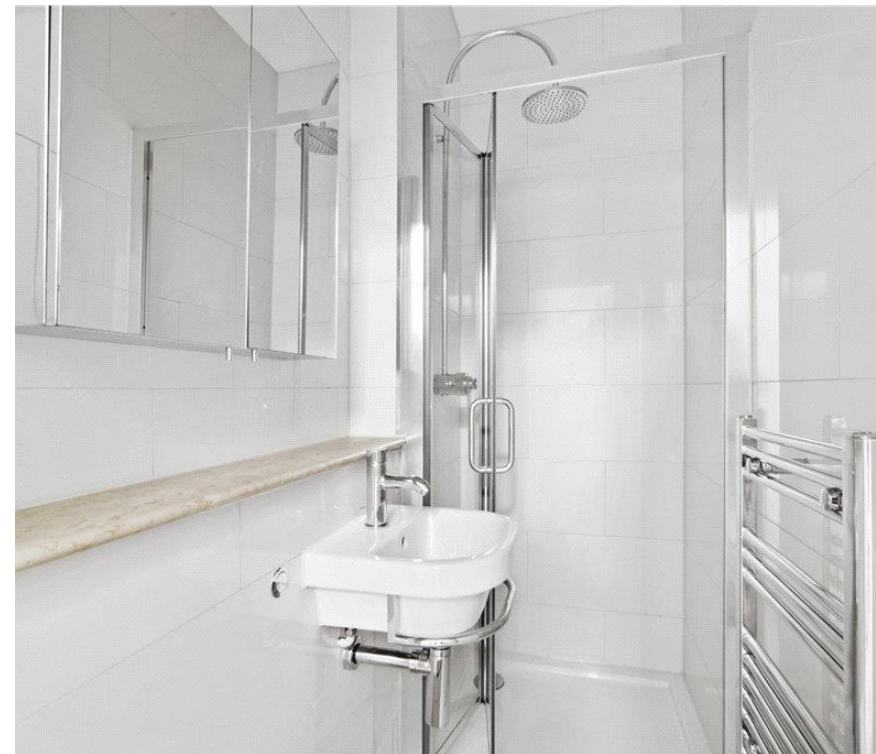


# Description

A bright and spacious third and fourth floor flat (no lift) in this period building in South Kensington. The property consists of one bedroom, a study or walk in wardrobe, one shower room, reception room and a fully fitted, open plan kitchen. Exhibition Road is conveniently located for the many shopping and transport amenities of South Kensington and Knightsbridge.

As well as paying the rent, you may also be required to make some additional permitted payments. If your tenancy does not qualify as an AST, additional fees may apply. Please visit [jll.co.uk/fees](http://jll.co.uk/fees) for details of fees which may be payable when renting a property.

- 1 Double bedroom
- Study / walk in wardrobe area
- 1 Shower room
- Reception room
- Open plan kitchen
- Third and fourth floor
- Approx. 749 sq ft / 69 sq m
- Unfurnished
- EPC: D



# Floorplan

sq ft | sq m

Approx. gross internal area  
746 Sq.Ft. / 69.3 Sq.M.  
790 Sq.Ft. / 73.4 Sq.M. Inc. Restricted Height Area



© 2015 All measurements have been made in accordance with BICs Code of Measuring Practice which are approximate only and only for illustrative purposes. For the avoidance of doubt, Dowling Jones Design shall not be liable for any reliance on these measurements. © 2015 www.dowlingjones.com 020 7510 9933

Knightsbridge  
Wood Wharf,  
London E14 5GX  
+4420 7306 1600  
lettingsknightsbridge@eu.jll.co

*Urban living, your way.*

[jll.co.uk/residential](http://jll.co.uk/residential)

© 2019 Jones Lang LaSalle IP, Inc. All rights reserved. All information contained herein is from sources deemed reliable; however, no representation or warranty is made to the accuracy thereof.

