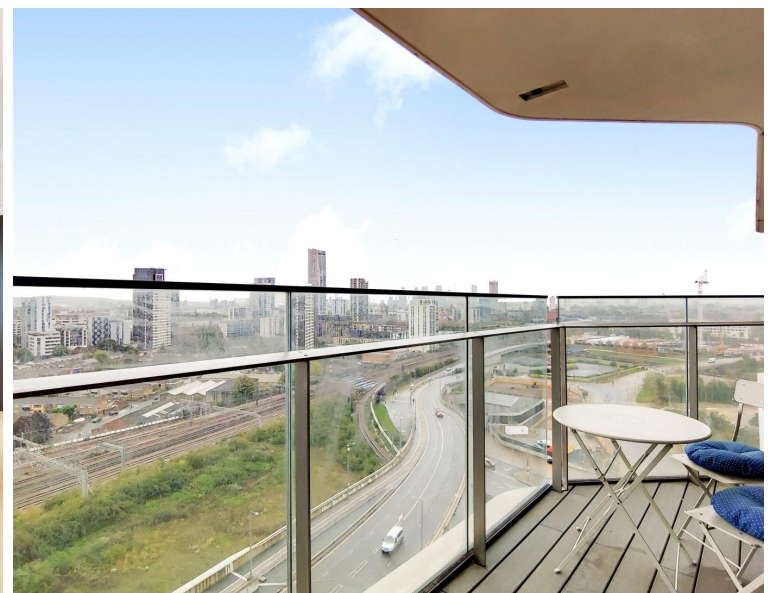
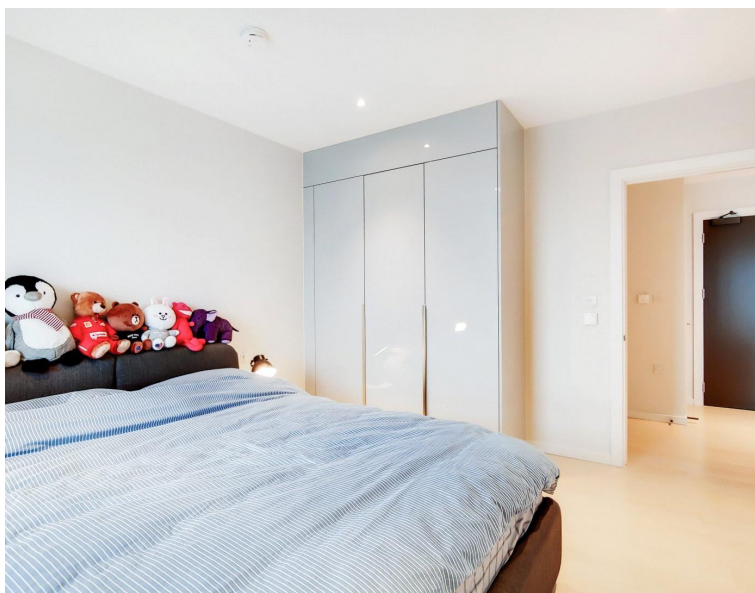
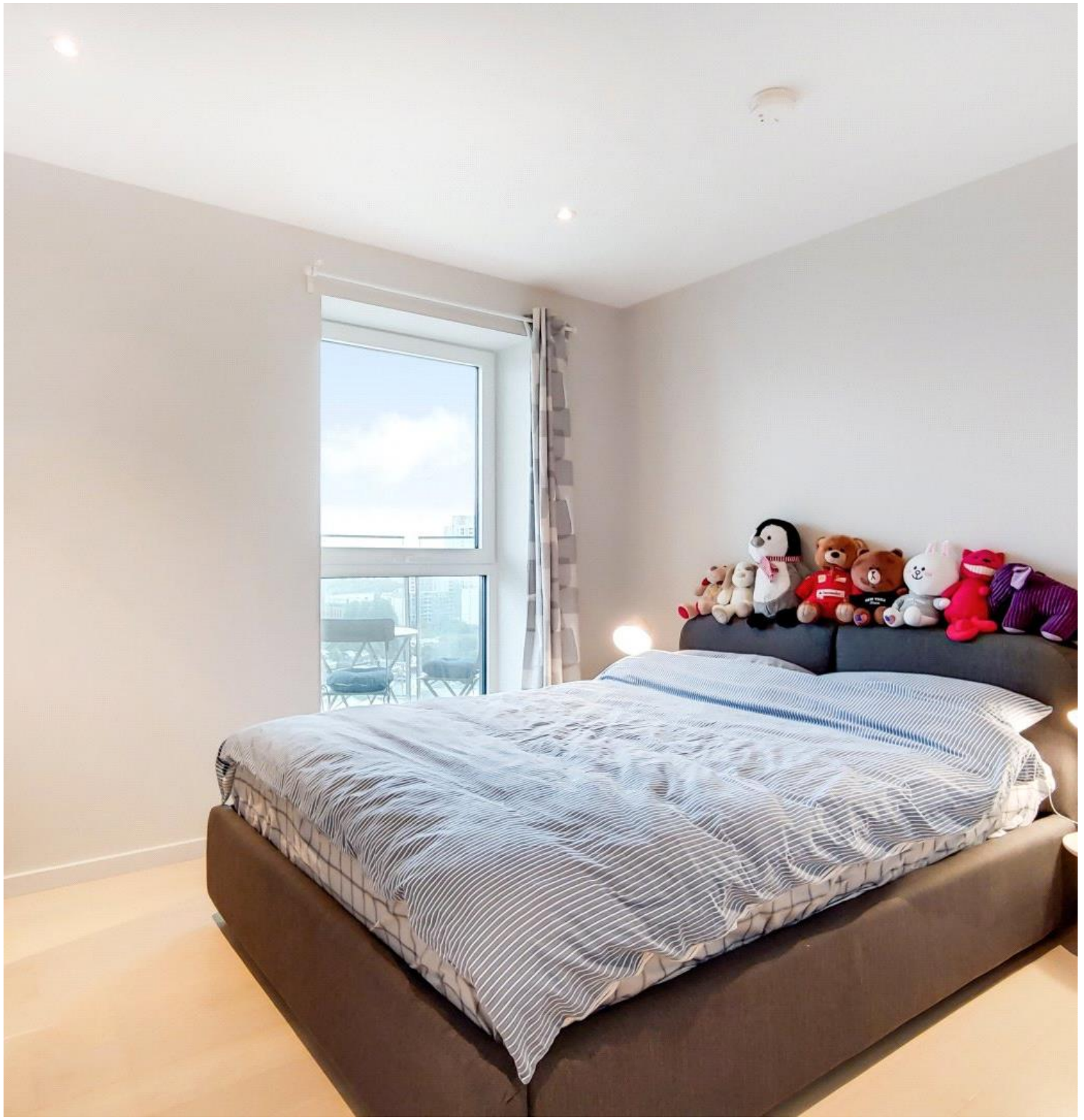


Glasshouse Gardens, London E20

Asking price £495,000 Leasehold







Description

This spacious one bedroom apartment is located on the 12th floor of Stratford City's most sought after developments. The apartment has fantastic views across the Olympic Park and located in the popular Glasshouse Gardens development offering a 24 hour concierge, residents gym and just a short walk from Stratford underground station for a short commute to the City and Canary Wharf.

Property comprises of a spacious living room with space for dining, door leading to balcony. Modern fitted kitchen with integrated Bosch appliances and grey high gloss units. Large bedroom with grey high gloss built in wardrobes. Luxurious bathroom with mirrored cabinets, rainfall shower and bath.

The development is directly opposite the amenities of Westfield Shopping Centre and a short walk from Stratford Underground Station. Residents further benefit from a concierge service, secure intercom entry, lift access and close to local amenities.

- 12th floor
- 1 bedroom
- Ultra modern throughout
- Concierge service
- Residential gymnasium
- Private balcony
- Views overlooking Olympic landmarks
- Communal landscaped gardens
- Short walk to Stratford Underground Station
- Short walk to Westfield' Stratford City

Floorplan

557 sq ft | 52 sq m



Lantana Heights, E20

CAPTURE DATE
21/10/2019

LASER SCAN POINTS
22,554,410

GROSS INTERNAL AREA
51.8 Sqm / 557.7 Sqft



— Twelfth Floor

 GROSS INTERNAL AREA
The footprint of the property
51.8 Sqm / 557.7 Sqft

 NET AREA (INTERNAL)
Excludes walls and external features
50.1 Sqm / 538.9 Sqft

 EXTERNAL STRUCTURAL FEATURES
Balconies, terraces, verandas etc.
5.7 Sqm / 61.6 Sqft

 RESTRICTED HEAD HEIGHT
Limited use area under 1.5m
0.0 Sqm / 0.0 Sqft



Spec floor plans are produced in accordance with the Royal Institution of Chartered Surveyors' Property Measurement Standards. Plots and gardens are illustrative only and are excluded from all area calculations. Due to rounding, numbers may not add up precisely. All measurements shown for the individual room lengths and widths are the maximum points of measurements captured in the scan.

IPMS 3B RESIDENTIAL
57.5 Sqm / 619.4 Sqft

IPMS 3C RESIDENTIAL
55.8 Sqm / 600.5 Sqft

SPEC ID
5da6efb488486a0a0e8fde2d

Stratford
5 Station Street,
London E15 1DA
+4420 3147 1500
salesstratford@eu.jll.com

Urban living, your way.

jll.co.uk/residential

© 2019 Jones Lang LaSalle IP, Inc. All rights reserved. All information contained herein is from sources deemed reliable; however, no representation or warranty is made to the accuracy thereof.

