



Cumberland Terrace, London NW1

Price £5,000 per month - Furnished







Description

The apartment is located on the edge of The Regents Park and is accessed via the Outer Circle. The apartment has character throughout including parquet flooring, double height ceilings, and a spacious reception room with large sash windows directly overlooking The Regents Park allowing in plenty of natural light. There is a modern separate kitchen, double bedroom with built-in wardrobes and shower room with walk-in shower.

The apartment also has secure parking, 24hr security and daytime porter.

Cumberland Terrace is within walking distance of the neighbouring areas of Fitzrovia, Marylebone and Bloomsbury. Great Portland Street and Regents Park stations are also just a short walk.

Rent is payable on a monthly basis and you may be required to pay more than a month's rent in advance, depending on your circumstances. You will be required to pay a 1 week holding deposit following a successful offer. Utility bills, council tax, telephone line and broadband are not included in the rent. As well as paying the rent, you may also be required to make some additional permitted payments. If your tenancy does not qualify as an AST, additional fees may apply. Please visit jll.co.uk/fees for details of fees which may be payable when ren

- Short Term Let
- Overlooking The Regents Park
- Balcony
- Period Features
- Spacious Reception Room
- 24hr Security
- Daytime Porter
- Parking
- Council tax: Band G
- Deposit amount: £6,923.07

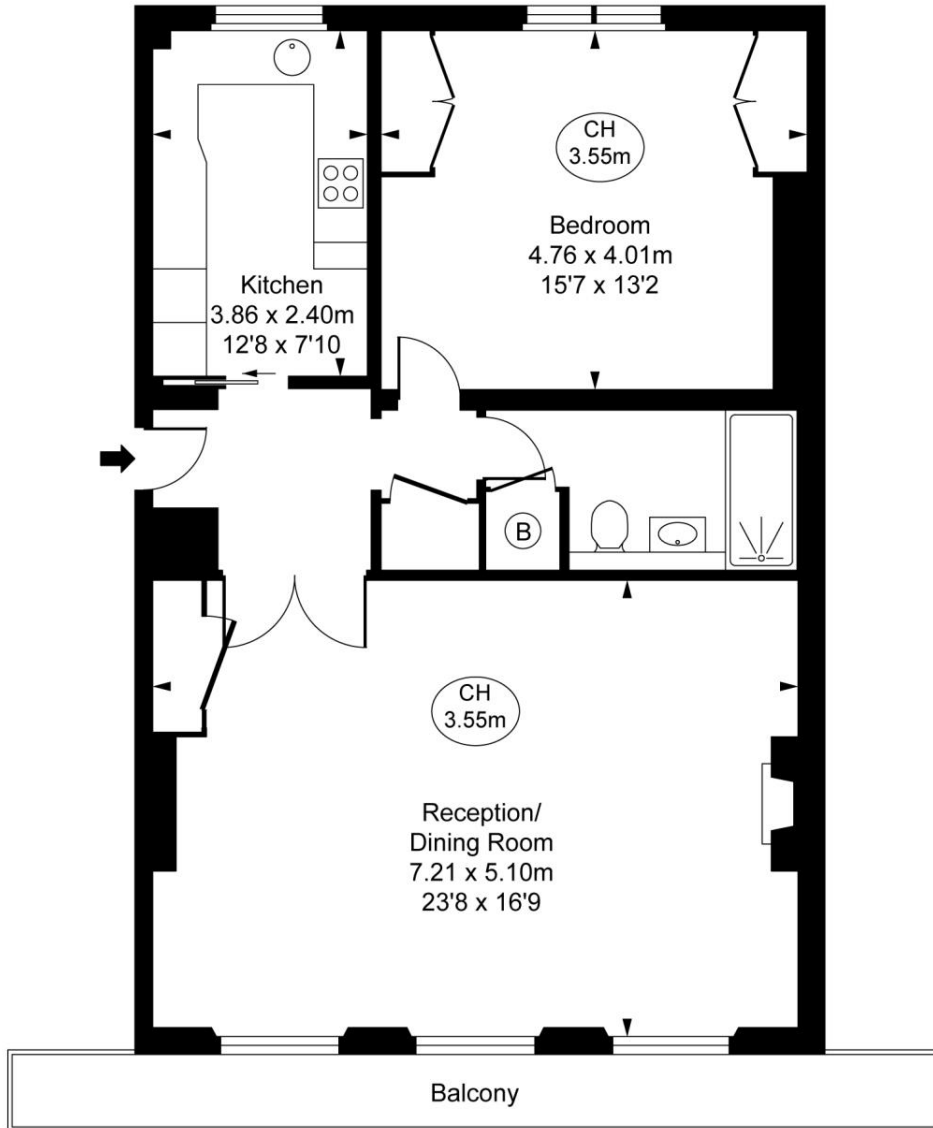
Floorplan

871 sq ft | 81 sq m

Cumberland Terrace, NW1

Approximate Gross Internal Area
80.87 sq m / 871 sq ft

(CH = Ceiling Heights)



First Floor

This plan is not to scale. It is for guidance and not for valuation purposes.
All measurements and areas are approximate only, and have been prepared in accordance with the current edition of the RICS Code of Measuring Practice.
© Fulham Performance

Mayfair and Marylebone
13a St George Street,
London W1S 2FQ
+44 207 399 5550
mayfair@jll.com

Urban living, your way.

jll.co.uk/residential

© 2019 Jones Lang LaSalle IP, Inc. All rights reserved. All information contained herein is from sources deemed reliable; however, no representation or warranty is made to the accuracy thereof.

