



Wyndham Apartments, 60 River Gardens Walk, Greenwich, SE10 0TY



Wyndham Apartments, Greenwich, SE10

Leasehold

Set in the ever popular 'River Gardens' development, this stunning three bedroom, three bathroom, 6th floor flat comes to market offering complete views of the Thames, both up and down stream.

Key Features

- 3 Bedrooms
- 3 Bathrooms
- Allocated parking & storage cage
- 24 Hour concierge
- Stunning views of The River
- On-site leisure facilities
- 6th Floor
- EPC: B

The Property

Boasting over 1,600 square foot of internal living space, and offered to market with no upper-chain, this property is perfect for downsizers and families alike.





Accommodation

The accommodation comprises; a welcoming entrance hallway with doors leading to all rooms. The reception room / kitchen is a generous size at 29' x 25' with impressive views of the Thames from the south-facing balcony. The kitchen has been thoughtfully arranged with an array of eye and base level units and benefits from a large island. The main bedroom is a larger than average double at 14'5 x 13' with a second private balcony and en-suite four-piece bathroom, arranged with toilet, hand basin, shower cubicle and bathtub. The second bedroom is also a large double at 13'5 x 12' with a second en-suite bathroom, laid out with toilet, hand basin and bathtub. The third bedroom is a similar size to the second, and has been laid out as a guest-room / home office by the current owner. Completing the flat, is the family shower room. There is also a large storage cupboard & utility cupboard in the hallway.

This flat comes with the added benefit of an underground, secure parking space and a storage cage. The River Gardens development offers a range of facilities, including 24-hour concierge, residents gym, swimming pool and tennis courts. It is located along the Thames Path, offering easy access to both North Greenwich and the Cutty Sark Stations, as well as local shops, amenities and high street all less than 1 mile from the property.

Outside

This flat comes with the added benefit of an underground, secure parking space and a storage cage. The River Gardens development offers a range of facilities, including 24-hour concierge, residents gym, swimming pool and tennis courts. It is located along the Thames Path, offering easy access to both North Greenwich and the Cutty Sark Stations, as well as local shops, amenities and high street all less than 1 mile from the property.





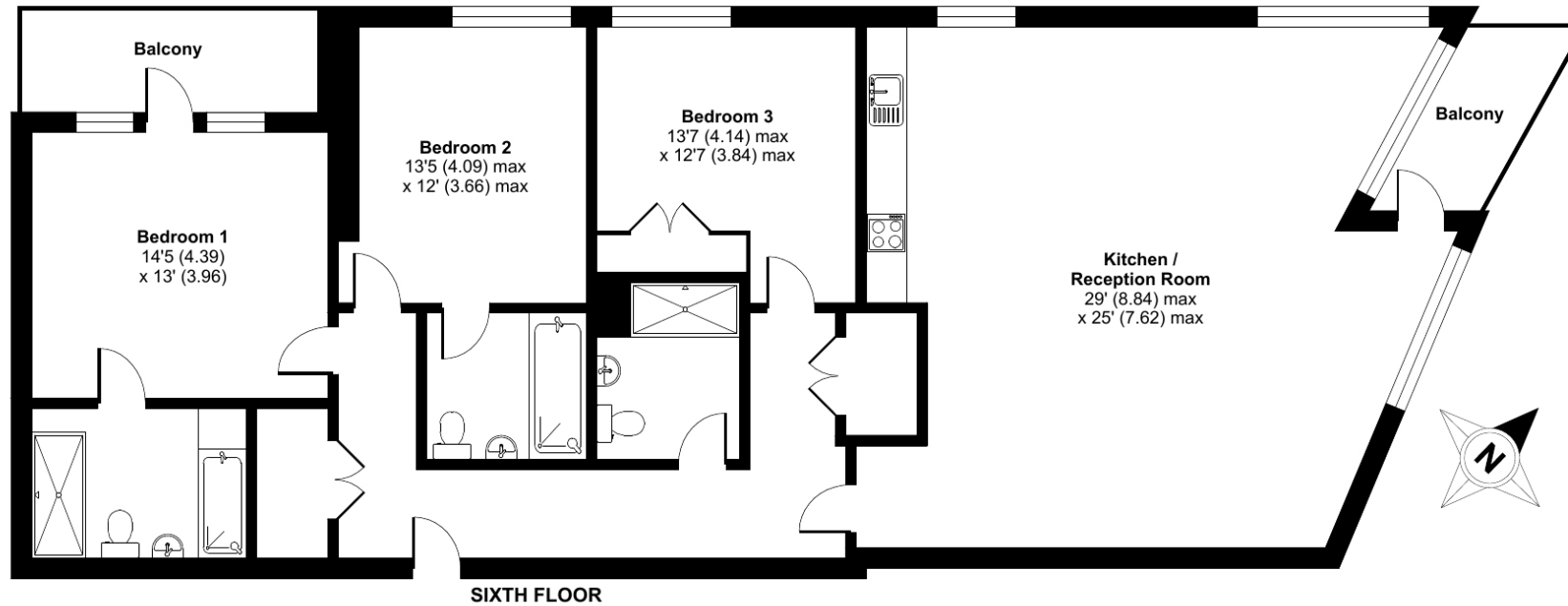




River Gardens Walk, London, SE10

Approximate Area = 1632 sq ft / 151.6 sq m

For identification only - Not to scale



Floor plan produced in accordance with RICS Property Measurement Standards incorporating International Property Measurement Standards (IPMS2 Residential). © nichecom 2023. Produced for JLL Residential. REF: 1061540

22 College Approach, Greenwich, London,
SE10 9HY

Sales, Lettings & Property Management

Tel: 020 8858 9986

residential.jll.co.uk

