



Hazel Lane, Greenwich, London SE10 9FZ



Hazel Lane, Greenwich, London, SE10

Leasehold

Located in Greenwich, is this impressive three bedroom, two bathroom modern apartment situated on the 5th floor of this centrally located Greenwich Square development.

Key Features

- 3 Good sized bedrooms
- 2 Bathrooms
- Wrap around balcony
- 5th Floor modern apartment
- Parking
- Light and spacious
- Close to mainline station
- EPC: B

The spacious accommodation comprises over 1,044 sq ft of living space and offers an open plan kitchen / reception room with a sunny Southerly wrap around balcony. Three good sized bedrooms, master with en-suite bathroom and a separate family bathroom.

The property benefits from lift access and an allocated parking space.

The development is built around a leisure complex in the middle with swimming pool, gym, classes (chargeable membership required) and library.

Only 0.5 miles to Maze Hill mainline station and with bus routes outside the development towards central London and North Greenwich Jubilee line station.





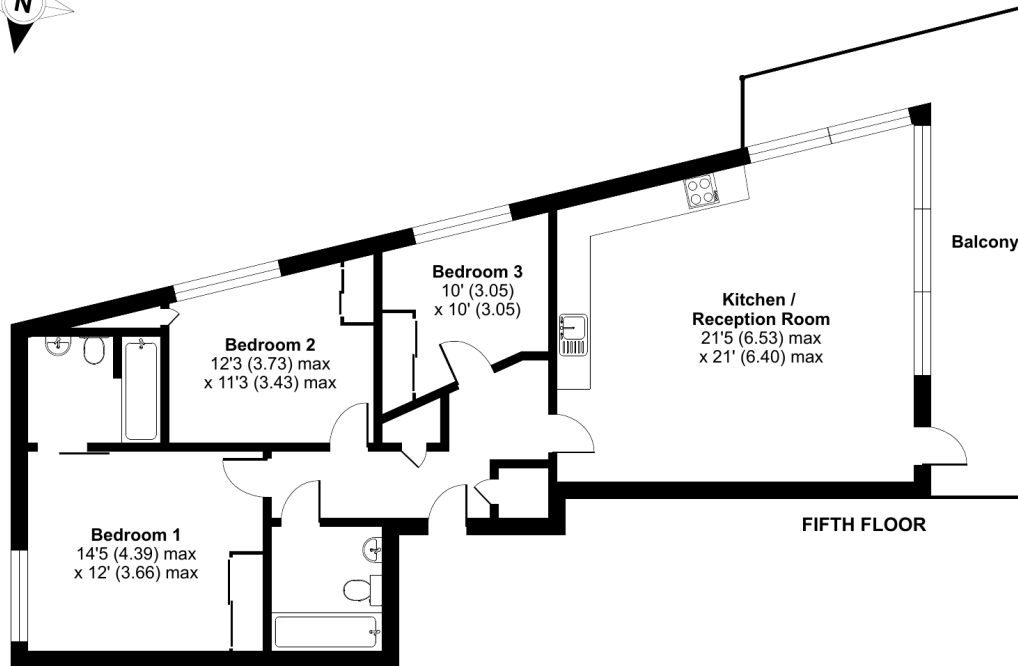




Hazel Lane, London, SE10

Approximate Area = 1044 sq ft / 97 sq m

For identification only - Not to scale



Floor plan produced in accordance with RICS Property Measurement Standards incorporating International Property Measurement Standards (IPMS2 Residential). © nlcocom 2023. Produced for JLL Residential. REF: 1063116

22 College Approach, Greenwich, London,
SE10 9HY

Sales, Lettings & Property Management

Tel: 020 8858 9986

residential.jll.co.uk

