



Hadrian Street, Greenwich, London SE10 9AQ



## Hadrian Street, Greenwich, SE10

Freehold

***A one bedroom Victorian terraced cottage situated in the heart of Greenwich and a short walk from Maze Hill mainline station.***

### Key Features

- 1 Bedroom
- 1 Bathroom
- Victorian terraced cottage
- potential to extend
- Garden
- Popular location
- Close to mainline station
- EPC: C

---

The accommodation comprises large reception room with stairs leading up to the first floor, kitchen area with access to a downstairs WC and rear garden. One double bedroom on the first floor and a bathroom.

The property benefits from the potential to extend and no onward chain.

Located on this popular residential street close to the Thames Path, local shops and convenient transport links

Early viewings are highly recommended.





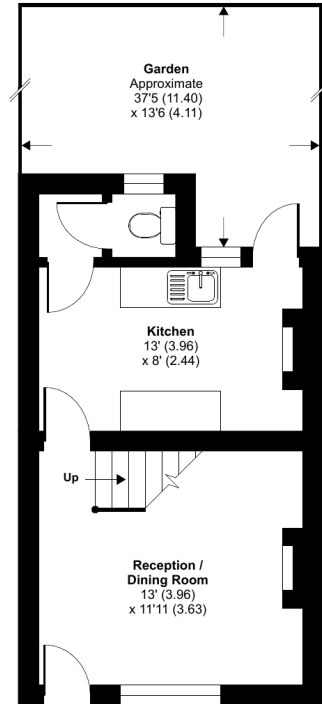




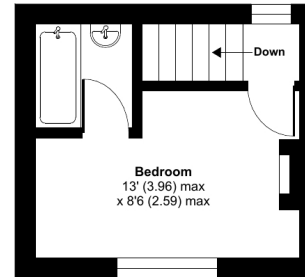
# Hadrian Street, London, SE10

Approximate Area = 452 sq ft / 42 sq m

For identification only - Not to scale



GROUND FLOOR



FIRST FLOOR



Floor plan produced in accordance with RICS Property Measurement Standards incorporating International Property Measurement Standards (IPMS2 Residential). © rnhcom 2023. Produced for JLL Residential. REF: 1062937

22 College Approach, Greenwich, London,  
SE10 9HY

Sales, Lettings & Property Management

Tel: 020 8858 9986

[residential.jll.co.uk](https://residential.jll.co.uk)

