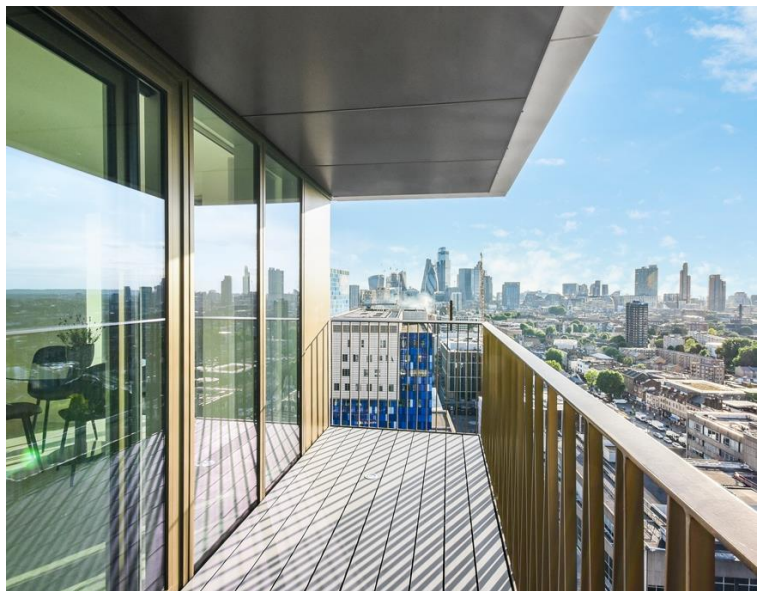
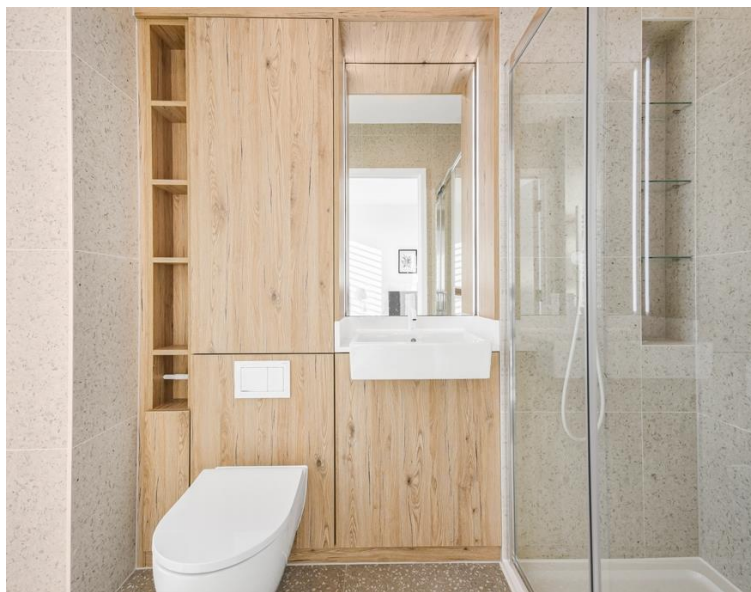
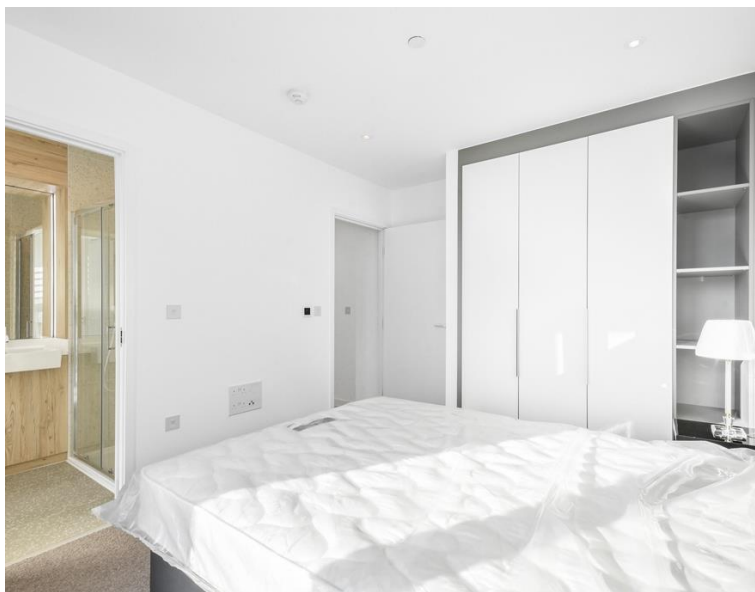


# Tapestry Way, London E1

Price £650 per week - Furnished







## Description

A stunning two bedroom within Jacquard Point, the Silk District, E1.

This luxury apartment is situated on the 19th floor, offers great living space and is offered fully furnished. The apartment comprises an open plan living room and integrated kitchen, separate sleeping area with large fitted wardrobes, bathroom with porcelain finish, tiled flooring throughout and good storage space.

The Silk District is a development from Mount Anvil and offers its residents fantastic amenities which include 24 hour concierge, on site gym, cinema room, rooftop gardens and resident's lounge. The development is within easy reach of the City of London and in the heart of the Whitechapel regeneration area, approximately 0.3 miles from Whitechapel Underground / Crossrail station.

As well as paying the rent, you may also be required to make the following permitted payments. If your tenancy does not qualify as an AST, additional fees may apply. Please visit [jll.co.uk/fees](http://jll.co.uk/fees) for details of fees which may be payable when renting a property.

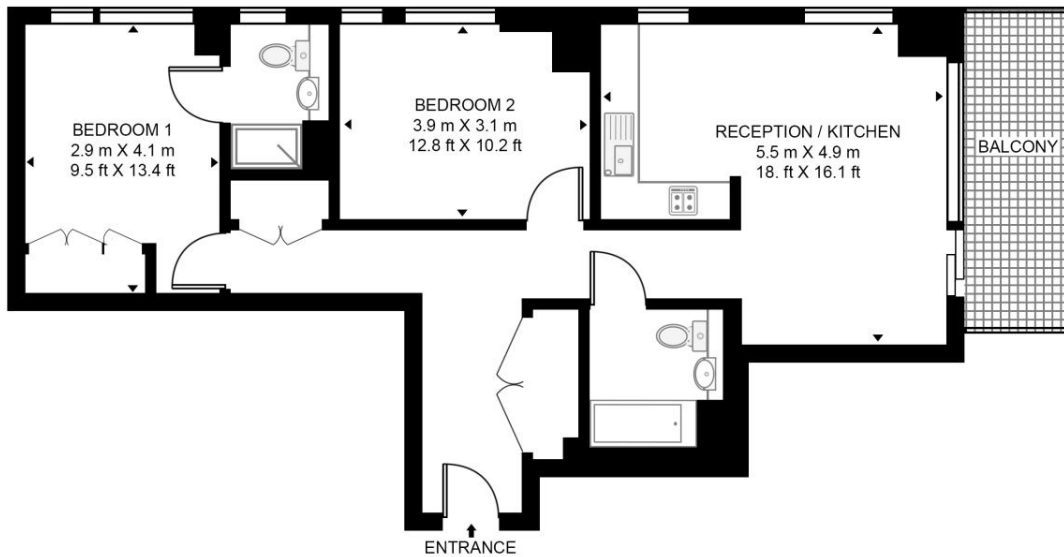
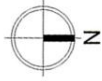
- 2 Bedrooms
- 2 Bathrooms
- 19th Floor
- Open-plan living / dining area
- Communal rooftop gardens
- 24 hour concierge
- On-site leisure facilities including cinema and gym
- 0.3 miles from Whitechapel Station
- Approx. 776 sq ft (72.1 sq m)
- Furnished

# Floorplan

776 sq ft | 72 sq m

## JACQUARD POINT, THE SILK DISTRICT

APPROXIMATE GROSS INTERNAL FLOOR AREA 776 SQ.FT (72.1 SQ.M)



NINETEENTH FLOOR



This floor plan has been defined by the RICS Code of Measurement. This floor plan and all others are for approximate representative purposes only and upon usage is agreed to as such by the client.  
WWW: [hdvirtualart.com](http://hdvirtualart.com) | TEL: 0203.974.1567 | EMAIL: [info@hdvirtualart.com](mailto:info@hdvirtualart.com)

City  
25 Walbrook The Walbrook  
Building,  
London EC4N 8AF  
+4420 7337 4000

*Urban living, your way.*

[jll.co.uk/residential](http://jll.co.uk/residential)

© 2019 Jones Lang LaSalle IP, Inc. All rights reserved. All information contained herein is from sources deemed reliable; however, no representation or warranty is made to the accuracy thereof.

