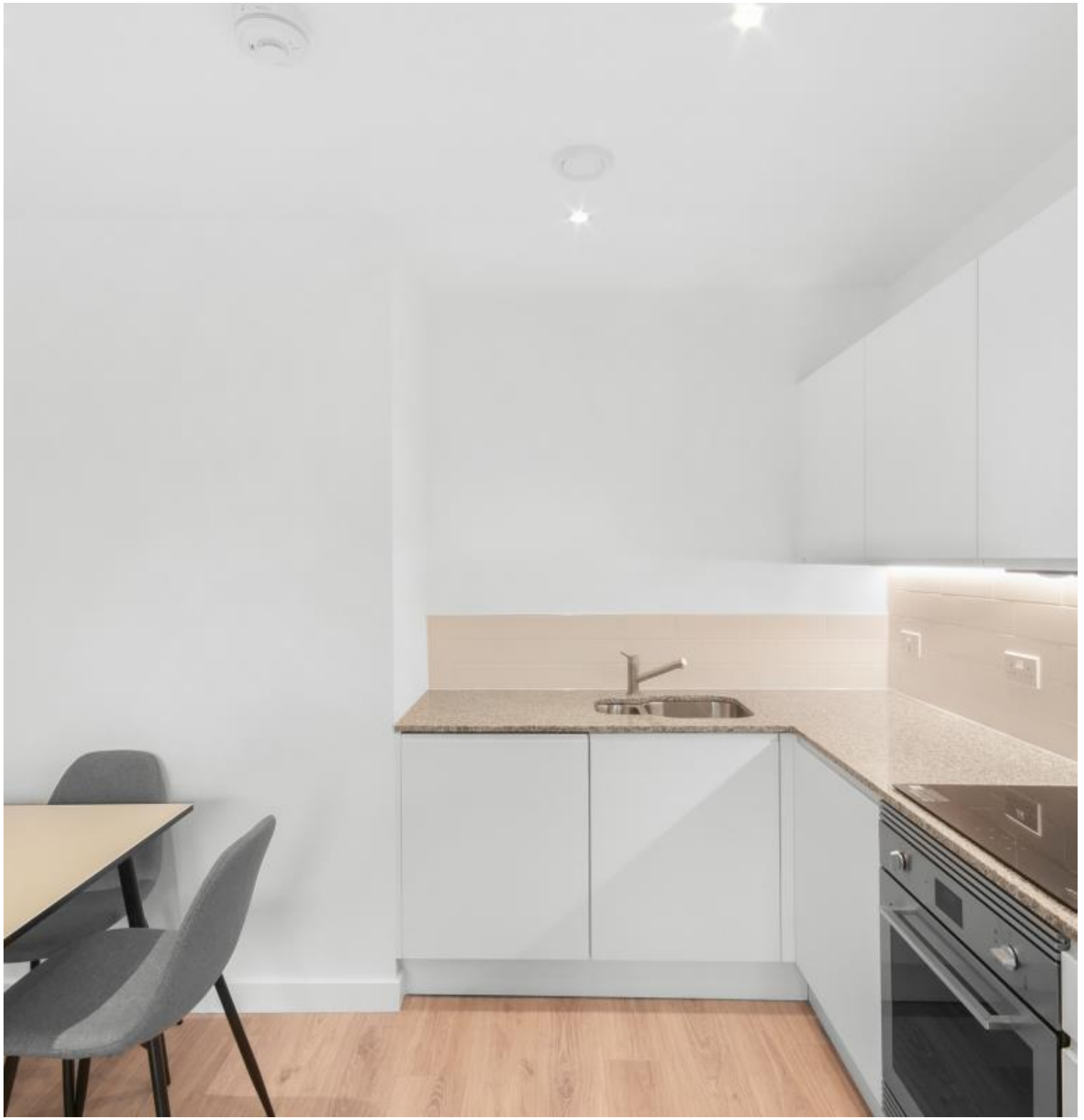


Dockley Road, London SE16

Price £475 per week - Furnished







Description

A brand new 1 bedroom apartment in Dockley Apartments, located in the very heart of Bermondsey, Zone 1's creative hub and set around a communal courtyard and several roof terraces.

Situated on the 2nd floor, this 1 bedroom apartment boasts approximately 539sq ft of living space. Offered fully furnished, the apartment comprises 1 double bedroom with fitted wardrobes, reception with large balcony, open plan fitted kitchen with integrated appliances and contemporary main bathroom. Each apartment is finished to a high specification with underfloor heating and the development benefits from stunning courtyards and three roof top terraces. Bermondsey station is just 0.3 miles away accessing the Jubilee line.

As well as paying the rent, you may also be required to make the following permitted payments. If your tenancy does not qualify as an AST, additional fees may apply. Please visit jll.co.uk/fees for details of fees which may be payable when renting a property.

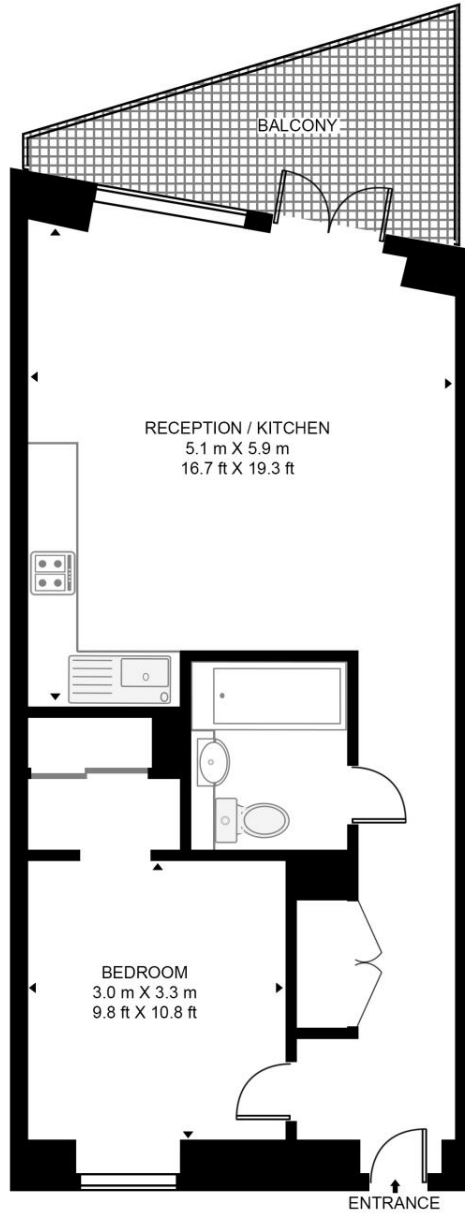
- 1 Bedroom
- 1 Bathroom
- Private balcony
- 2nd Floor
- 0.3 miles from Bermondsey Station
- Approx. 542 sq ft (50.4 sq m)
- Furnished
- EPC: B

Floorplan

542 sq ft | 50 sq m

DOCKLEY APARTMENTS, 5 DOCKLEY ROAD

APPROXIMATE GROSS INTERNAL FLOOR AREA 542 SQ.FT (50.4 SQ.M)



SECOND FLOOR



This floor plan has been defined by the RICS Code of Measurement. This floor plan and all others are for approximate representative purposes only and upon usage is agreed to as such by the client.

WWW: hdvirtualart.com | TEL: 0203.974.1567 | EMAIL: info@hdvirtualart.com

City
25 Walbrook The Walbrook
Building,
London EC4N 8AF
+4420 7337 4000

Urban living, your way.

jll.co.uk/residential

© 2019 Jones Lang LaSalle IP, Inc. All rights reserved. All information contained herein is from sources deemed reliable; however, no representation or warranty is made to the accuracy thereof.

