



Station Street, London E15

Guide price £625,000 Leasehold







Description

New to the market becomes available this perfect example of a 2 double bedroom 2 bathroom apartment within one of Stratford's most desirable developments, Unex Tower E15.

Situated on the eighth floor and approximately 1007sq. ft, this property has been kept to the highest of standards and boasts a sleek and modern open-plan kitchen/living area with integrated appliances, large winter garden which can be accessed from each room, floor-to-ceiling-windows allowing plenty of light, 2 double bedrooms and two bathrooms (including an en-suite). The property also boasts an incredible amount of storage along with very expensive optional extras such as air conditioning, water softener and flooring throughout (standard spec are carpeted in all bedrooms). Residents further benefit from a 24hr concierge service, lift access, secured bicycle storage, residents roof terrace and very popular convenience store on the ground floor.

Unex Tower is ideally located a stones throw from Stratford Station which is now one of London's busiest stations, you will never be far from any location in outer and inner London. Also located conveniently close to the Olympic Park, offering an abundance of cafes, restaurants & shops, world-class sporting facilities and easy access to Westfield shopping centre.

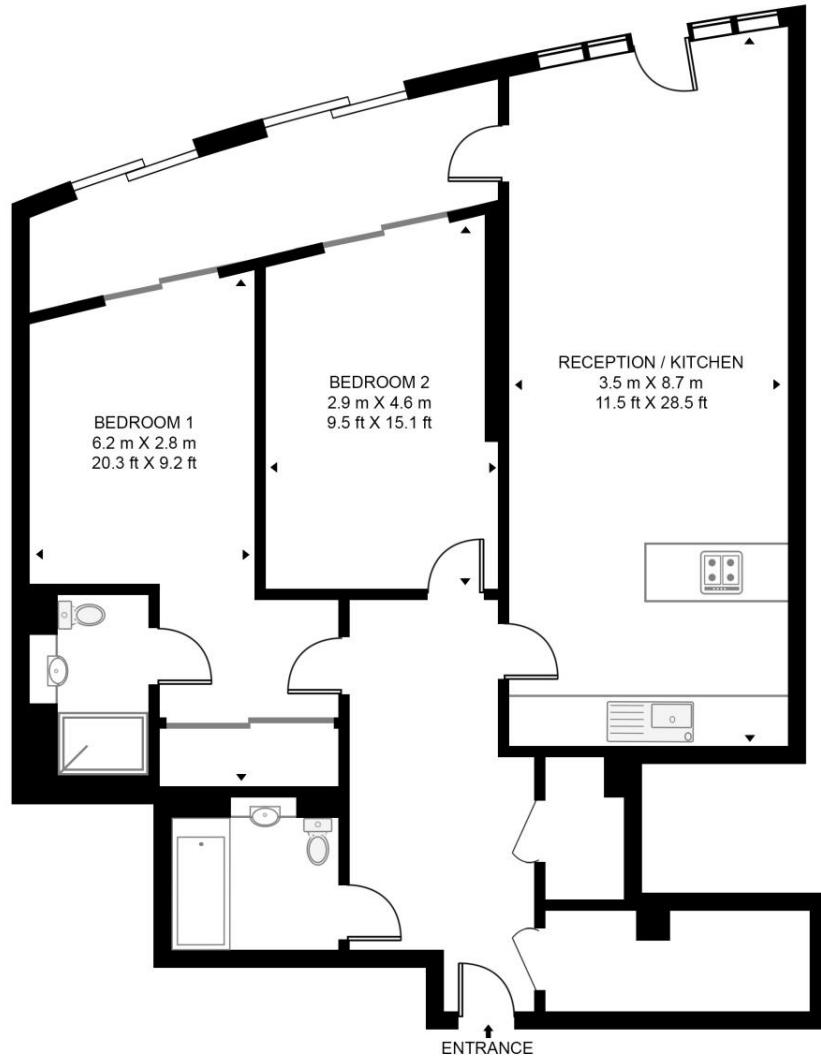
- Two Bedrooms
- Two Bathrooms (One en-suite)
- Air Conditioning
- Water Softener
- Winter Garden
- 24hr Concierge
- Views across the City & Olympic Park
- Residents roof terrace
- Moments from Stratford Station
- Approx. 1007 sq. ft (93.6 sq. m)

Floorplan

1,007 sq ft | 94 sq m

UNEX TOWER

APPROXIMATE GROSS INTERNAL FLOOR AREA 1007 SQ.FT (93.6 SQ.M)



EIGHTH FLOOR



This floor plan has been defined by the RICS Code of Measurement. This floor plan and all others are for approximate representative purposes only and upon usage is agreed to as such by the client.
WWW: hdvirtualart.com | TEL: 0203.974.1567 | EMAIL: info@hdvirtualart.com

Stratford
5 Station Street,
London E15 1DA
+4420 3147 1500
salesstratford@eu.jll.com

Urban living, your way.

jll.co.uk/residential

© 2019 Jones Lang LaSalle IP, Inc. All rights reserved. All information contained herein is from sources deemed reliable; however, no representation or warranty is made to the accuracy thereof.

