



Elystan Street, London SW3

Asking price £2,500,000 Leasehold







Description

Situated on the fifth and sixth floor of this sought-after development in the heart of Chelsea, this light and bright duplex penthouse comprises three spacious double bedrooms, three bathrooms and further benefits from a sunny balcony off the reception room. Beautifully finished throughout and ready for occupation.

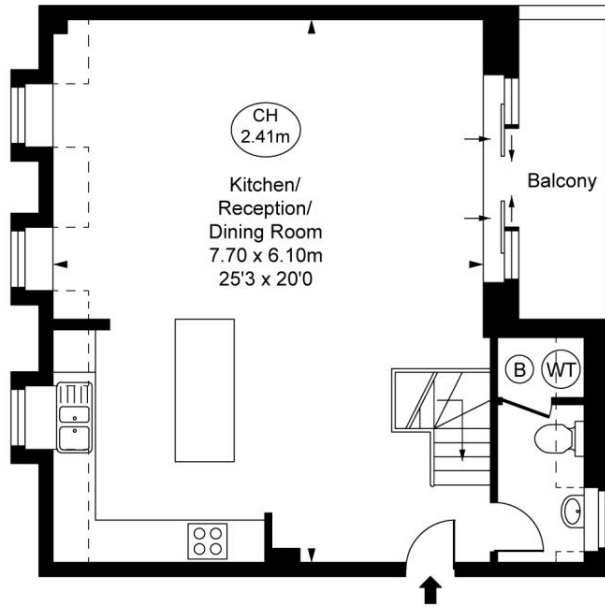
Crown Lodge is located on Elystan Place and offers residents 24-hour concierge and security, beautifully landscaped gardens and a newly refurbished Residents Leisure space with a swimming pool, jacuzzi and a fully fitted gym.

Perfectly situated to an array of local shops and restaurants at Chelsea Green and Kings Road, the development is also conveniently located within a short walk of the District and Circle Lines at South Kensington station and Sloane Square station.

- 3 Bedrooms
- 3 Bathrooms + WC
- Beautiful penthouse
- Heart of Chelsea
- Approx. 1,430 sq. ft. (131.9 sq. m.)
- EPC: D

Floorplan

1,430 sq ft | 133 sq m

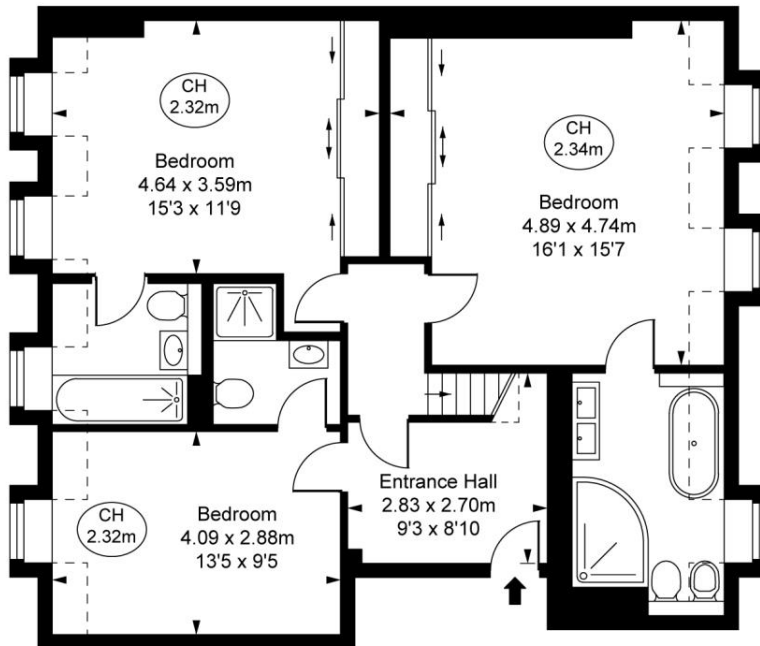


Crown Lodge,
Elystan Street, SW3
Approximate Gross Internal Area
131.88 sq m / 1,420 sq ft

(Including restricted height
under 1.5m [- - - -])
(CH = Ceiling Heights)



Sixth Floor
Approximate Gross Internal Area
52.78 sq m / 568 sq ft



Fifth Floor
Approximate Gross Internal Area
79.11 sq m / 852 sq ft

This plan is not to scale. It is for guidance and not for valuation purposes.
All measurements and areas are approximate only, and have been prepared in accordance with the current edition of the RICS Code of Measuring Practice.
© Fulham Performance

Knightsbridge
Wood Wharf,
London E14 5GX
+4420 7306 1600
SalesKnightsbridge@eu.jll.co

Urban living, your way.

jll.co.uk/residential

© 2019 Jones Lang LaSalle IP, Inc. All rights reserved. All information contained herein is from sources deemed reliable; however, no representation or warranty is made to the accuracy thereof.

