



Elvaston Place, London SW7

Price £1,200 per week - Furnished





Description

A lovely first and second floor duplex (with lift) in this smart period building located close to all the amenities of Gloucester Road. The property consists of two double bedrooms, one single bedroom/study, one bathroom, two shower rooms (en suite), a large reception room with dining area and a fully fitted, eat-in kitchen. The flat is presented in excellent order and offers high ceilings, wooden floors, plenty of light and a wonderful terrace.

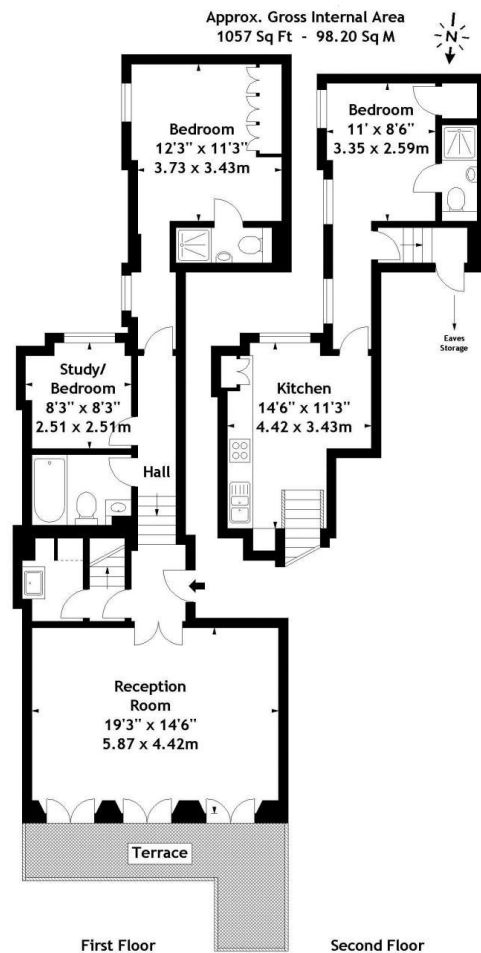
As well as paying the rent, you may also be required to make some additional permitted payments. If your tenancy does not qualify as an AST, additional fees may apply. Please visit jll.co.uk/fees for details of fees which may be payable when renting a property.



- 3 Bedrooms
- 1 Bathroom
- 2 Shower rooms (en suite)
- Reception room
- Eat-in kitchen
- First & second floor
- Terrace
- Lift
- Approx. 1,057 sq ft (98 sq m)
- Furnished

Floorplan

1,057 sq ft | 98 sq m



Measured in accordance with RICS guidelines. Every attempt is made to ensure accuracy, however all measurements are approximate. This floor plan is for illustrative purposes only and is not to scale.

Knightsbridge
Wood Wharf,
London E14 5GX
+4420 7306 1600
lettingsknightsbridge@eu.jll.co

Urban living, your way.

jll.co.uk/residential

© 2019 Jones Lang LaSalle IP, Inc. All rights reserved. All information contained herein is from sources deemed reliable; however, no representation or warranty is made to the accuracy thereof.

