



Cam Road, London E15

Guide price £450,000 Leasehold







Description

Opportunity to purchase an 8th floor 2 double bedroom with private underground parking within one of Stratford's popular developments, Burford Wharf Apartments, E15

Comprising approximately 824 square feet, the property boasts a large open-plan kitchen/living area leading to a private balcony, modern kitchen with integrated appliances, 2 double bedrooms, large and ultra modern family bathroom and ample storage throughout.

The development is located just a short walk from Stratford International DLR and Stratford Underground Station where direct transport links servicing The City, Canary Wharf and the West End are readily accessible. Residents further benefit from a concierge service, private balcony with views across London, and is close to local amenities.

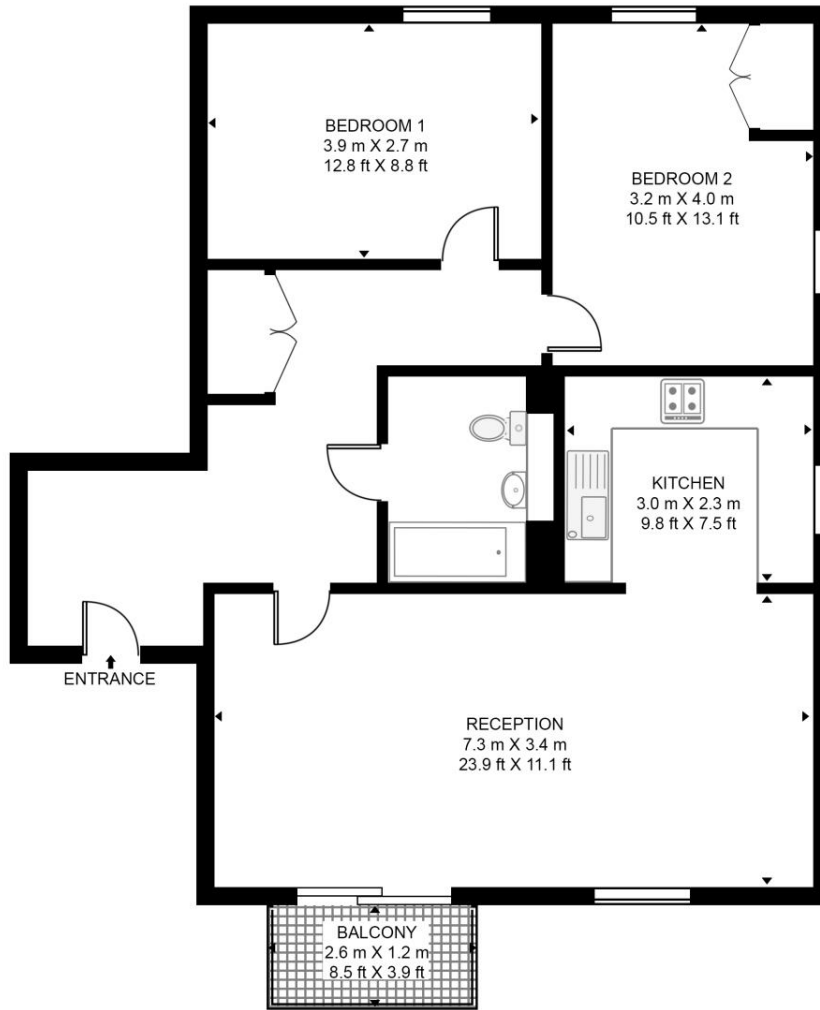
- 2 Double bedrooms
- 8th Floor
- Concierge service
- Private underground parking space
- Private balcony
- Panoramic views across London
- Short walk to Stratford International DLR Station
- Short walk to Stratford Underground Station
- Approx. 824 sq ft (76.6 sq m)
- Tenure: Leasehold

Floorplan

824 sq ft | 77 sq m

BURFORD WHARF

APPROXIMATE GROSS INTERNAL FLOOR AREA 824 SQ.FT (76.6 SQ.M)



EIGHTH FLOOR



This floor plan has been defined by the RICS Code of Measurement. This floor plan and all others are for approximate representative purposes only and upon usage is agreed to as such by the client.
WWW: hdvirtualart.com | TEL: 0203.974.1567 | EMAIL: info@hdvirtualart.com

Stratford
5 Station Street,
London E15 1DA
+4420 3147 1500
salesstratford@eu.jll.com

Urban living, your way.

jll.co.uk/residential

© 2019 Jones Lang LaSalle IP, Inc. All rights reserved. All information contained herein is from sources deemed reliable; however, no representation or warranty is made to the accuracy thereof.

