

# Ward Road, London E15

Asking price £450,000 Leasehold







## Description

JLL are pleased to offer this two bedroom two bathroom apartment with private underground parking located on the 6th floor within the popular development, Velocity Building E15. Velocity Building is ideally located on Stratford High Street where you are just a 0.3 mile walk from Stratford Station, offering easy access to the Olympic Park and Westfield Shopping Centre.

This 6th floor modern and spacious apartment benefits from two bedrooms, master with en-suite bathroom, fully fitted kitchen with integrated appliances, modern bathroom, and an ultra modern living/dining area leading onto private balcony.

Stratford is a key London transport hub, with London Underground (6 minutes walk), London Overground, DLR, buses, regional rail services and international travel connection from Stratford International Station.

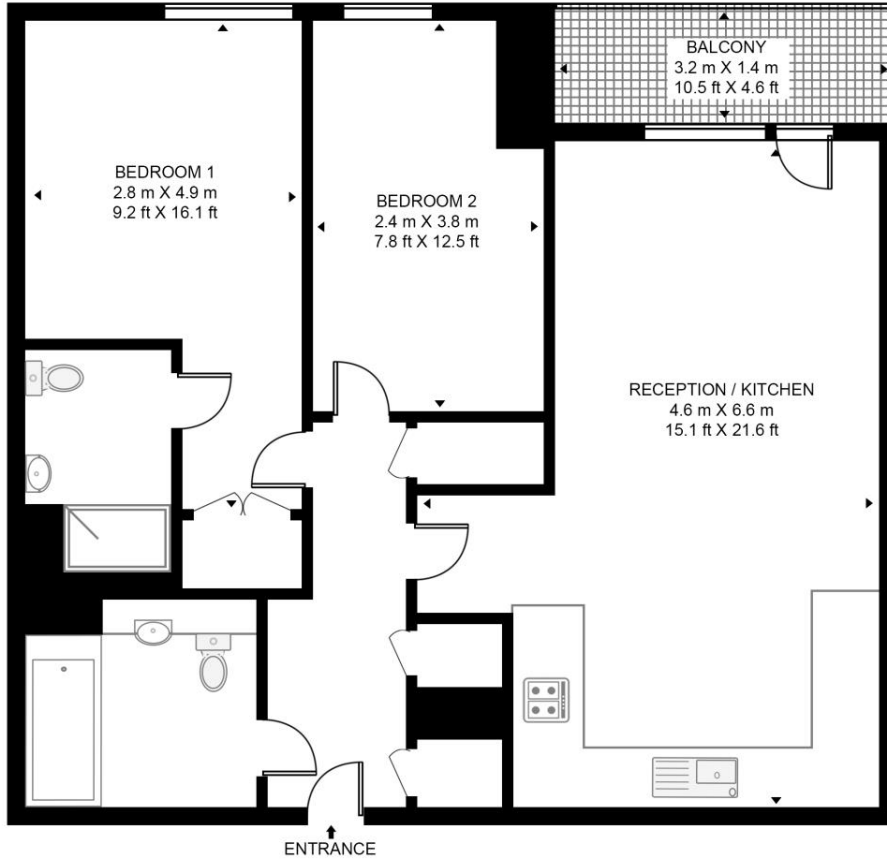
- Two Bedrooms
- Two bathrooms (one en-suite)
- Secure development
- Balcony
- 6th Floor
- Underground parking
- Approx 668 sq. ft (62.1 sq. m)
- 0.3 miles from Stratford station (Jubilee, Central, DLR & Elizabeth Line)
- EPC Rating B

# Floorplan

668 sq ft | 62 sq m

## VELOCITY BUILDING

APPROXIMATE GROSS INTERNAL FLOOR AREA 668 SQ.FT (62.1 SQ.M)



SIXTH FLOOR



This floor plan has been defined by the RICS Code of Measurement. This floor plan and all others are for approximate representative purposes only and upon usage is agreed to as such by the client.  
WWW: [hdvirtualart.com](http://hdvirtualart.com) | TEL: 0203.974.1567 | EMAIL: [info@hdvirtualart.com](mailto:info@hdvirtualart.com)

Stratford  
5 Station Street,  
London E15 1DA  
+4420 3147 1500  
[salesstratford@eu.jll.com](mailto:salesstratford@eu.jll.com)

*Urban living, your way.*

[jll.co.uk/residential](http://jll.co.uk/residential)

© 2019 Jones Lang LaSalle IP, Inc. All rights reserved. All information contained herein is from sources deemed reliable; however, no representation or warranty is made to the accuracy thereof.

