



Camley Street, London N1C

Price £735 per week - Furnished







Description

A stunning 2 bedroom apartment in the luxury Onyx development, by Taylor Wimpey.

With approximately 922 sq ft of living space, this spacious 2 bedroom apartment is offered fully furnished and situated on the 6th floor. The apartment comprises 2 double bedrooms each with large fitted wardrobes, 2 contemporary bathrooms, large south facing winter garden, fully fitted kitchen with Siemens appliances and wood flooring throughout.

This luxury development benefits from a 9th floor communal roof terrace and 24 hour concierge. Onyx is situated in the vibrant hub of Kings Cross, 0.4 miles from Granary Square and 0.5 miles from Kings Cross Station, Zone 1.

We understand that cooling / heating is delivered via a communal system for which separate charges apply.

As well as paying the rent, you may also be required to make some additional permitted payments. If your tenancy does not qualify as an AST, additional fees may apply. Please visit jll.co.uk/fees for details of fees which may be payable when renting a property.

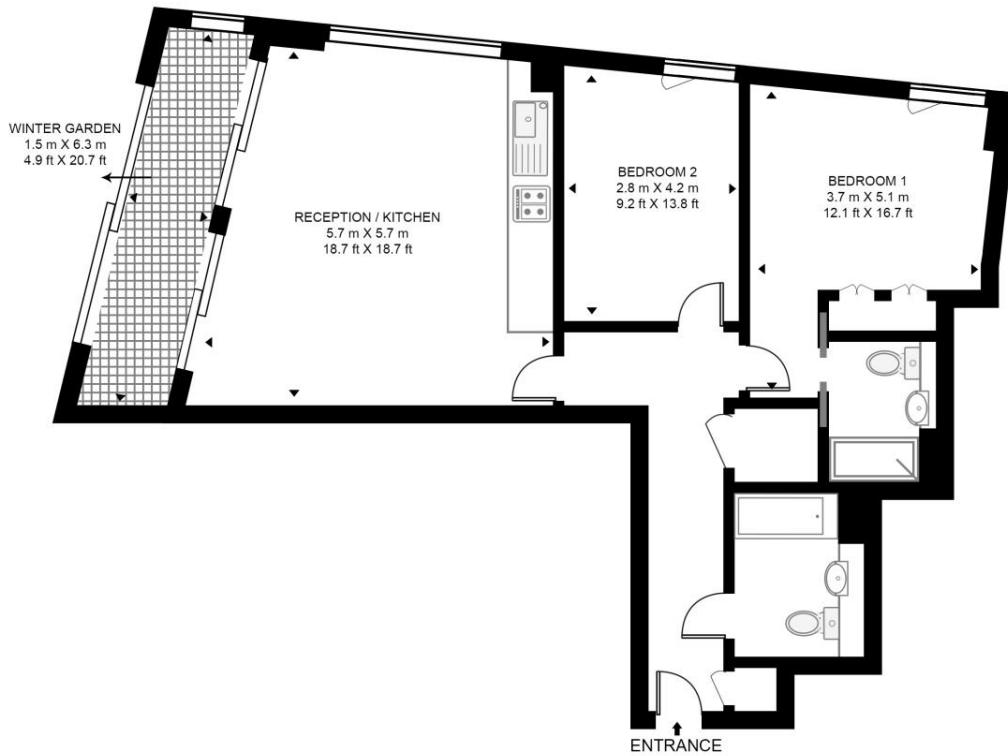
- 2 Bedrooms
- 2 Bathrooms
- 6th floor
- Large south-facing Winter Garden
- Communal Roof Terrace
- 24 hour concierge
- 0.5 miles from Kings Cross Station
- Approx. 960 sq ft (89 sq m)
- EPC: B
- Leasehold

Floorplan

960 sq ft | 89 sq m

ONYX APARTMENTS, 98 CAMLEY STREET

APPROXIMATE GROSS INTERNAL FLOOR AREA 954 SQ.FT (88.6 SQ.M)



SIXTH FLOOR



This floor plan has been defined by the RICS Code of Measurement. This floor plan and all others are for approximate representative purposes only and upon usage is agreed to as such by the client.
WWW: hdvirtualart.com | TEL: 0203.974.1567 | EMAIL: info@hdvirtualart.com

City
25 Walbrook The Walbrook
Building,
London EC4N 8AF
+4420 7337 4000

Urban living, your way.

jll.co.uk/residential

© 2019 Jones Lang LaSalle IP, Inc. All rights reserved. All information contained herein is from sources deemed reliable; however, no representation or warranty is made to the accuracy thereof.

