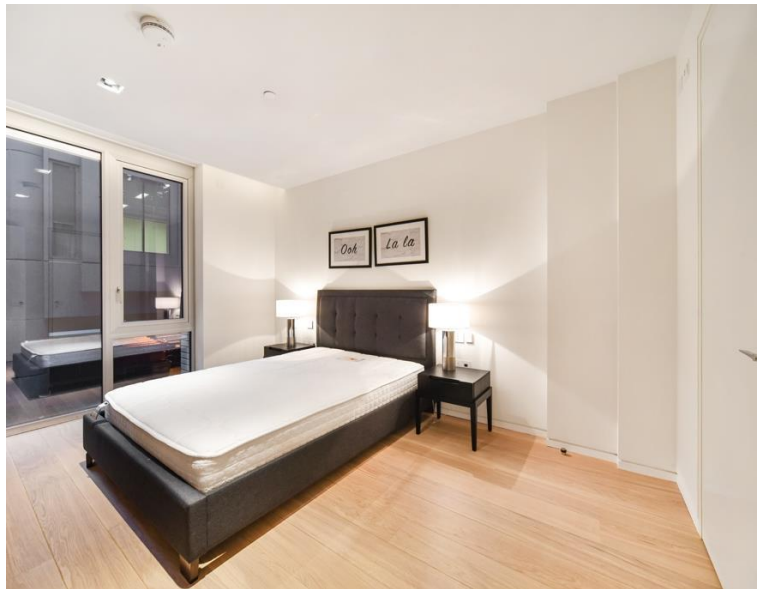




24 Bartholomew Close, London EC1A
Price £660 per week - Furnished







Description

A contemporary 1 bedroom apartment, in Vicary House, Barts Square

This stunning 1 bedroom apartment is offered fully furnished and comprises large double bedroom with fitted wardrobes, reception / dining area with excellent storage space, fully fitted kitchen, contemporary shower room and wood flooring.

Barts Square is situated in the heart of the City, next to St Bartholomew's Hospital, Smithfield Market and the Museum of London. The closest stations are Barbican (0.2 miles), St Pauls (0.3 miles), Farringdon (0.4 miles) and Moorgate (0.6 miles), all located in Zone 1.

We understand that cooling / heating is delivered via a communal system for which separate charges apply.

As well as paying the rent, you may also be required to make some additional permitted payments. If your tenancy does not qualify as an AST, additional fees may apply. Please visit jll.co.uk/fees for details of fees which may be payable when renting a property.

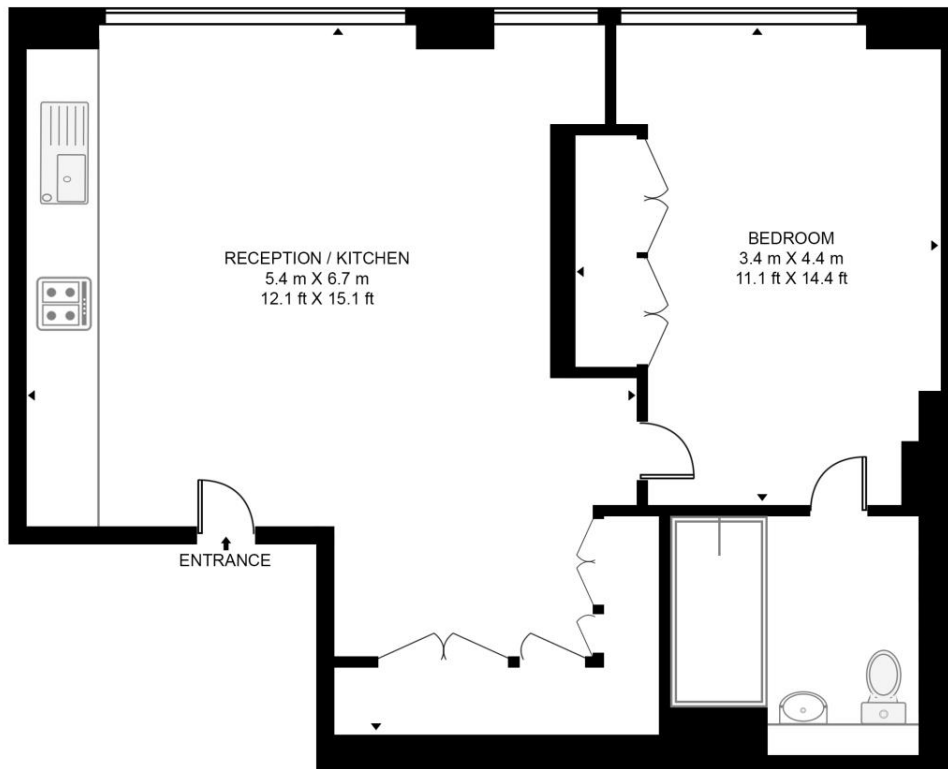
- 1 Bedroom
- 1 Bathroom
- 1st Floor
- Wood flooring
- Excellent storage space
- Fully fitted kitchen
- 0.2 miles from Barbican Station
- Approx. 537 sq ft (49.9 sq m)
- Furnished
- EPC: B

Floorplan

537 sq ft | 50 sq m

VICARY HOUSE, BARTSSQUARE

APPROXIMATE GROSS INTERNAL FLOOR AREA 537 SQ.FT (49.9 SQ.M)



FIRST FLOOR

HDVA

This floor plan has been defined by the RICS Code of Measurement. This floor plan and all others are for approximate representative purposes only and upon usage is agreed to as such by the client.

WWW: hdvirtualart.com | TEL: 0203.974.1567 | EMAIL: info@hdvirtualart.com

City
25 Walbrook The Walbrook
Building,
London EC4N 8AF
+4420 7337 4000

Urban living, your way.

jll.co.uk/residential

© 2019 Jones Lang LaSalle IP, Inc. All rights reserved. All information contained herein is from sources deemed reliable; however, no representation or warranty is made to the accuracy thereof.

