

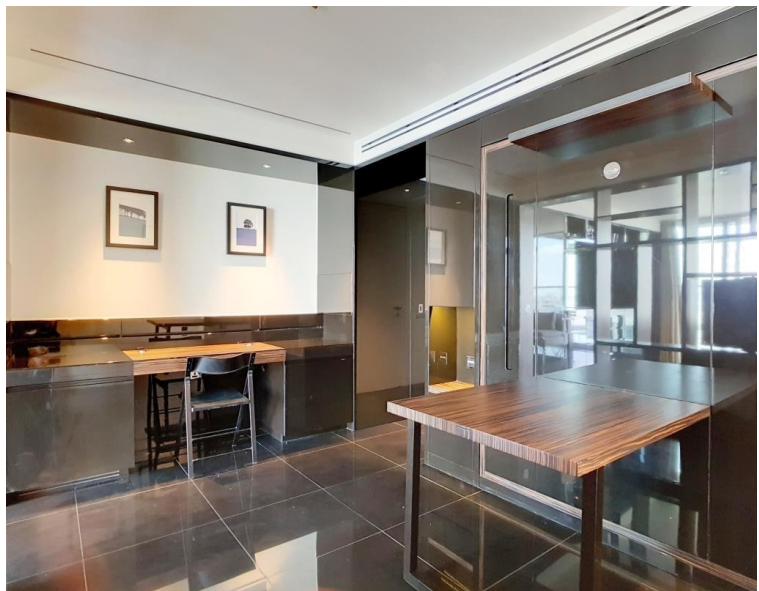
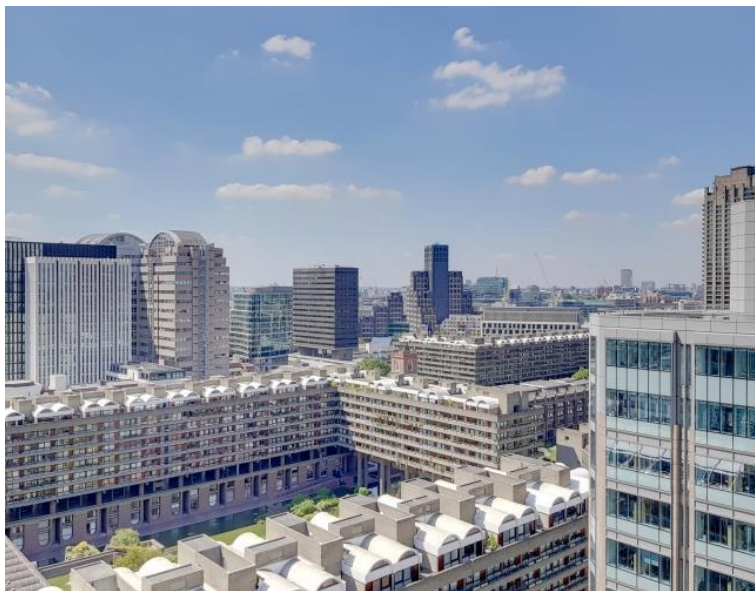


## Moor Lane, London EC2Y

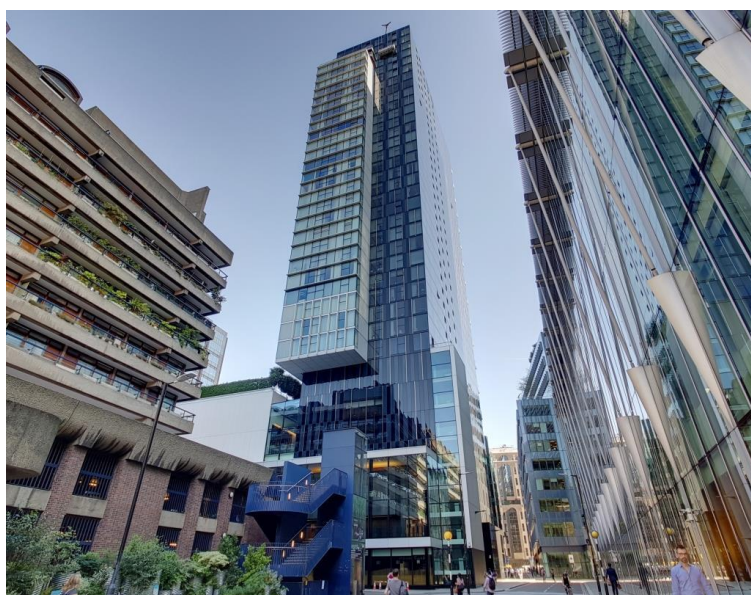
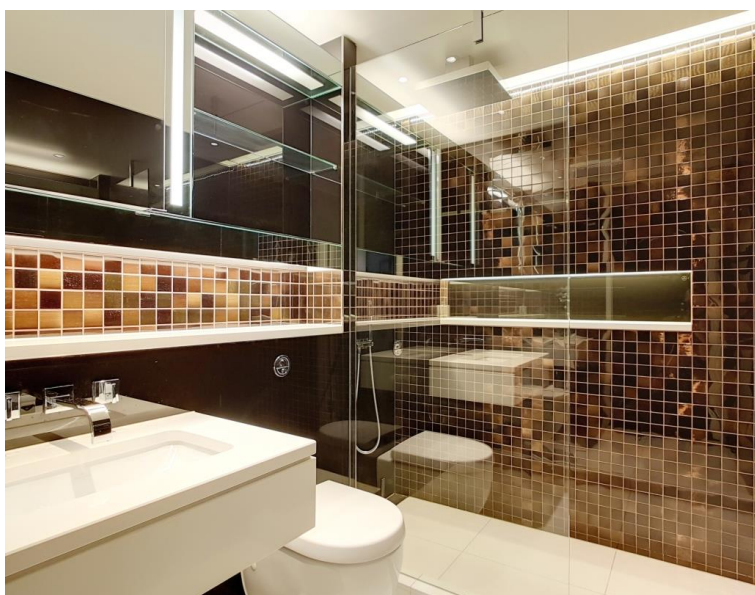
Price £595 per week - Furnished











## Description

A stunning West facing Galley suite within The Heron, EC2

This luxury apartment offers a well sized reception area with West facing balcony, partitioned sleeping area with a desk / working space, open plan kitchen with Miele appliances, dark Porcelain flooring throughout and luxury shower room. The property has a high specification with comfort cooling and central control panel. Offered fully furnished, and well designed to utilise all available space and maximise storage.

The development is located in the heart of the City of London and is within easy reach of stations such as Bank (0.5 miles) and Moorgate (0.2 miles). The Heron benefits from an on-site gym, exclusive resident's club and 24 hour concierge. Parking not included.

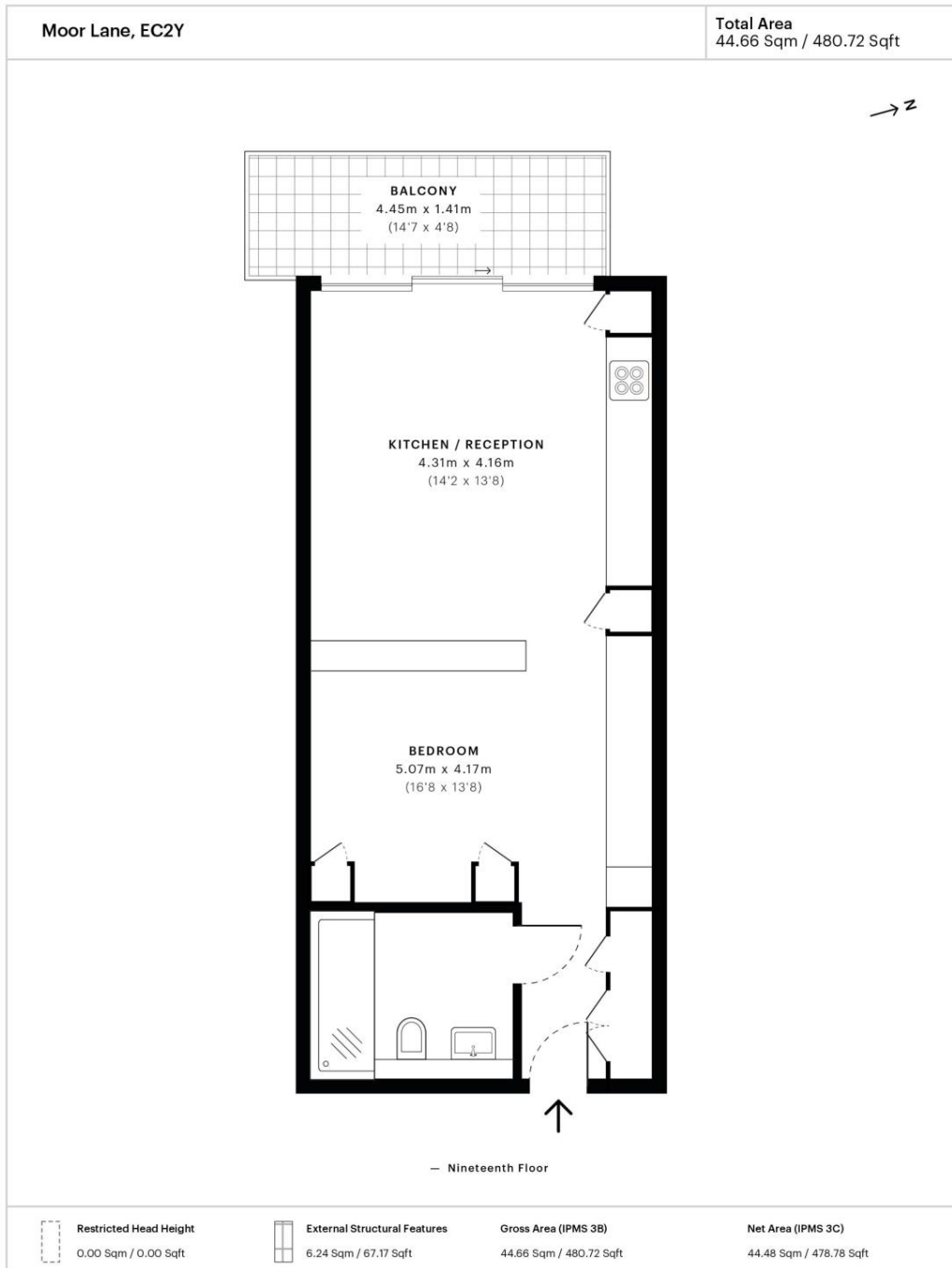
We understand that cooling / heating is delivered via a communal system for which separate charges apply.

As well as paying the rent, you may also be required to make some additional permitted payments. If your tenancy does not qualify as an AST, additional fees may apply. Please visit [jll.co.uk/fees](http://jll.co.uk/fees) for details of fees which may be payable when renting a property.

- Studio
- 1 Bathroom
- Balcony
- Fully fitted kitchen with Miele appliances
- 24 hour concierge
- 0.2 mile from Moorgate Station
- Approx. 481 sq ft (44.7 sq m)
- Furnished
- EPC: C

# Floorplan

481 sq ft | 45 sq m



Spec floor plan captured for JLL, City Office on 03/08/2018 using 108,896,982 laser scan points, accurate to +/- 3cm. Produced in accordance with Royal Institution of Chartered Surveyors Property Measurement Standards, incorporating International Property Measurement Standard (IPMS). If you intend to rely on any measurement in a transaction you should perform your own checks. Plot/Gardens illustrative only and excluded from all area calculations. SpecID: 5b630ad6613e220c47d2e12a

**Restricted Head Height** = Limited use area under 1.5m. **External Structural Features** = Balconies, terraces or verandas or similar. **IPMS 3B** = gross internal area measured from the internal faces of external walls, including walls/obstructions and External Structural Features, excluding stairwell area above/below the ground floor. **IPMS 3C** = net area of IPMS 3B excluding Internal walls/obstructions and stairwell area above/below the ground floor. **Total Internal Area** = IPMS 3B gross area + stairwell area above/below ground floor of 0.00 Sqm / 0.00 Sqft.



City  
25 Walbrook The Walbrook  
Building,  
London EC4N 8AF  
+4420 7337 4000

*Urban living, your way.*

[jll.co.uk/residential](http://jll.co.uk/residential)

© 2019 Jones Lang LaSalle IP, Inc. All rights reserved. All information contained herein is from sources deemed reliable; however, no representation or warranty is made to the accuracy thereof.

